

Tú verður tað, tú etur
- tað verður laksurin eisini!

Rúni Weihe 23.09.2011

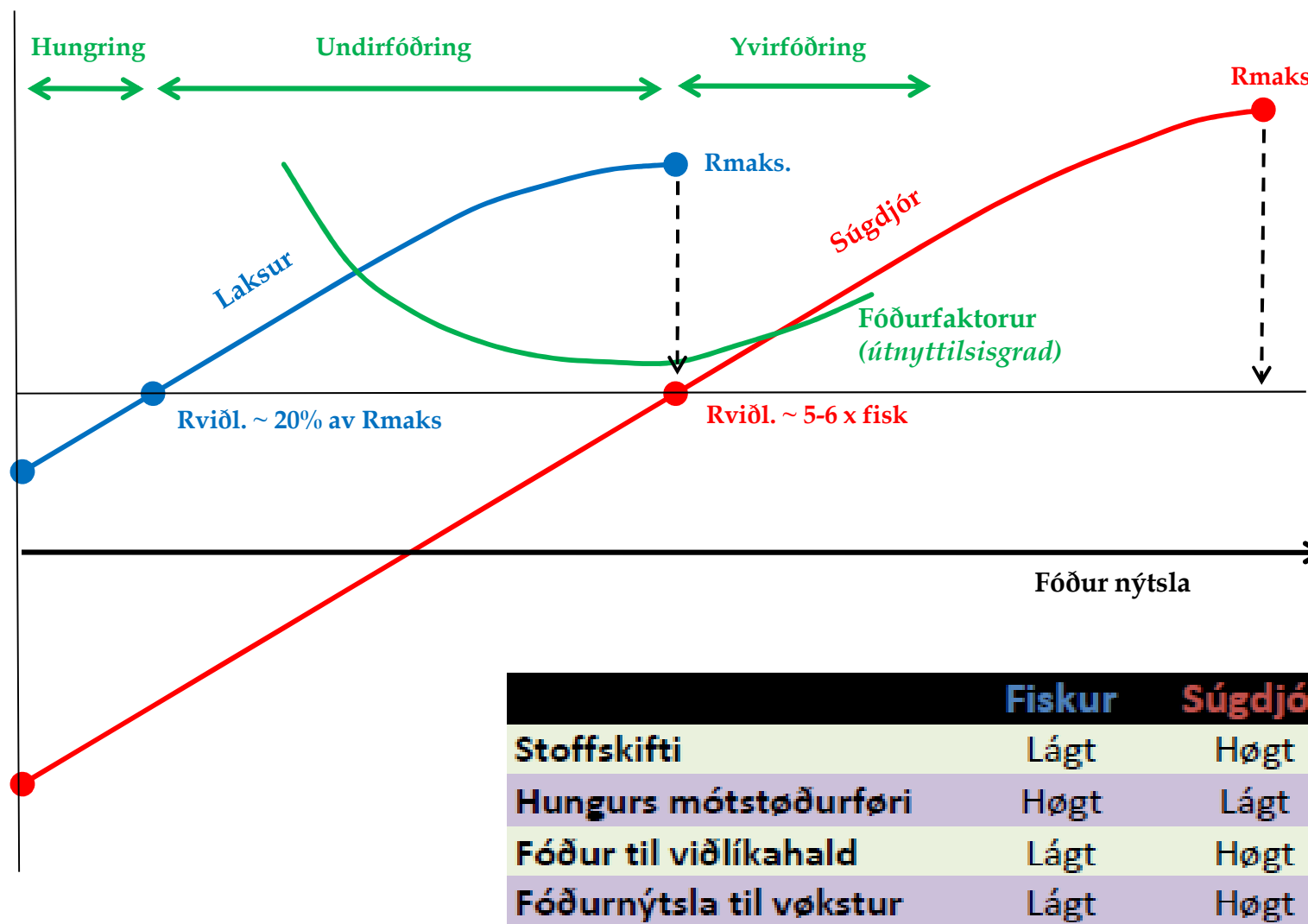
Skrá

Hví ala fisk

Um fóður og fóðursamanseting

Føðslujavnvágin ávirkar úrslitini

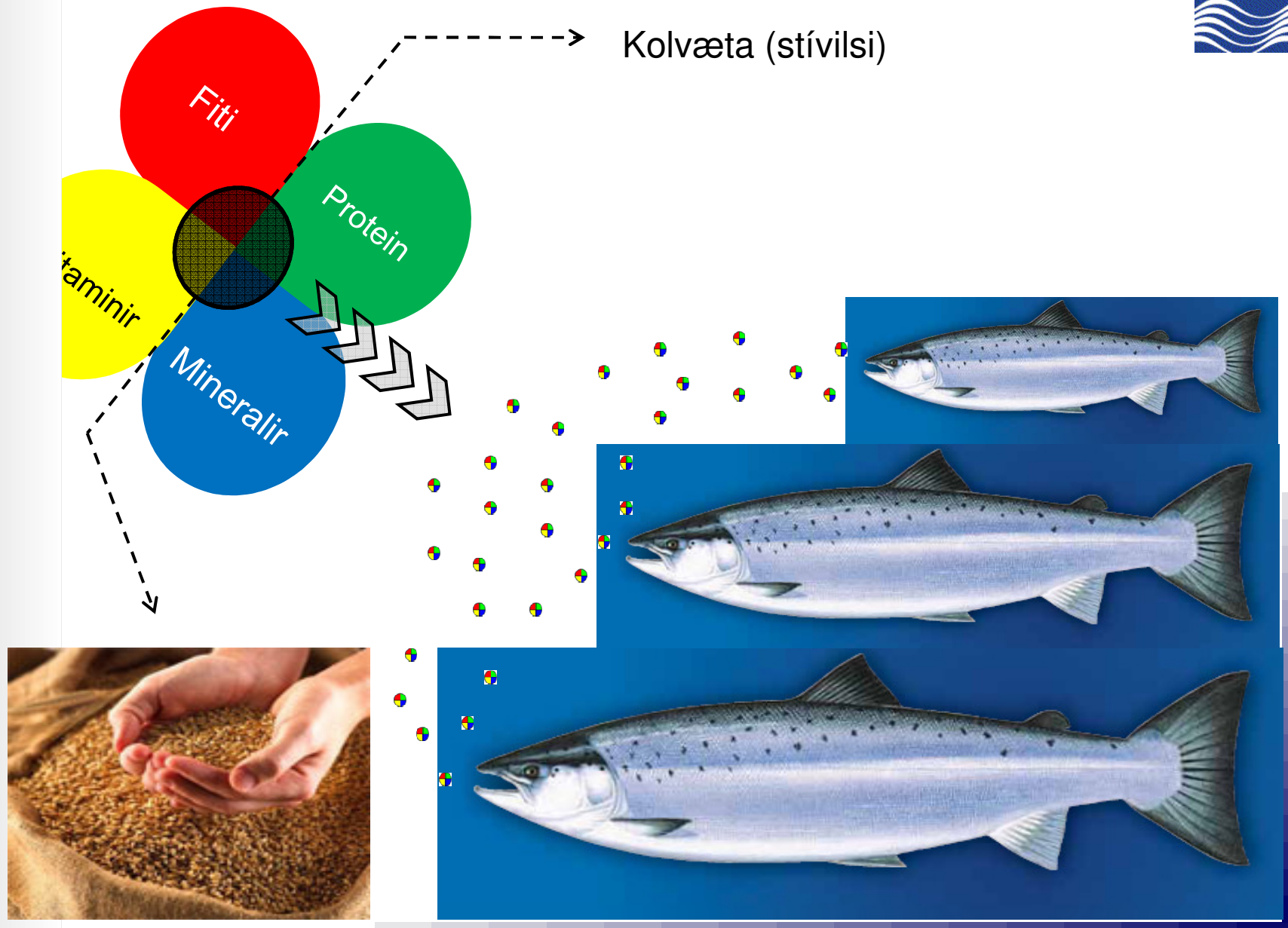
Hví ala laks?



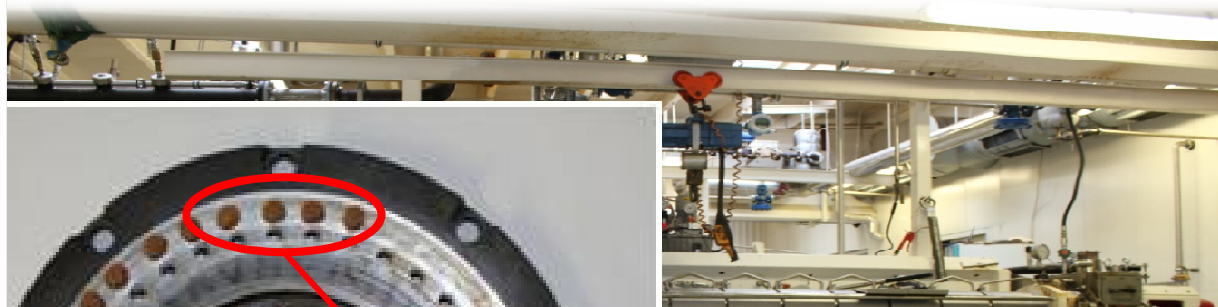


100 kg av fóðri gevur:

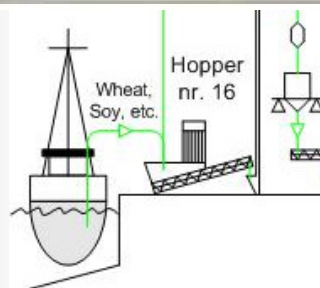
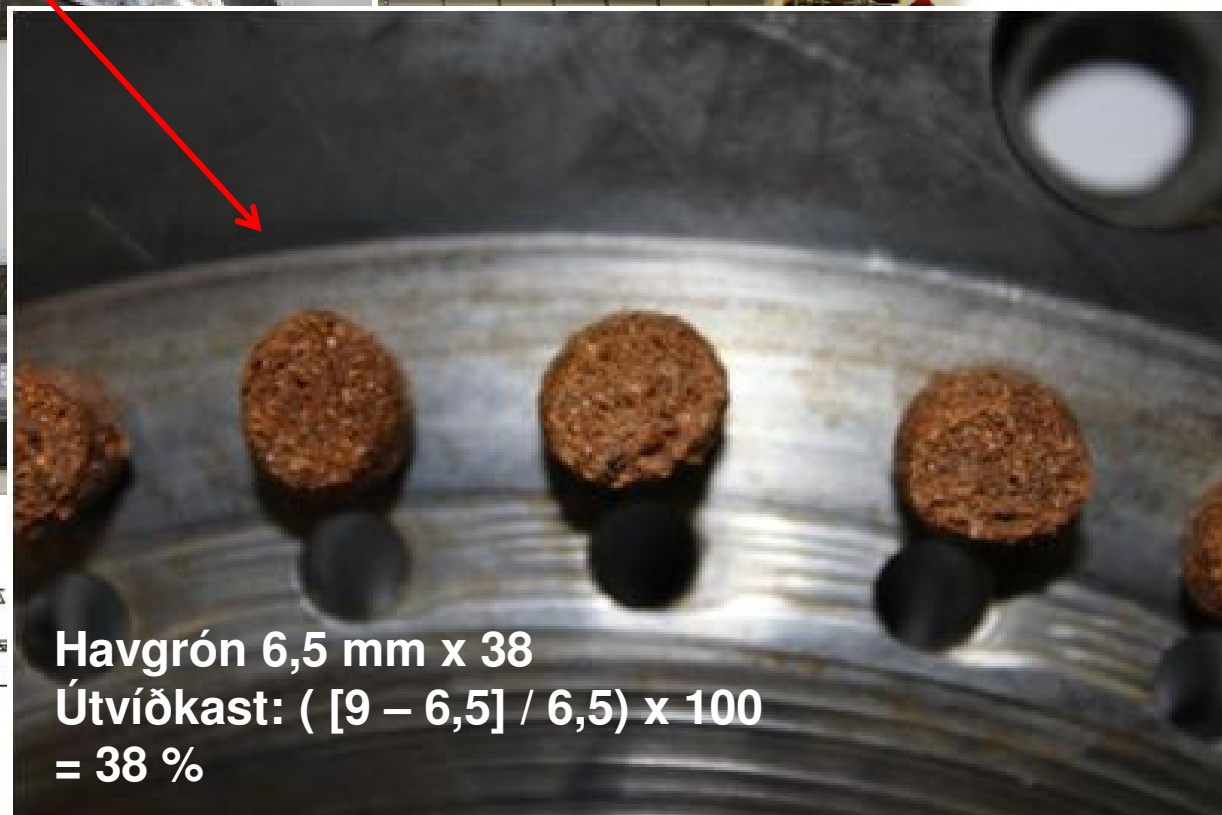
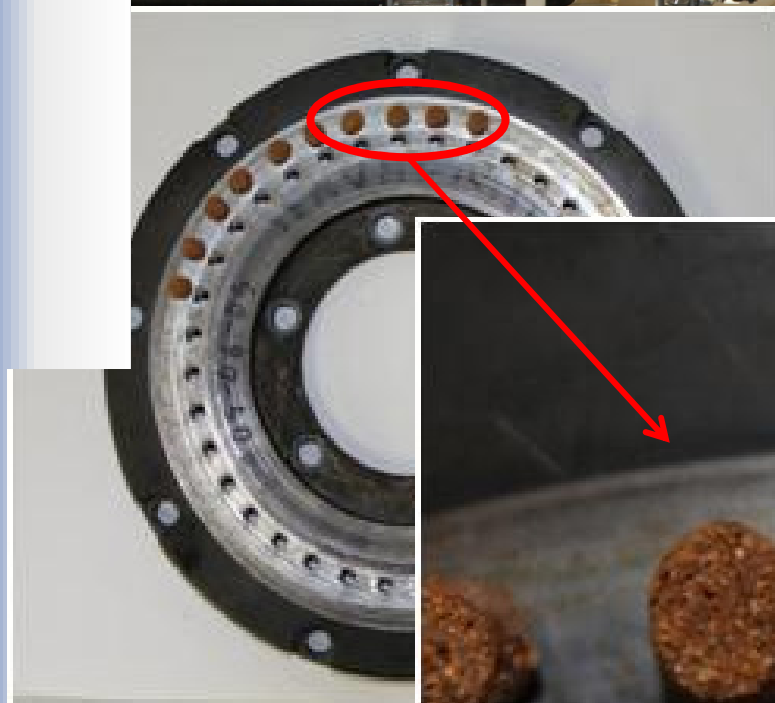




Fóðurframleiðsla



HAVSBRÚN P/F
~PROCESS FLOW~
FEED DIVISION

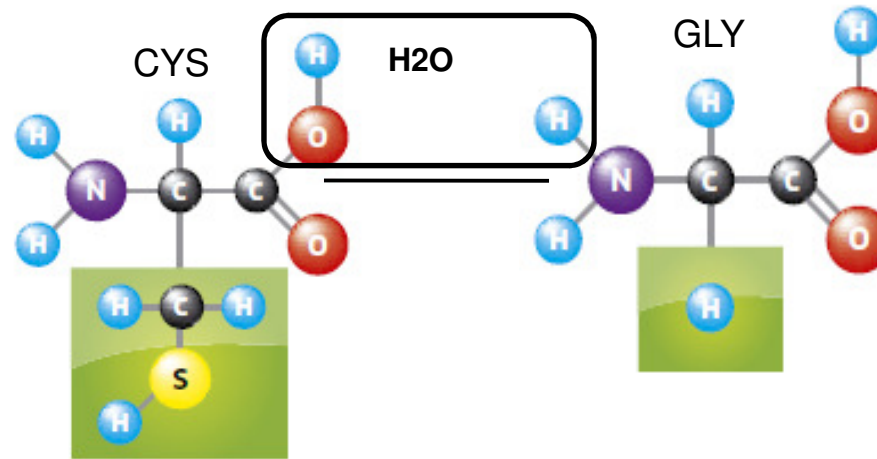
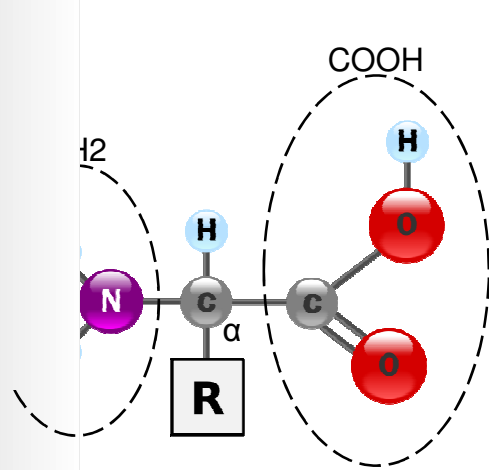


Havgrón 6,5 mm x 38
Útviðkast: ([9 – 6,5] / 6,5) x 100
= 38 %

Shipment/
Storage nr.
30



Protein - byggiklossar



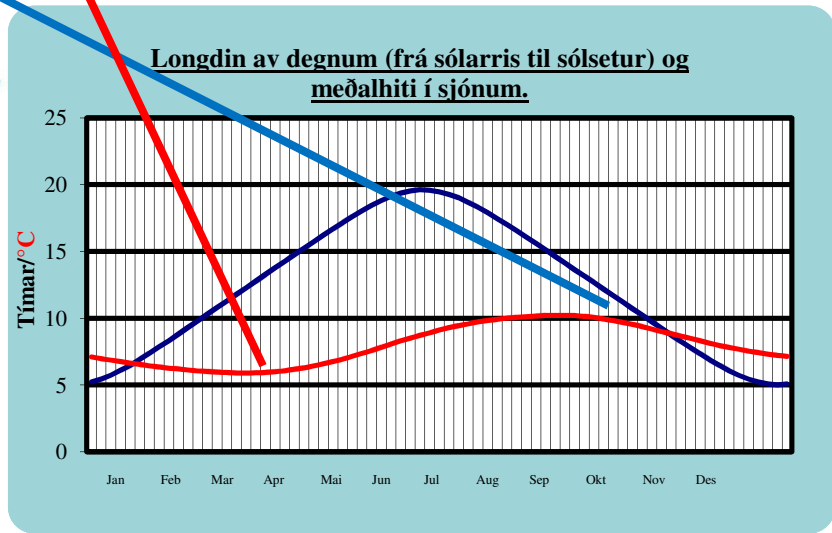
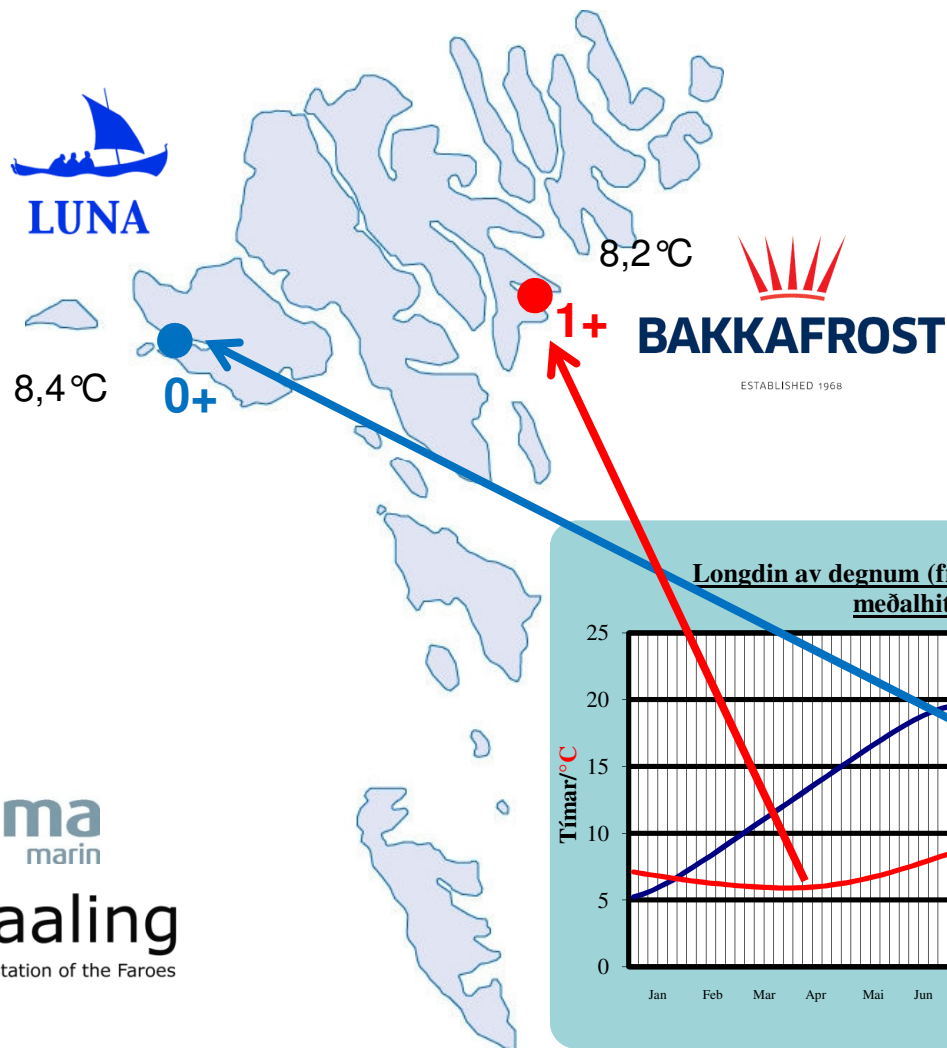
Feitt - feittsýrur



Feitt er ikki bara feitt

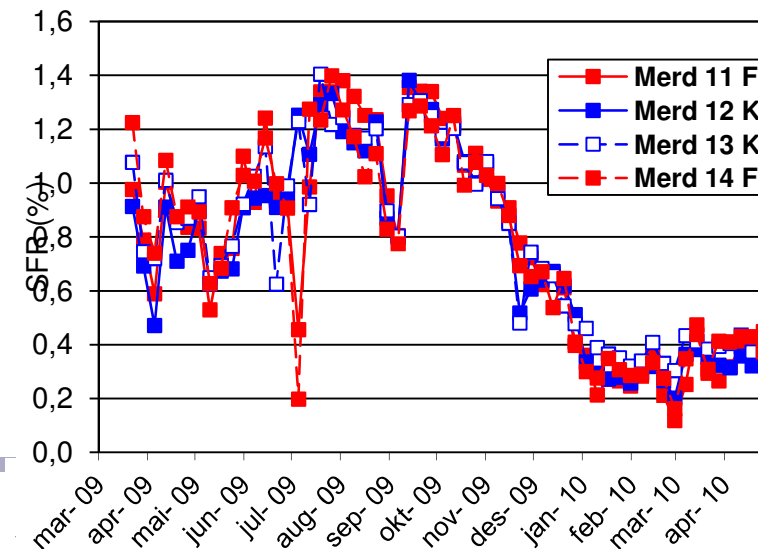
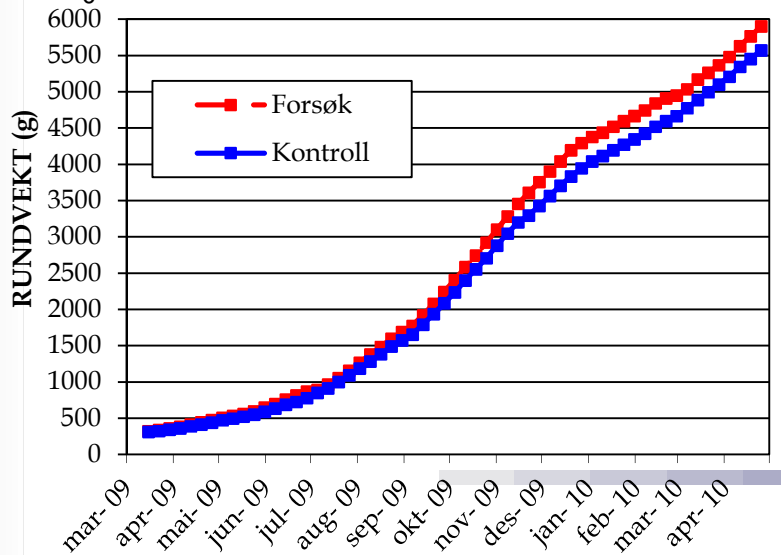
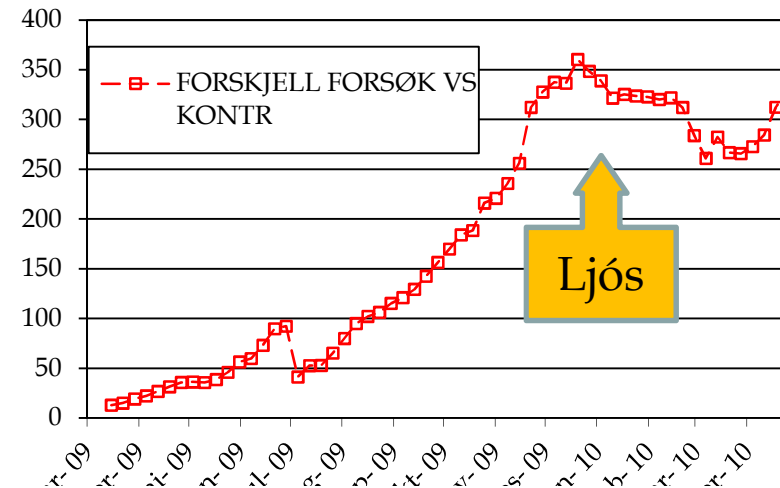
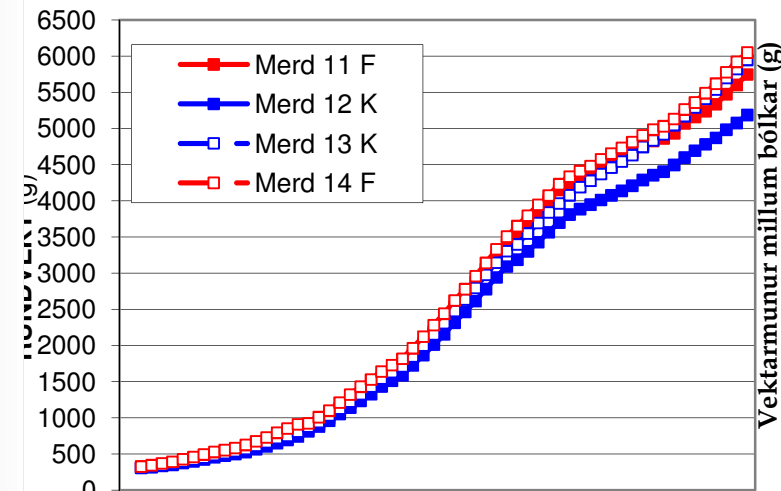


Breitt samstarv



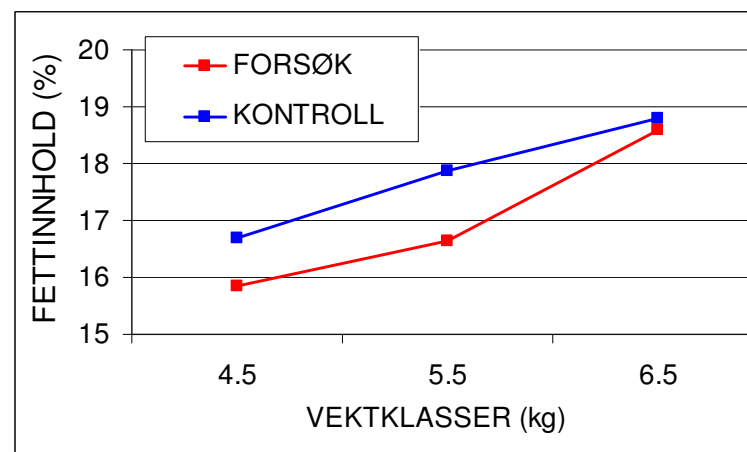
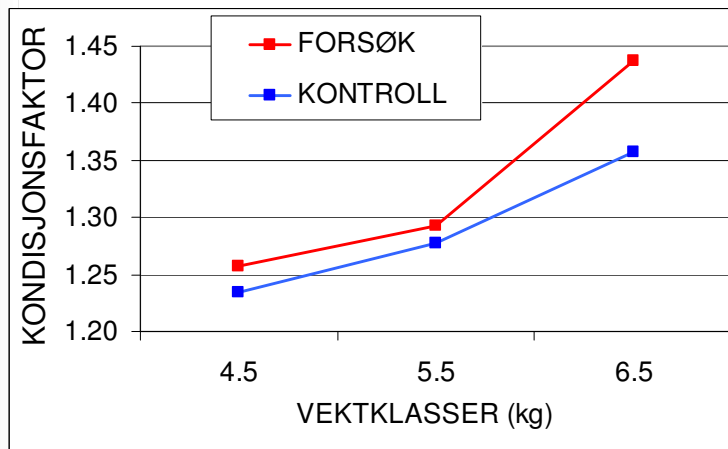
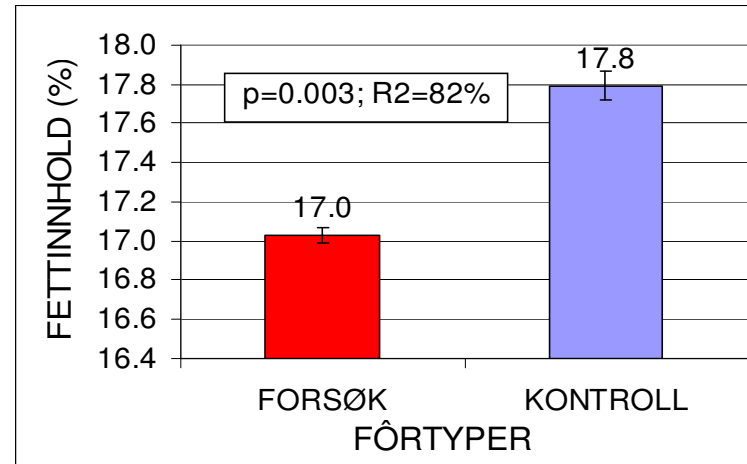
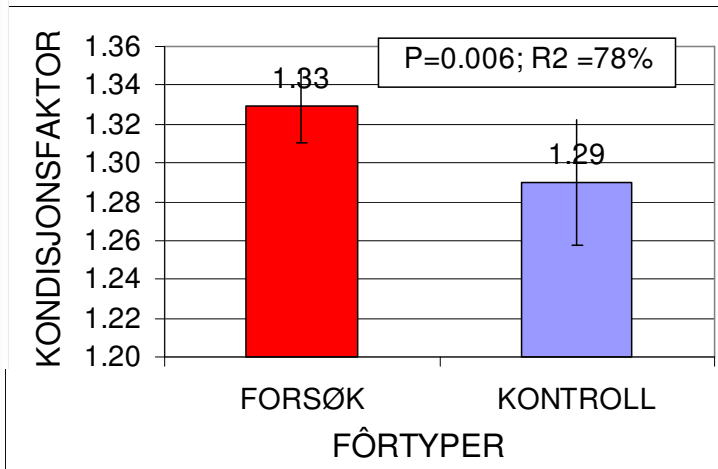
0+

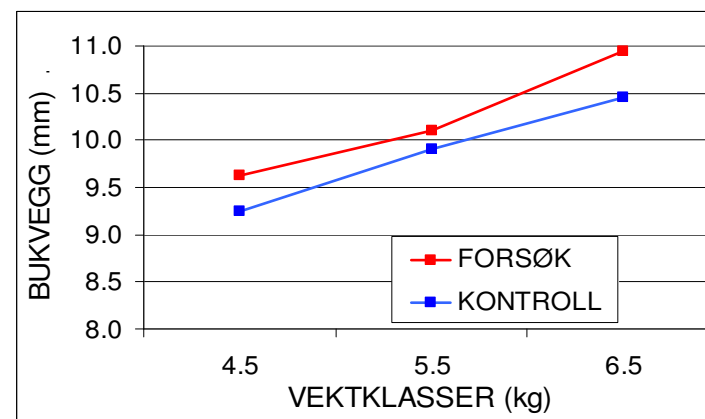
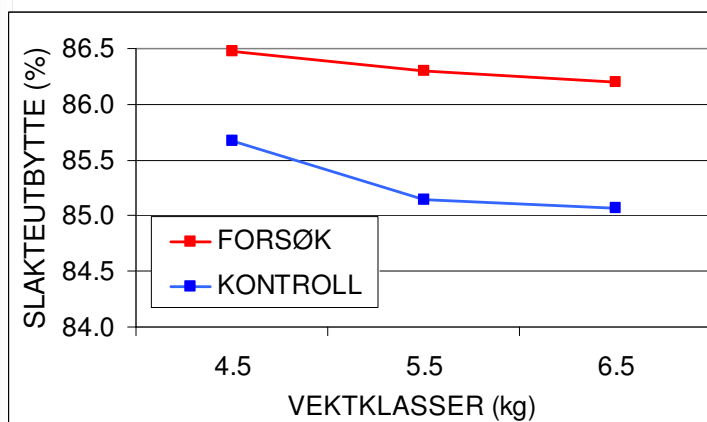
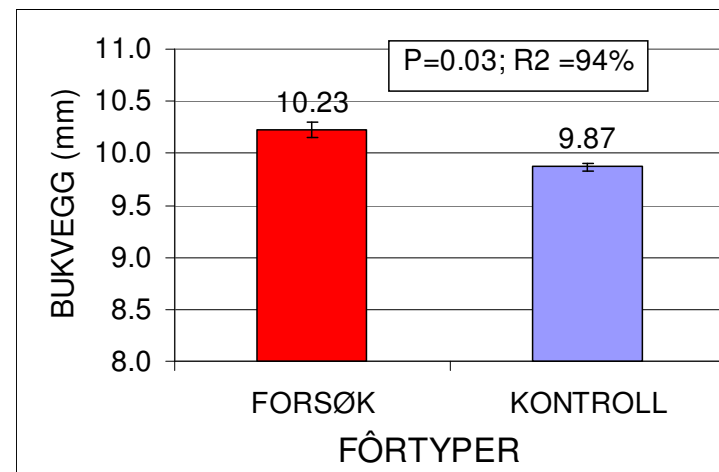
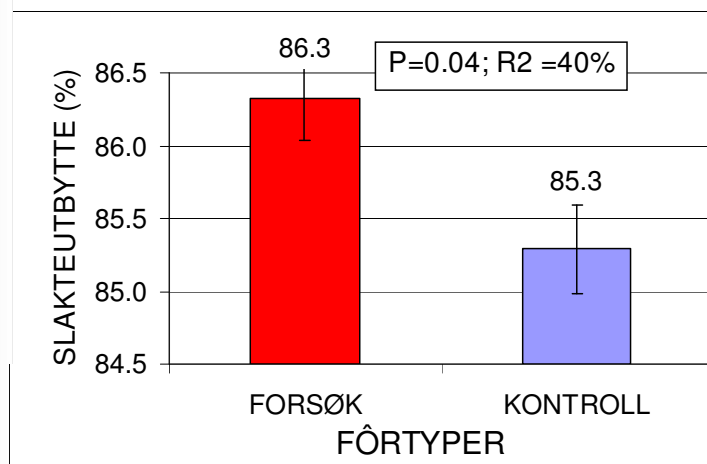
Lívfr. framleiðsluúrslit



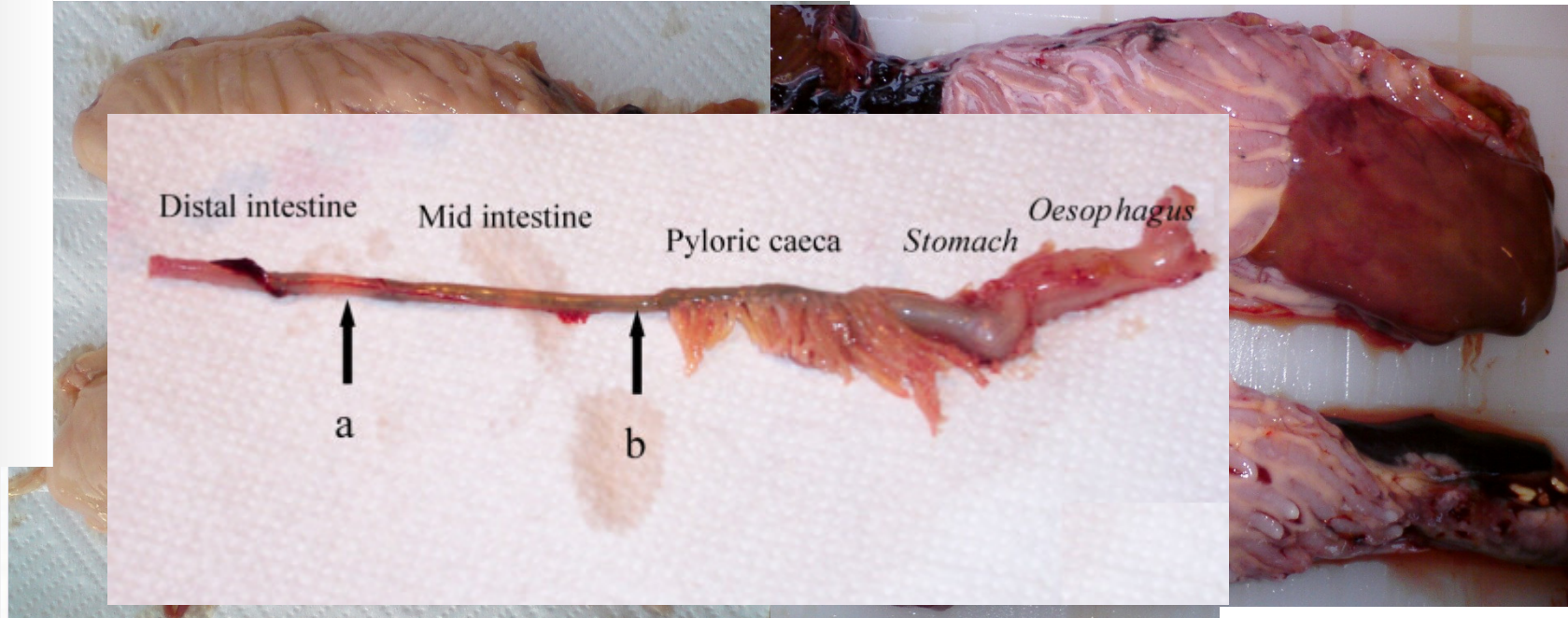
0+

Úrslit





Úrtøka

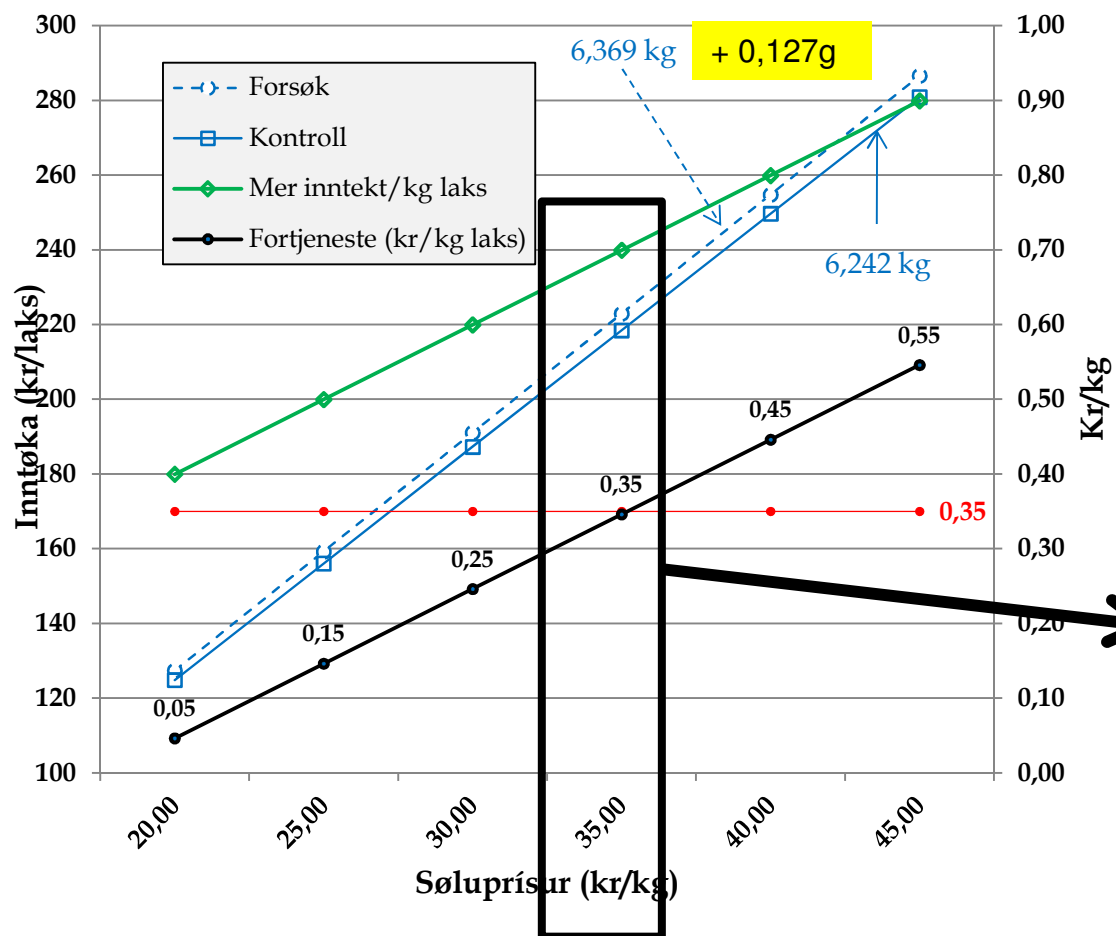


A





Fóðurkostnaður/inntøka (Baserá á endavekt) 0+



Forsøk: 8,51
Kontroll: 8,15
Kr/kg: 0,35

- 11 dagar

- 6,369 kg
 - 6,242 kg

 0,127 kg

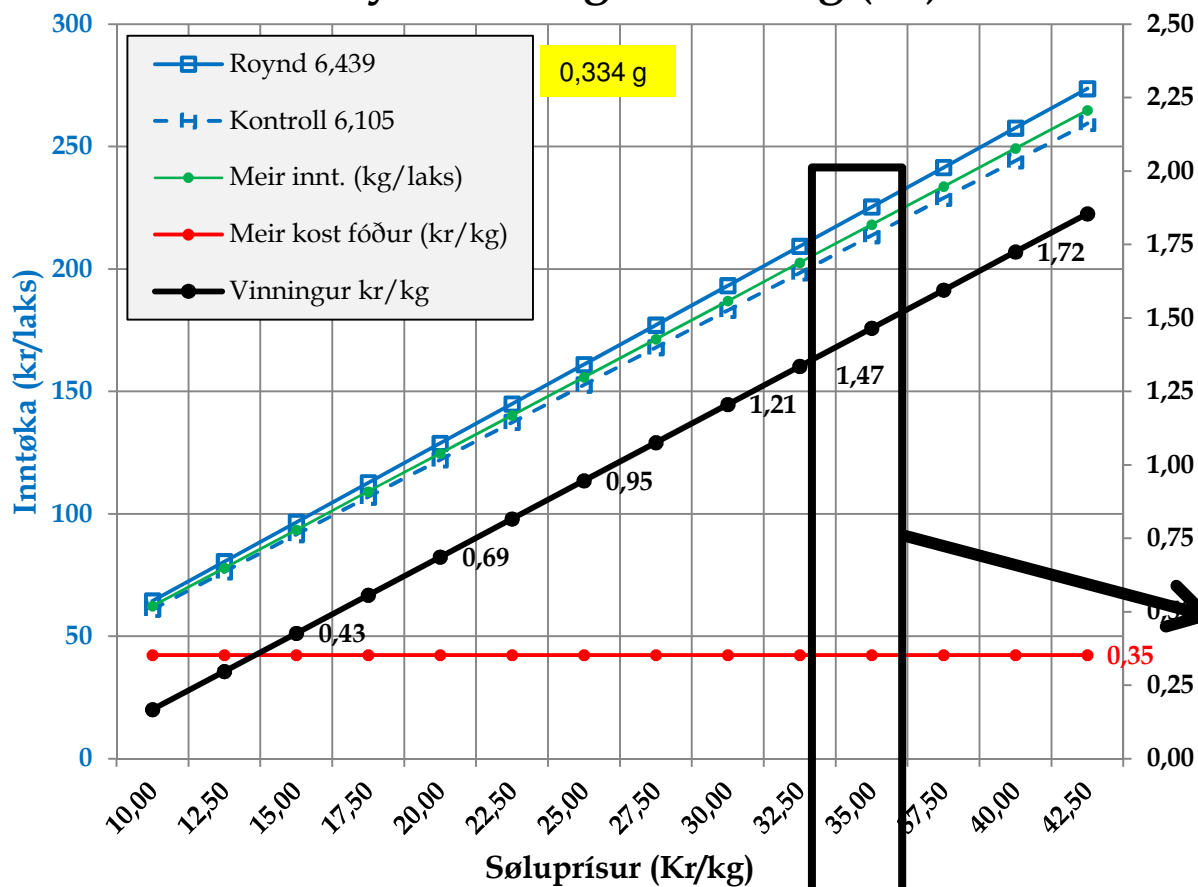
 0,127 kg * 35,00 kr/kg
 = 4,445 kr

 4,445 kr / 6,369 kg
 = 0,70 kr/kg

 0,70 kr/kg - 0,35 kr/kg
 = 0,35 kr/kg

Økonomískt úrslit av fóðri (Baserá á TGC)

Heystútseting Mars 310g (0+)

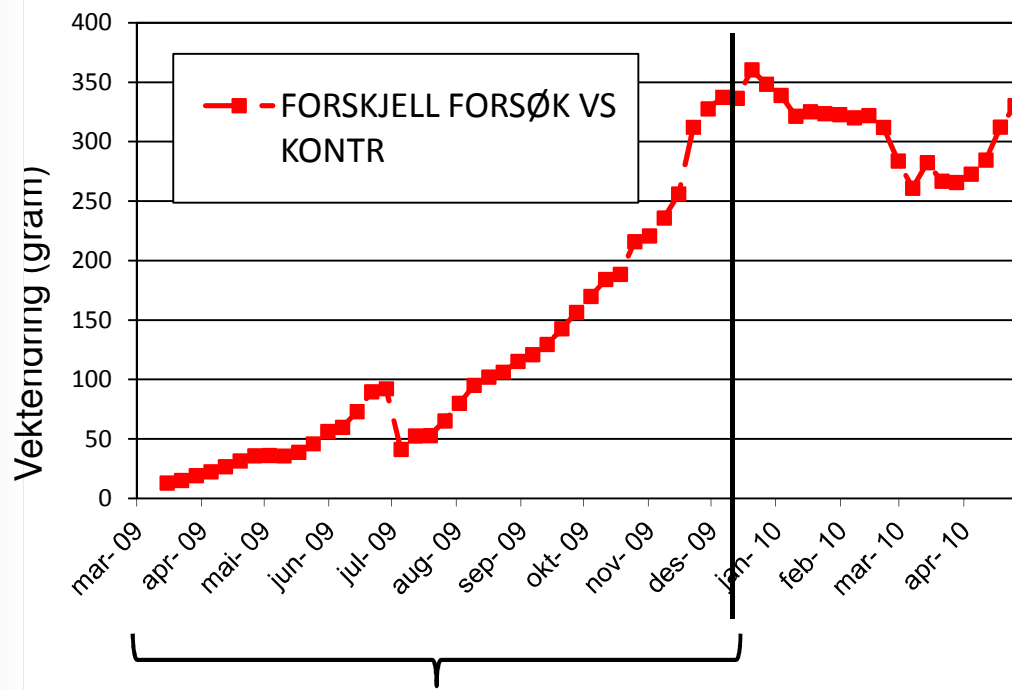


TGC F 3,25
TGC K 3,16

— 6,439 kg
 — 6,105 kg
 — 0,334 kg
 0,334 kg * 35,00 kr/kg
 = 11,69 kr
 11,69 kr / 6,439 kg
 = 1,83 kr/kg
 1,83 kr/kg - 0,35
 kr/kg
 = 1,48 kr/kg

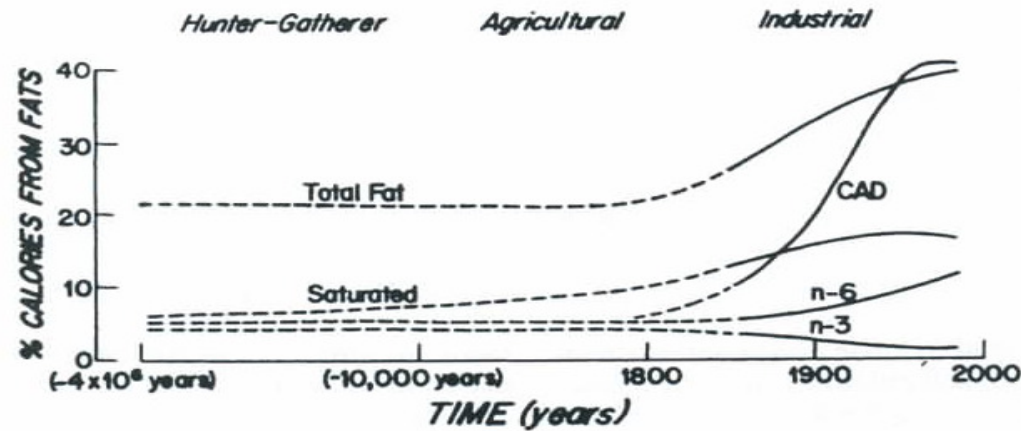
Optimeringspotentiale (0+)

Vækstur

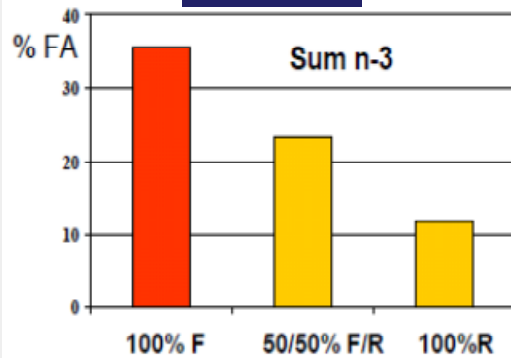


Smolt	Bólkur	Start dagur	Enda dagur	FCR	TGC	DGR	Miðal hiti	Start Vekt	Enda Vekt	Vekt øking	Munur
0+	Kontroll	15. mars	13. des	1,20	3,23	2520	8,4	320	3361	3041	442
	Roynd	15. mars	14. des	1,14	3,48	2520		320	3803	3483	

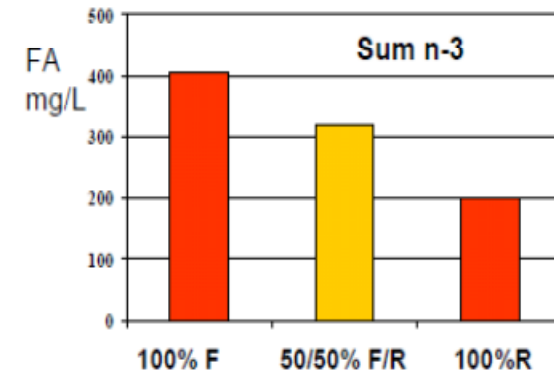
Tú verður tað, tú etur!



Fóður



Plasma



Seierstad et al. (2005)

Tú verður tað, laksurin etur!

Takk fyri

???