

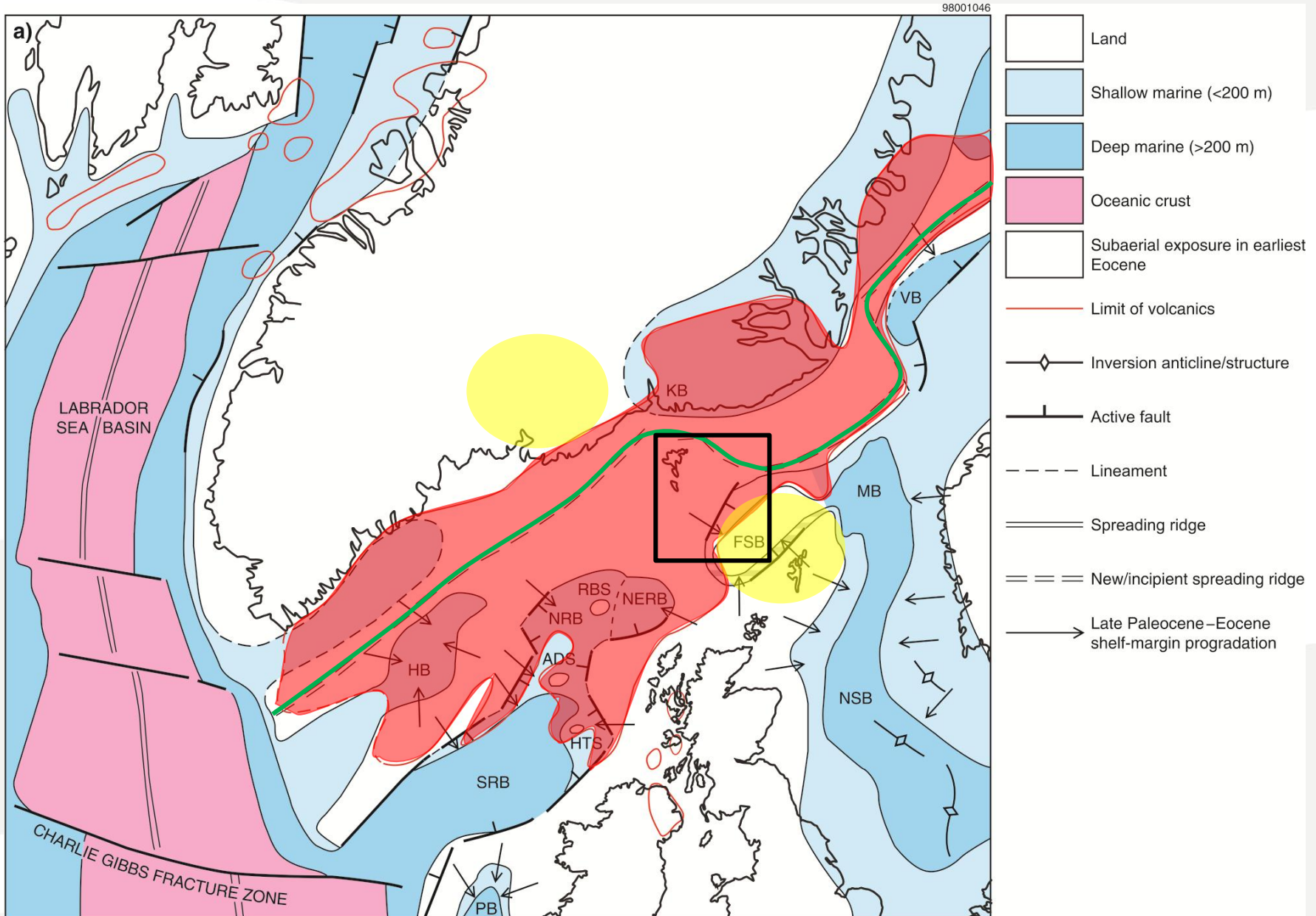


Næsta stig á kolvetnisleiðini kann verða ein djúp boring á landi

Jana Ólavsdóttir, Jarðfeingi



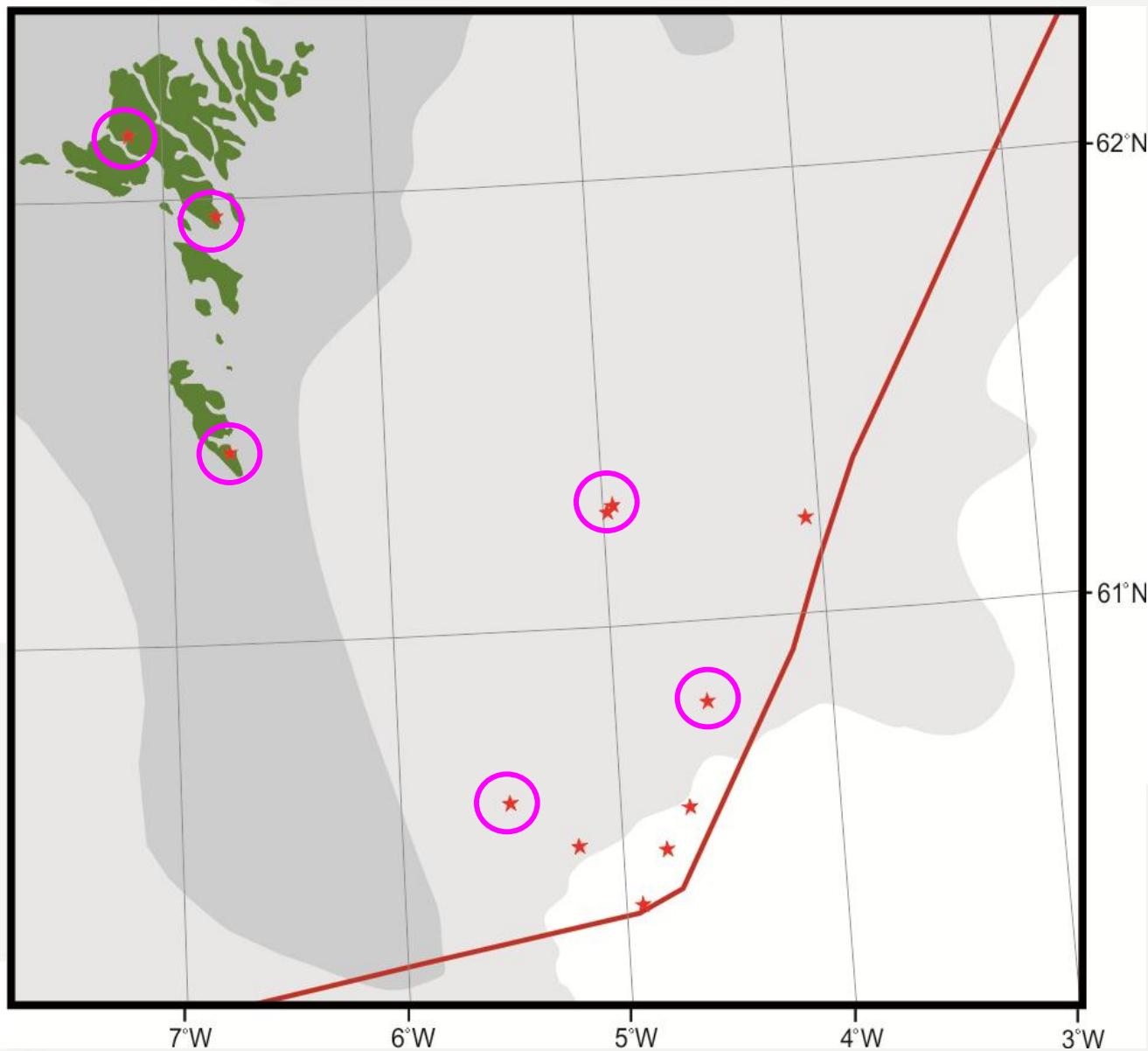
Paleocene (55 mill.)



2D og 3D seismisk data og djúpar boringar



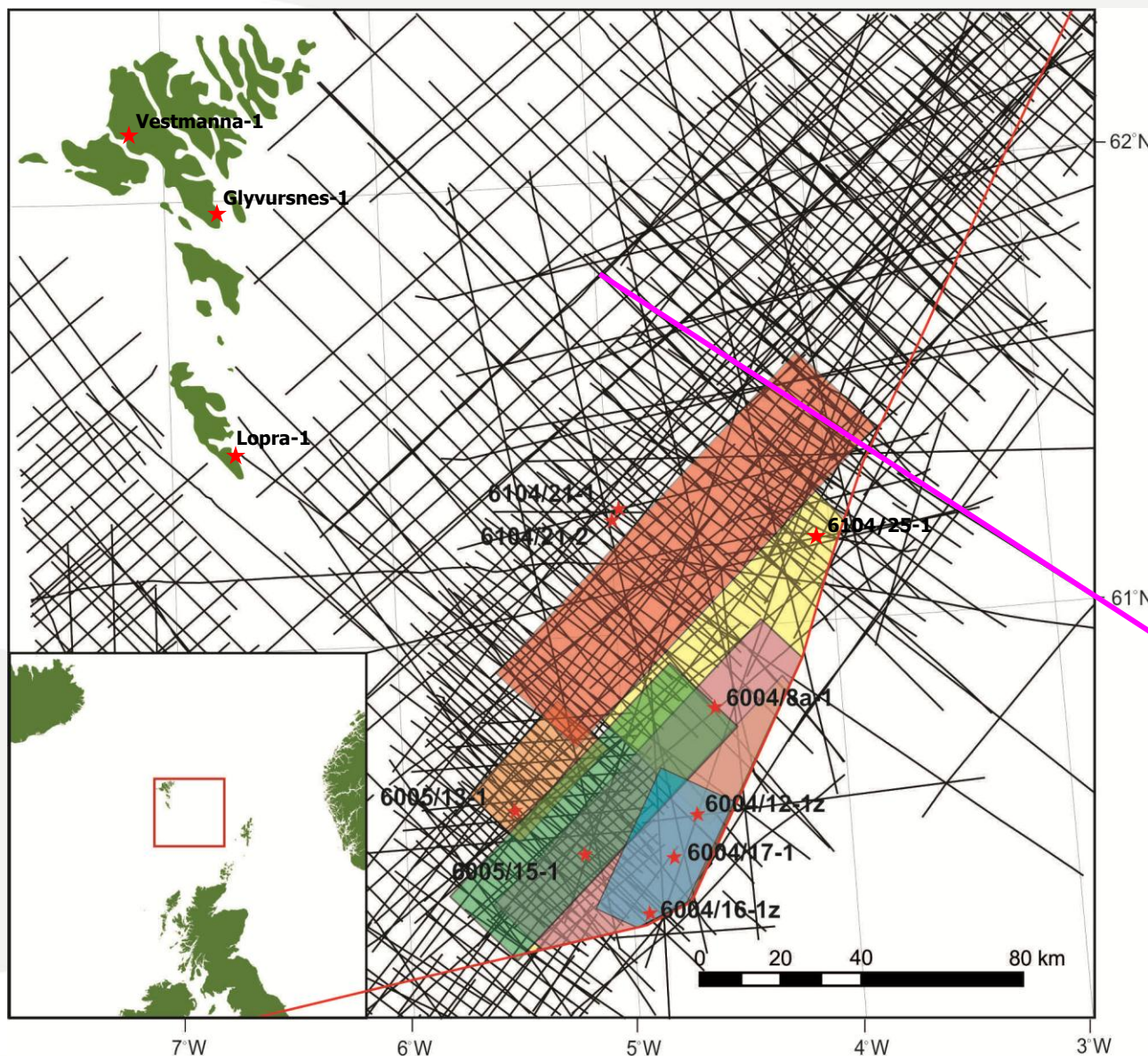
JARÐFEINGI
FAROESE EARTH AND ENERGY DIRECTORATE



2D og 3D seismisk data og djúpar boringar



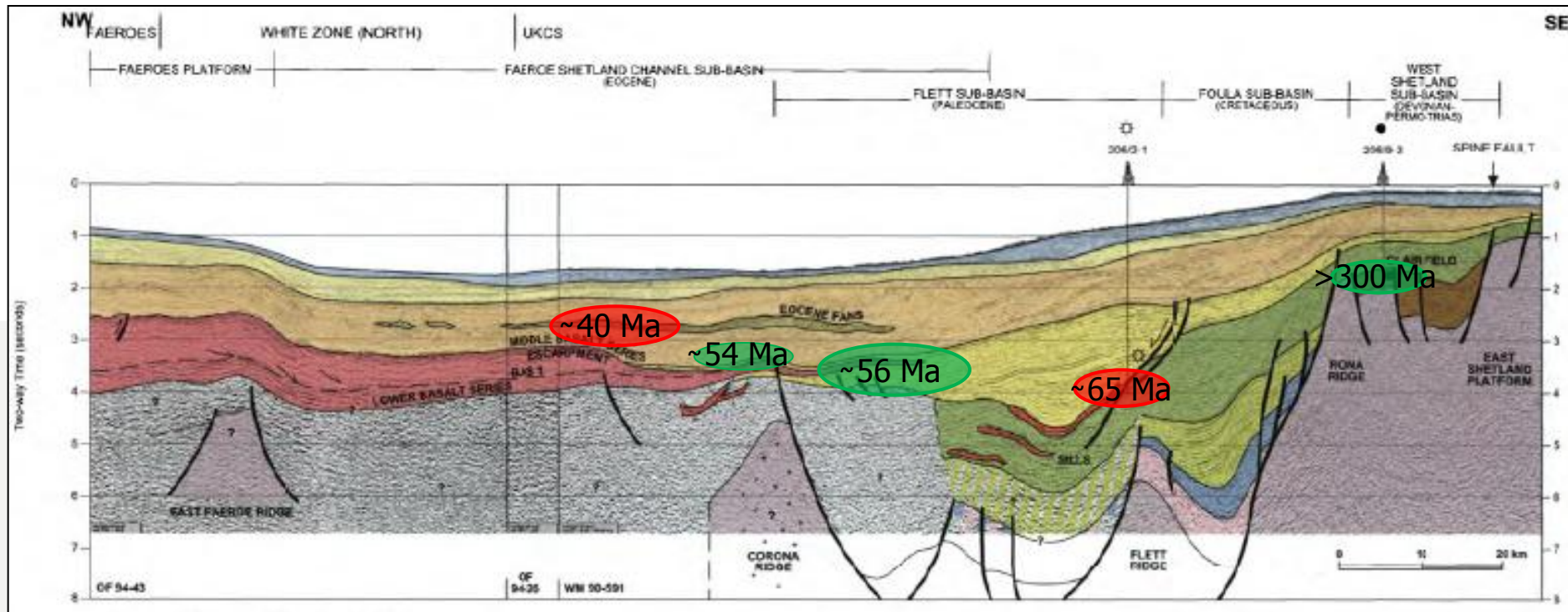
JARÐFEINGI
FAROESE EARTH AND ENERGY DIRECTORATE



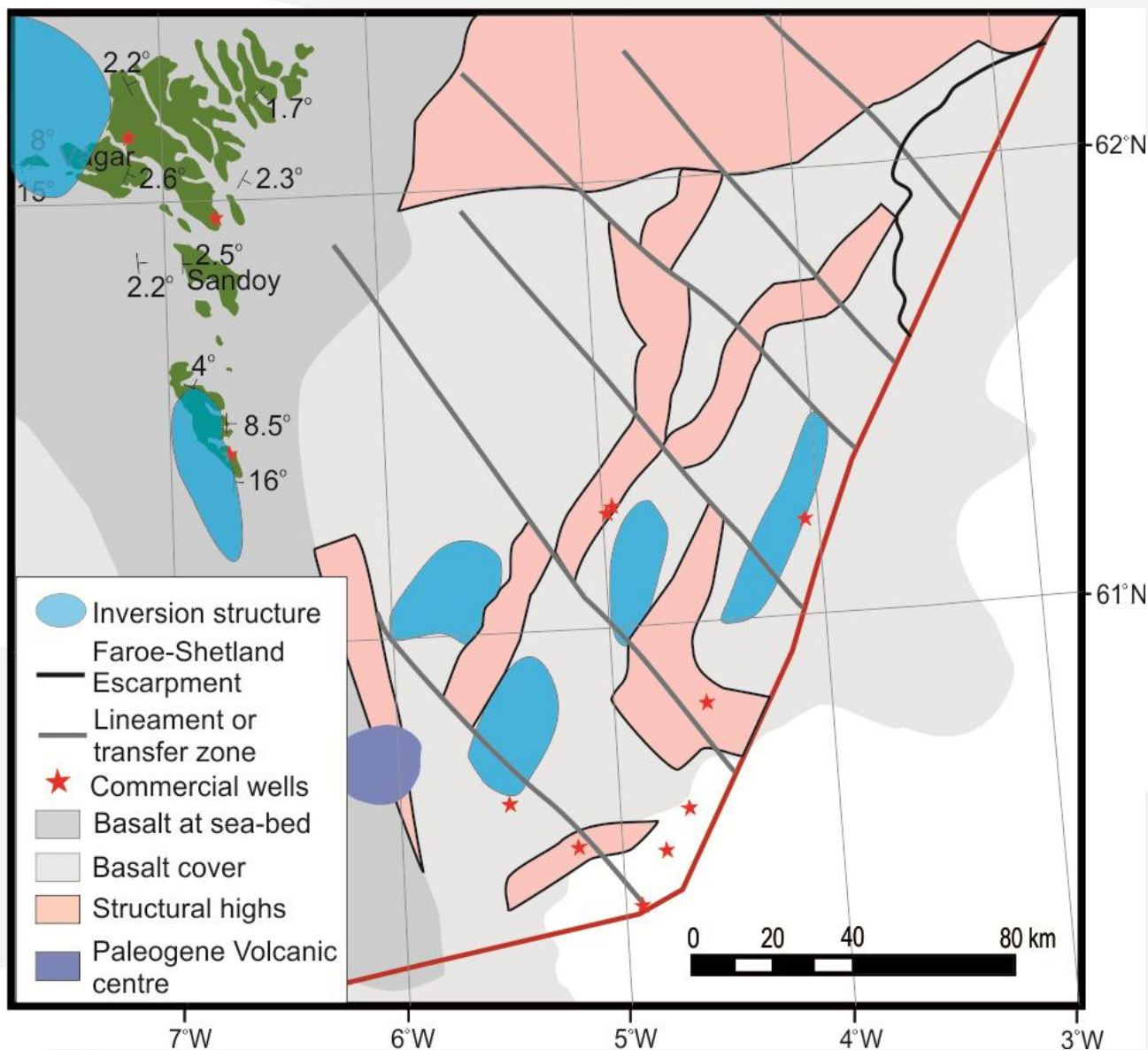
2D seismic data



Tobermory Cambo Rosebank Laggan Clair



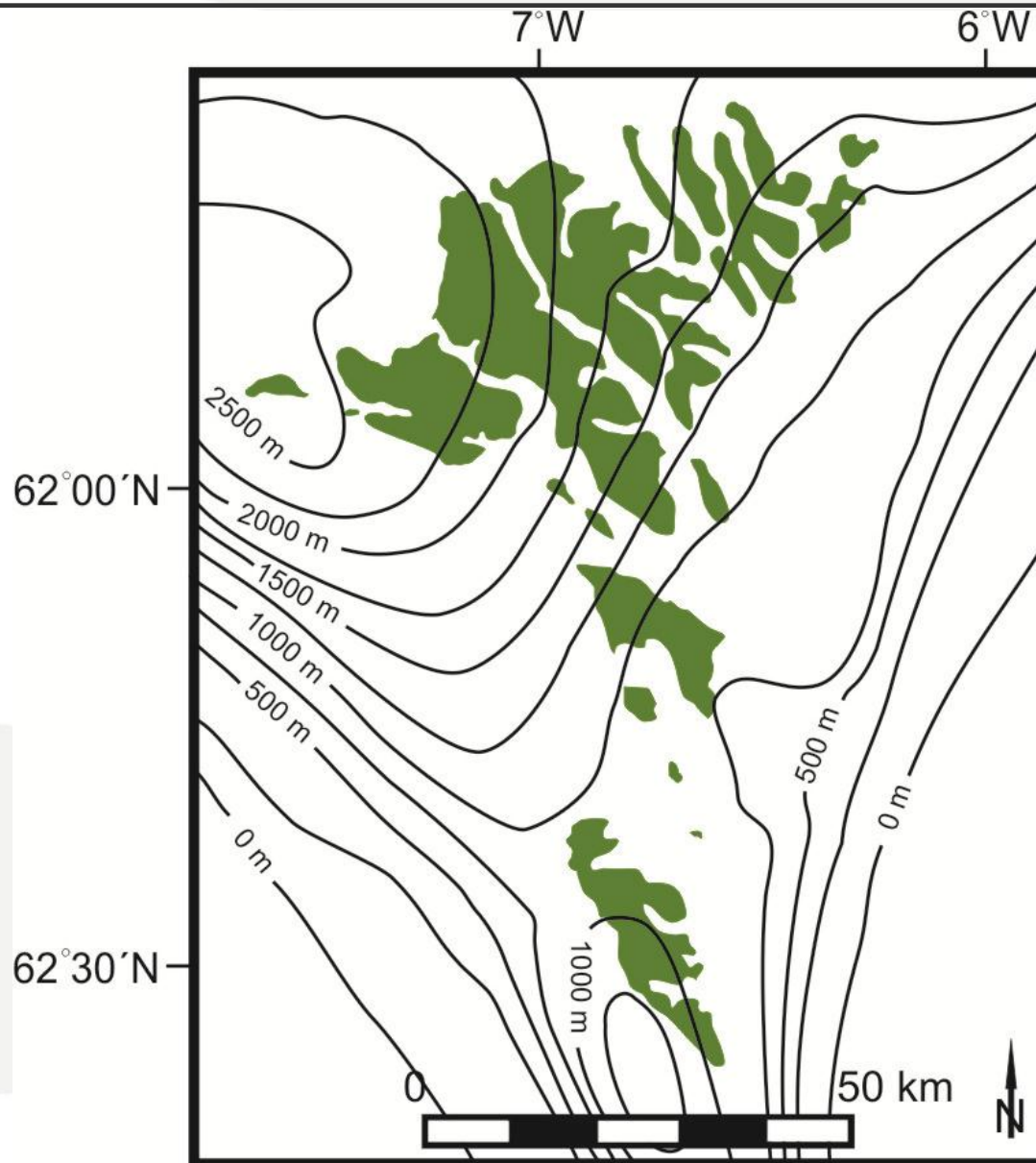
Invesjón av lægdum fyri uml. 15 mió árum síðani



Máa tilfar í m av Føroyum seinastu 5 mió. árin

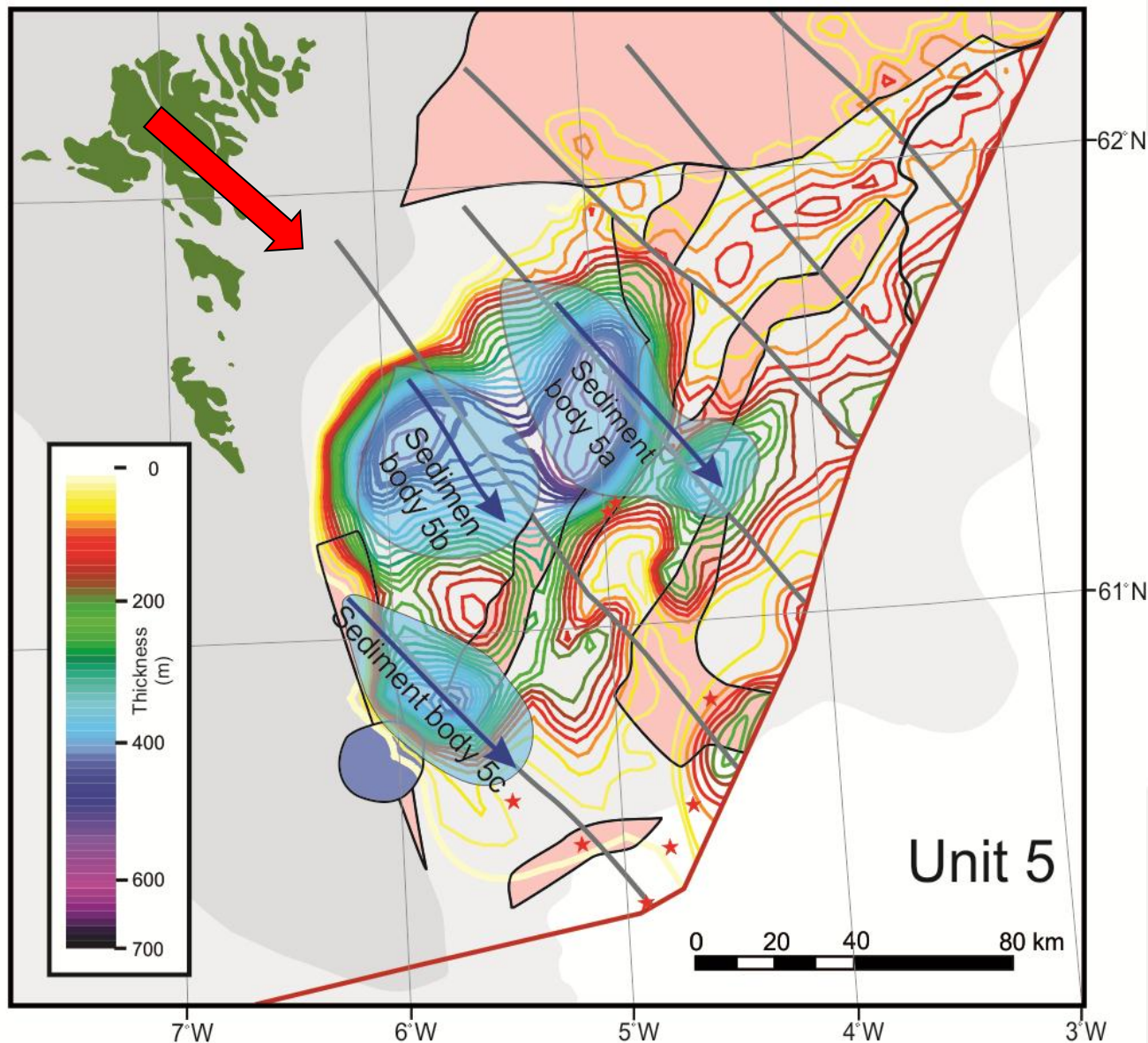


JARÐFEINGI
FAROESE EARTH AND ENERGY DIRECTORATE

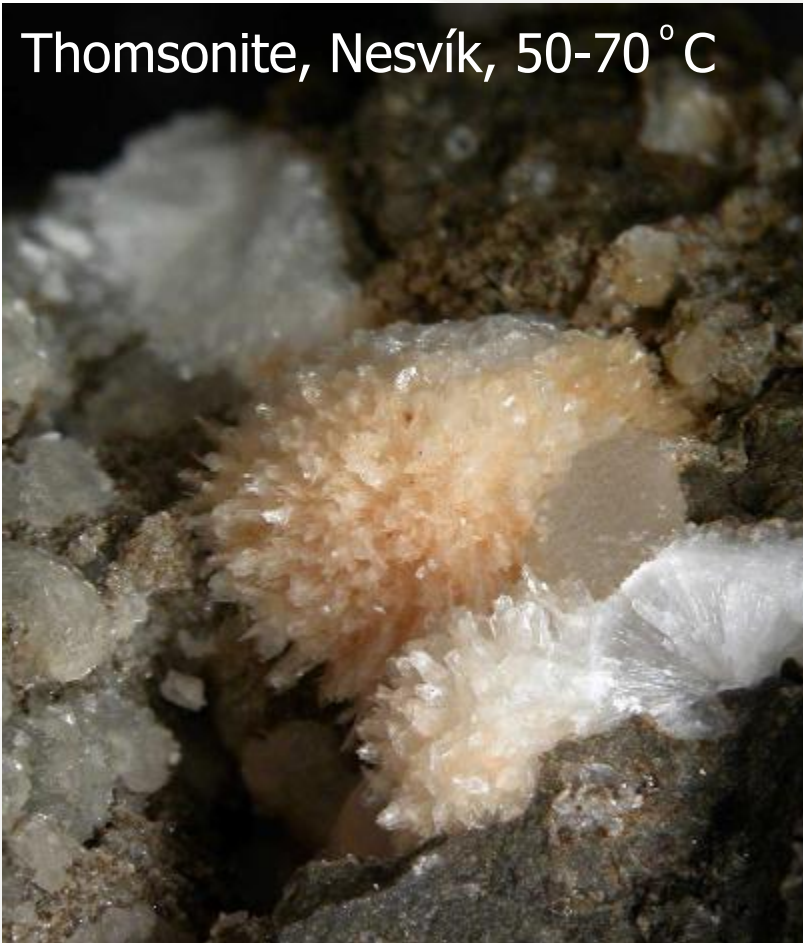


Andersen et al., 2002

Upp í 700 m av hesum máaða tilfarið er botnsett í Hetlandsrennuni

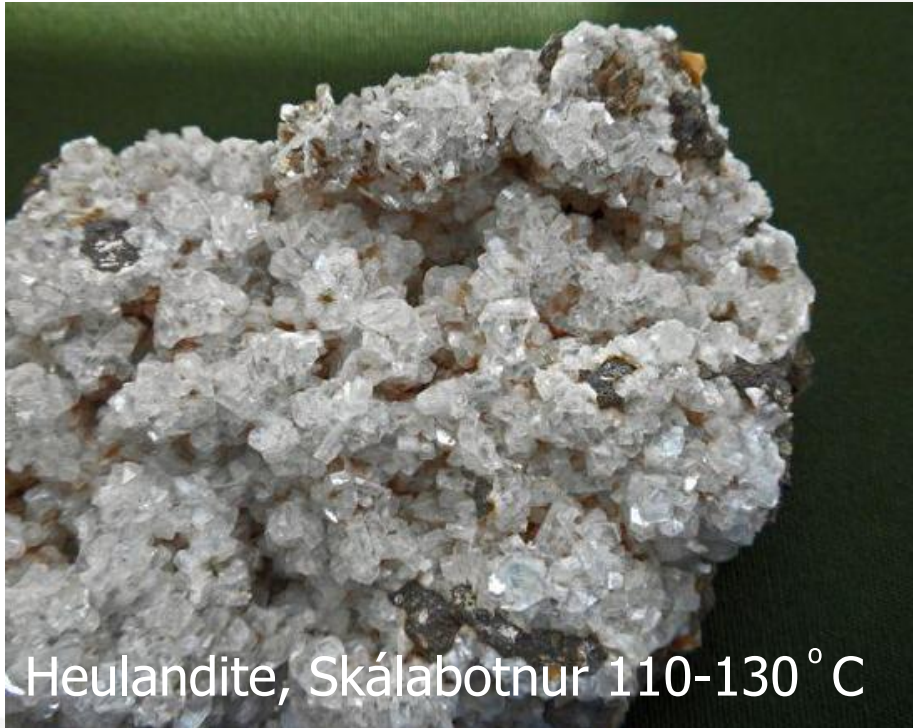


Thomsonite, Nesvík, 50-70 °C



Mesolite, Skálabotnur, 90-100 °C



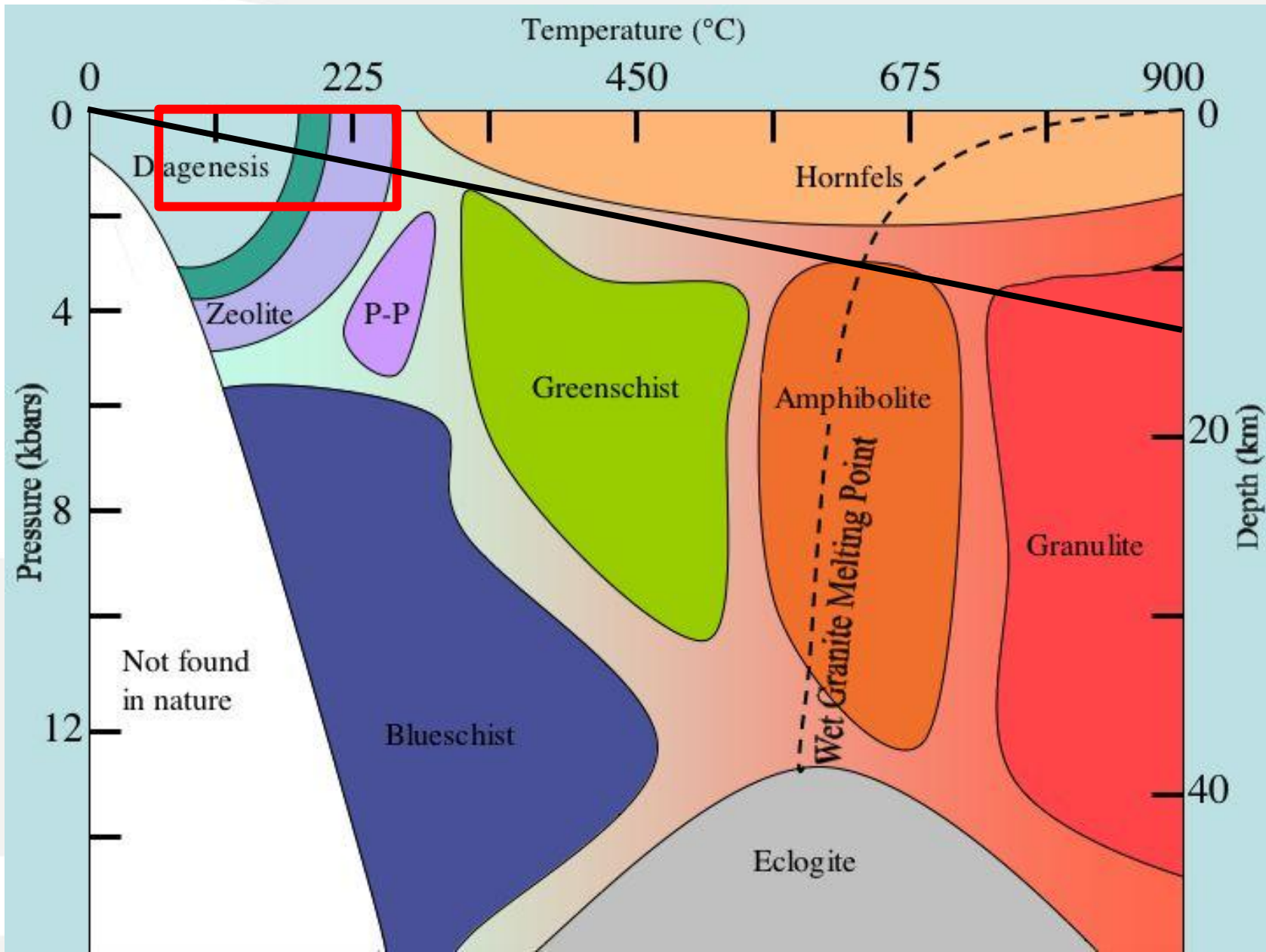


Heulandite, Skálabotnur 110-130 °C



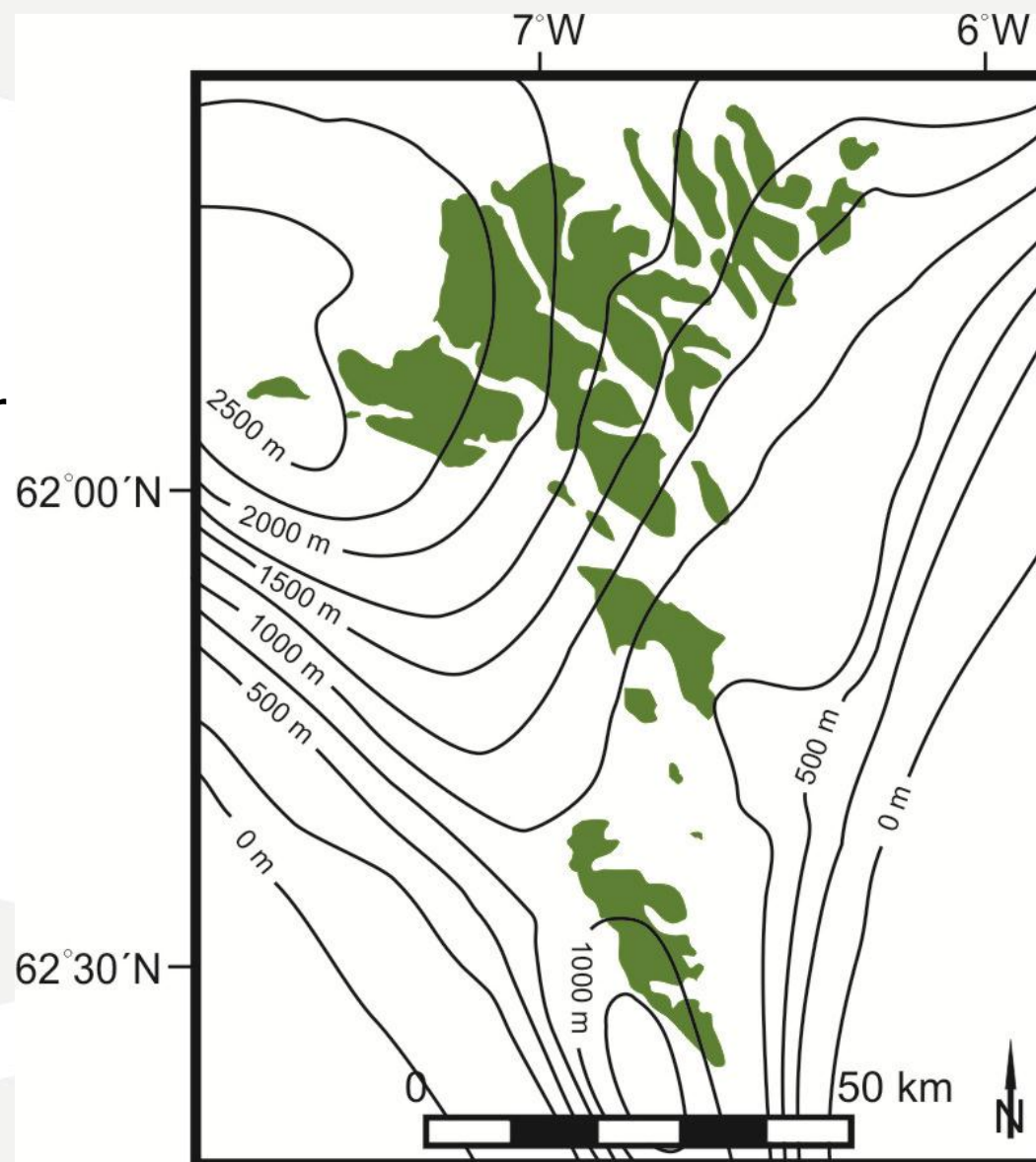
Laumontite, Miðvágur, 190-230 °C

Soðsteins sonur styrðar av hita og tryst

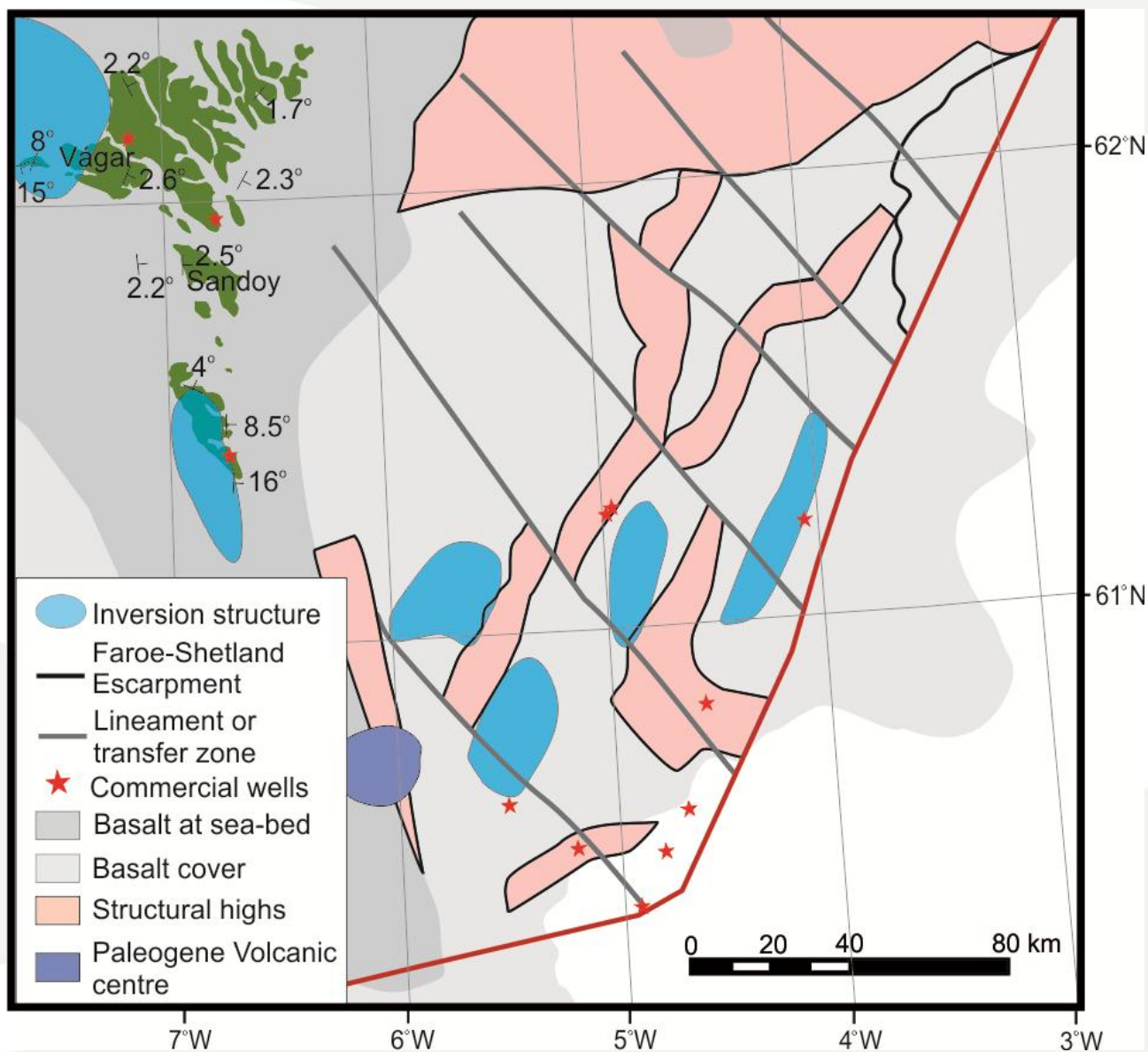


Ástøði hjá Jørgensen 2006
vísir seg at hava sama trend
sum ástøði hjá Andersen et
al., 2002, men við eitt sindur
lægri virðum:

- ~2000 m av Vágoynni
- ~700 m Suðuroy



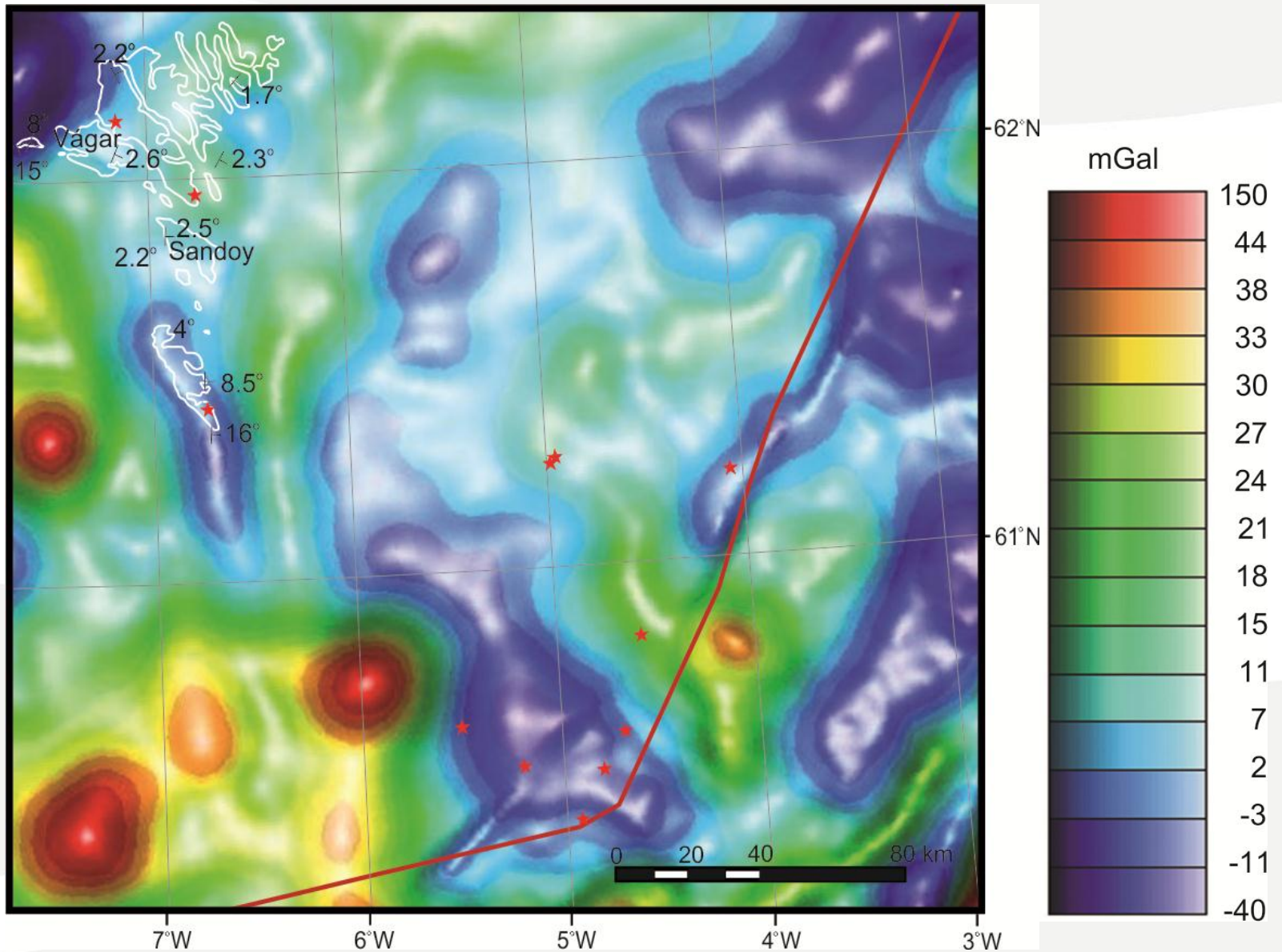
Inversjóns strukturar



Bourgeur tyngdarfrávik



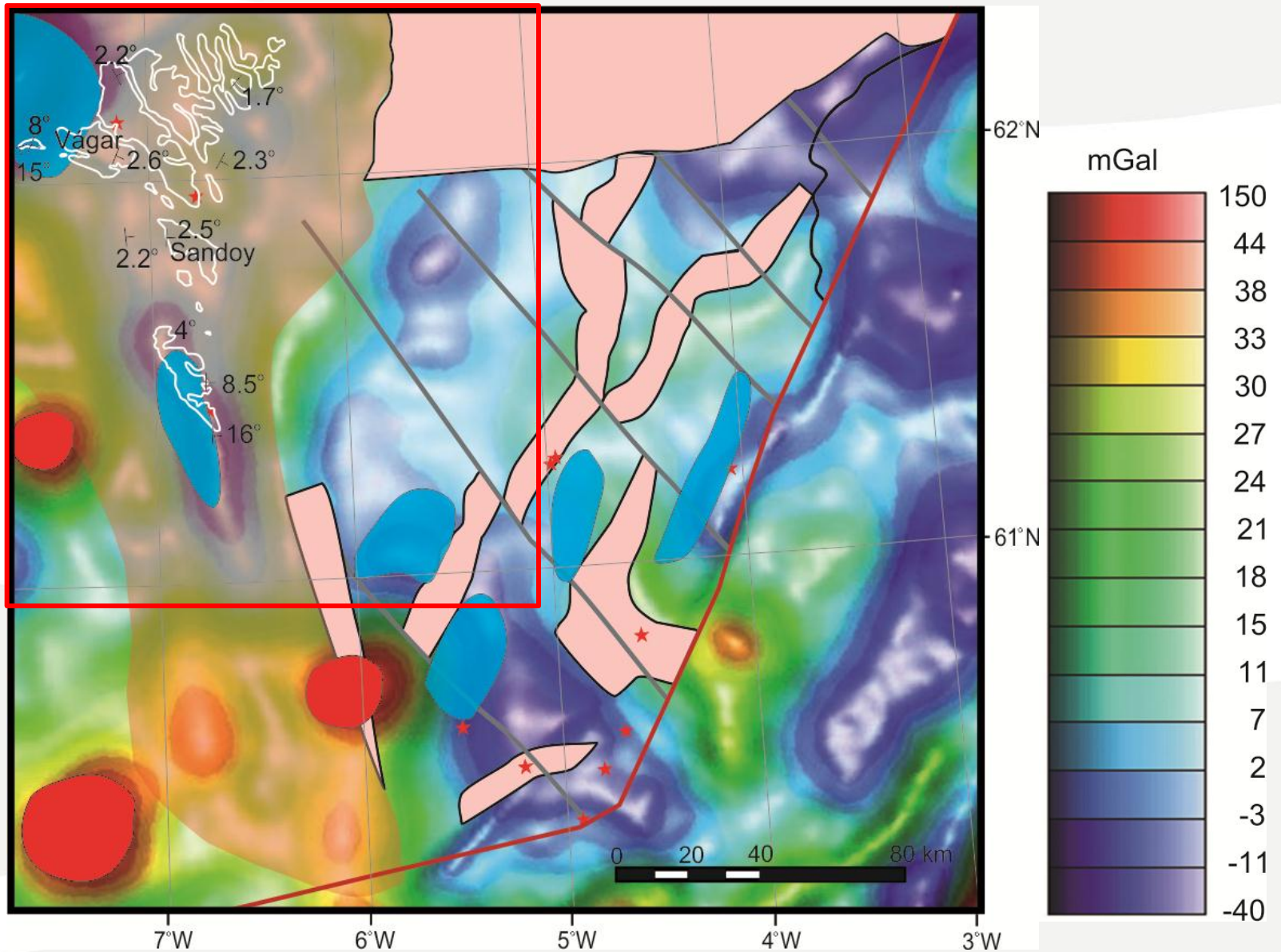
JARÐFEINGI
FAROESE EARTH AND ENERGY DIRECTORATE



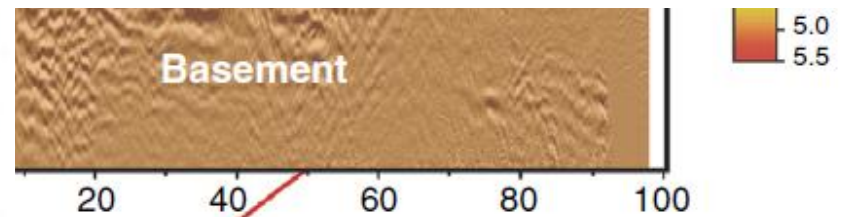
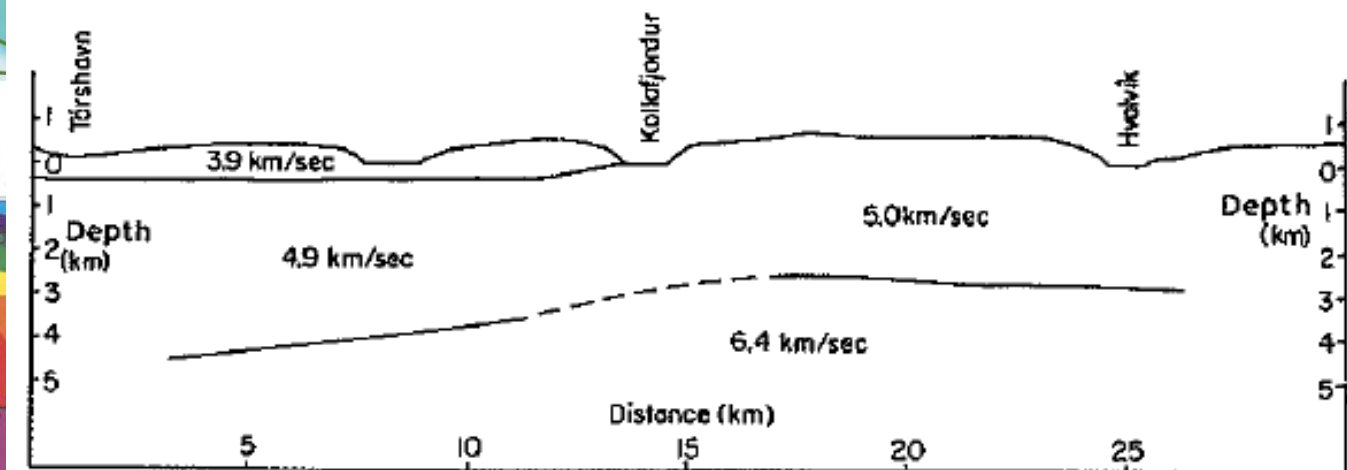
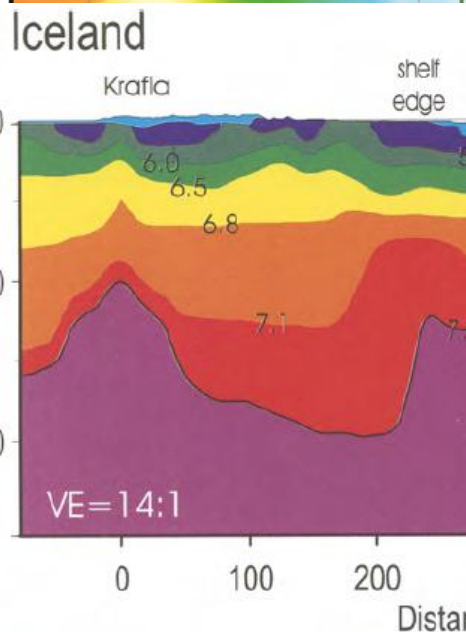
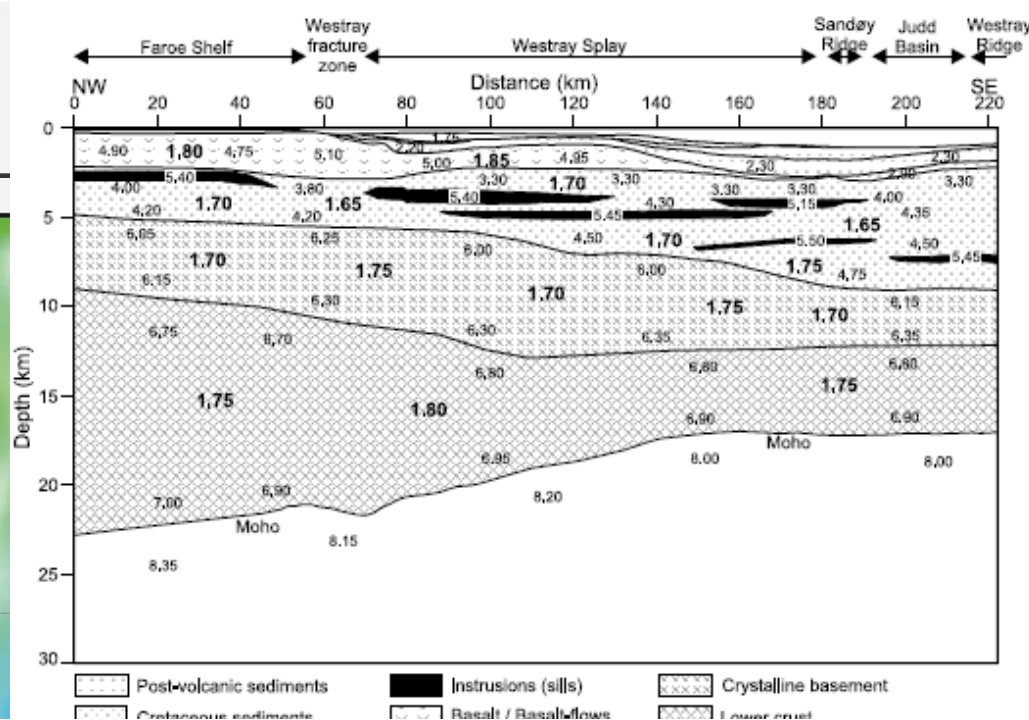
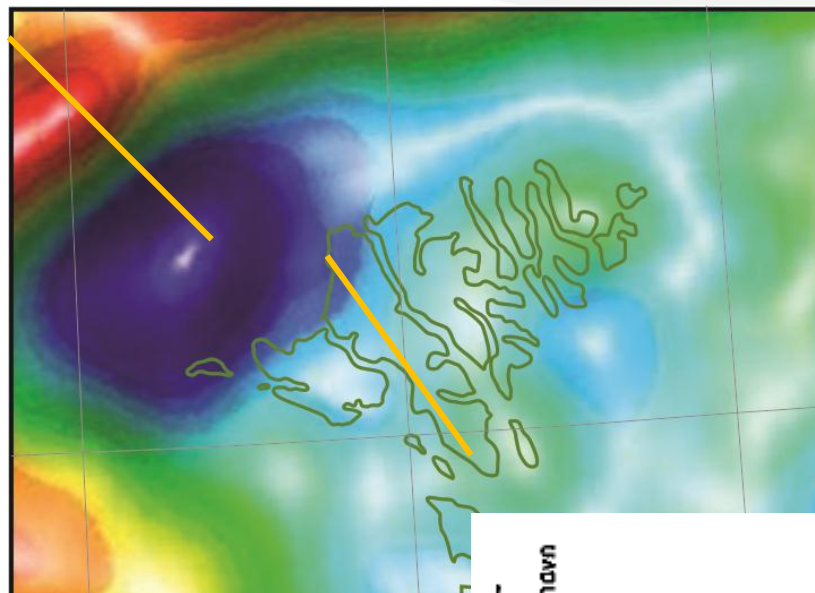
Inversjón av lægdunum fyri 10-15 mió. árum síðani



JARÐFEINGI
FAROESE EARTH AND ENERGY DIRECTORATE



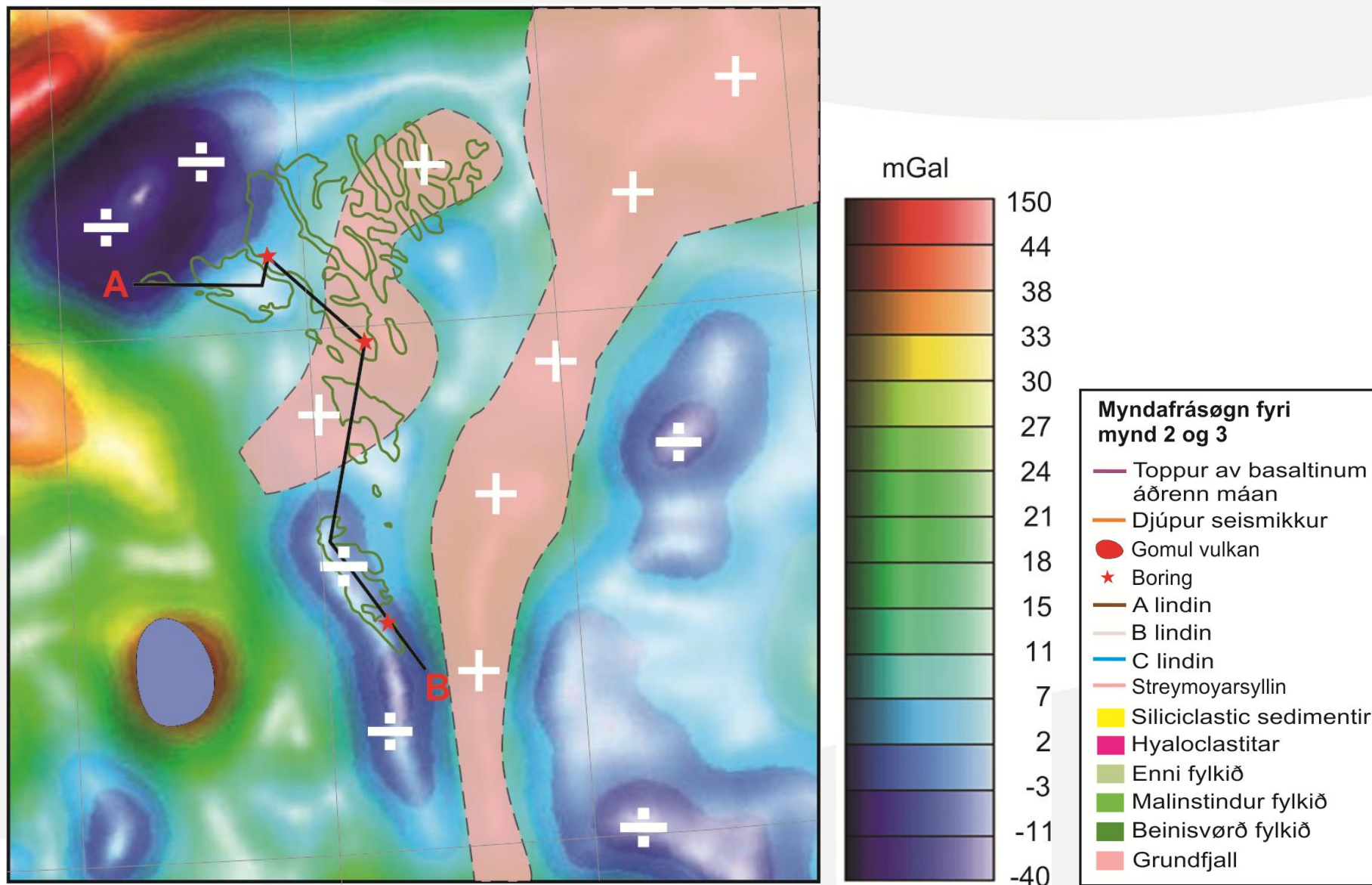
Hvussu djúpt liggur grundfjallið



Tulking av fjallaryggum og lægdum á grundfjallstöði



JARÐFEINGI
FAROESE EARTH AND ENERGY DIRECTORATE

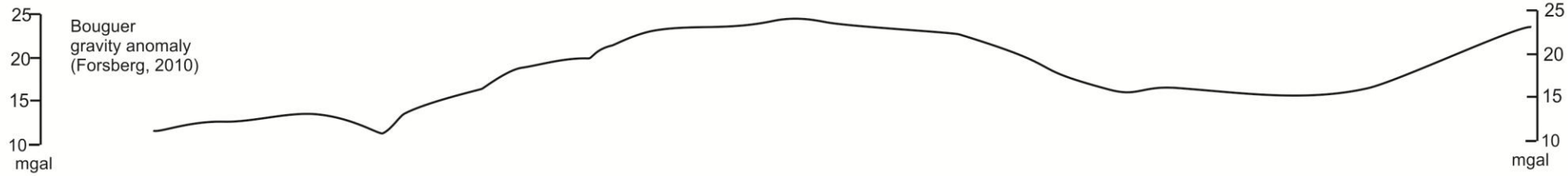


Jarðfrøðiligur tvørskurður frá Mykines til Suðuroyar

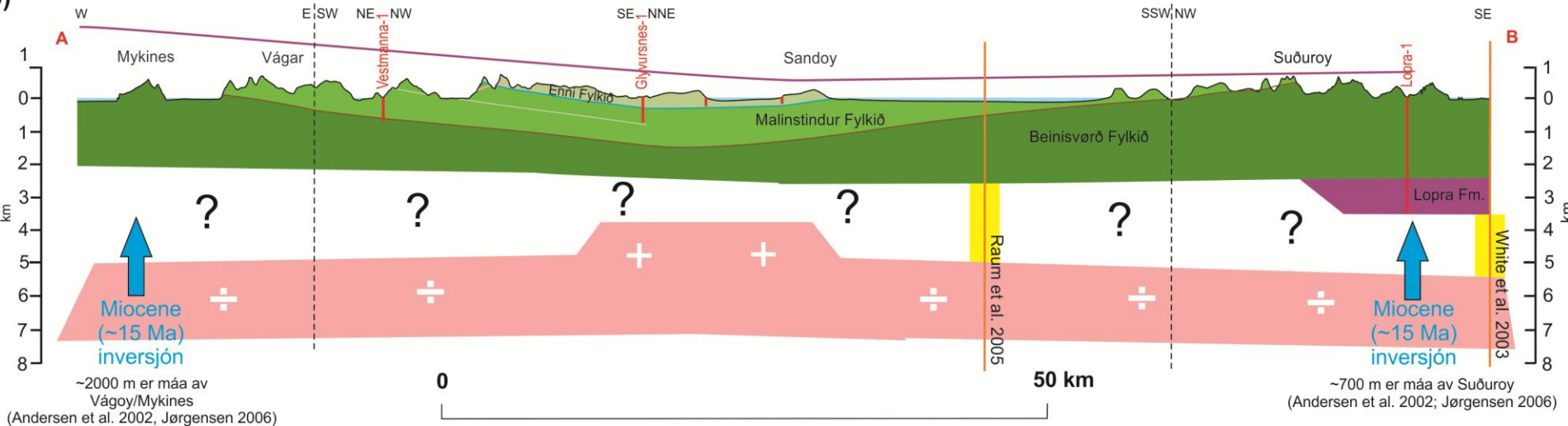


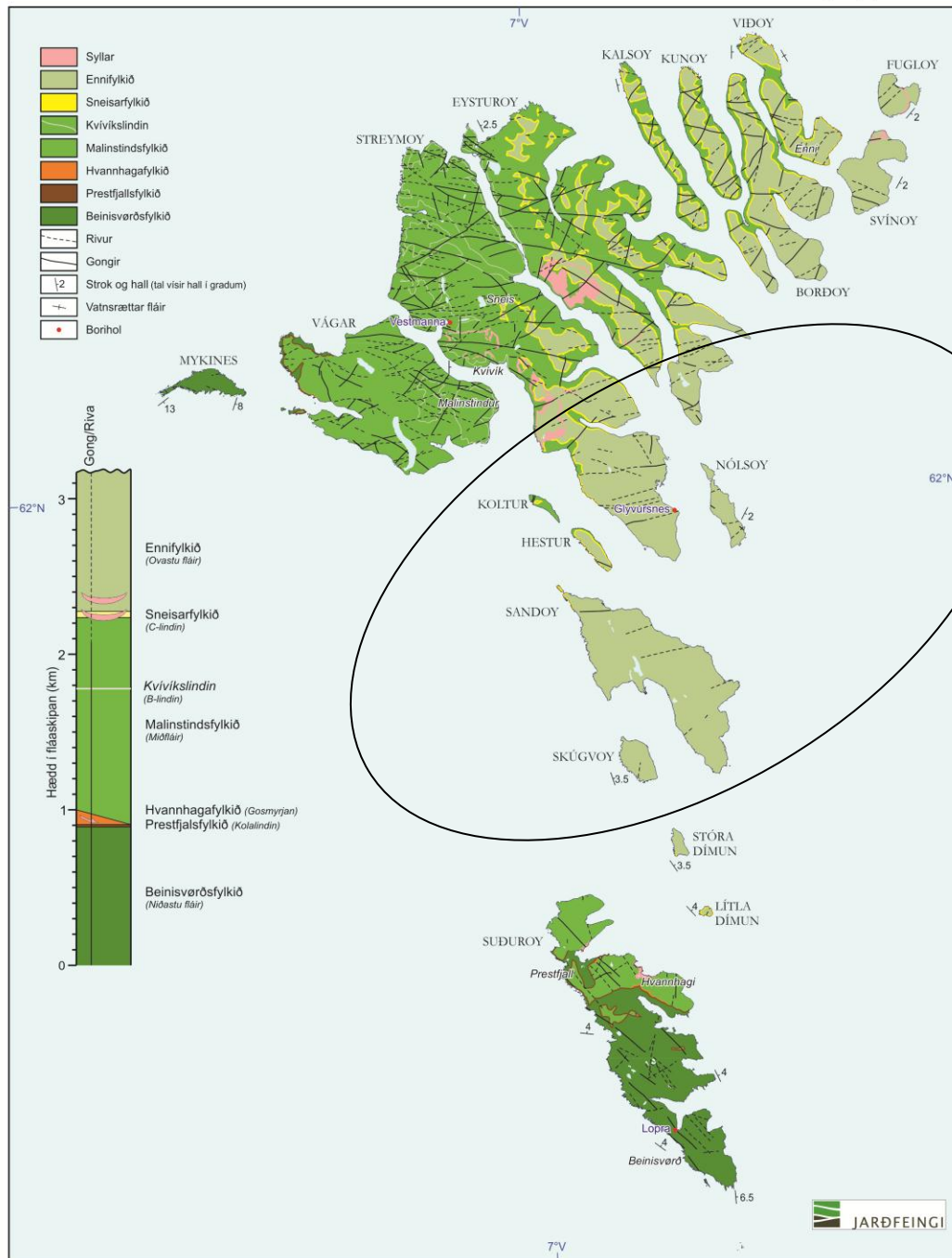
JARÐFEINGI
FAROESE EARTH AND ENERGY DIRECTORATE

a)



b)





Kanningarnar geva ábendingar um at vit eisini undir Føroyum hava lægdir eins og í Hetlandsrennuni har innihaldi í lægdunum er upplift orðsaka av stór skala tektonikki fyri 10-15 mió árum síðani.

Frá djúpum seismikki sæst at Gundfjallið:

- vestan- og norðanfyri Vágoy liggur á >10 km dýpi.
- sunnast á Streymoy liggur á uml. 4-5 km dýpið
- undir Suðuroy liggur á meir enn 6-7 km dýpið

Seismisku kanningarnar geva ábendingar um at sedimentir, eins og í Grønlandi, liggja undir basalt sekvensinum, tvs. omaná grundfjallinum.

