



European  
Commission

# MSCA Work Programme 2018-2020:

What's new?

## New financial support: MSCA Special needs

### What?

Additional financial support to enable MSCA participation and mobility of disabled researchers

### Which MSCA actions are concerned?

All MSCA actions

### Who can benefit from this allowance?

Only eligible MSCA researchers with disabilities

### Type of grant?

Grant awarded for the purchase of items/services

- > Lump sum grant to beneficiary
- > Capped at EUR 60 000/researcher

### How will it be implemented?

As a separate grant to the beneficiary of the main MSCA grant

### From when?

Tentatively available as of Q1 2019 (retroactively to all ongoing projects)



Modification of the Country Correction Coefficient



Increase by 5% of the living and top-up allowances



### Optional introductory training for all MSCA fellows



- > **Training on skills** necessary to face the challenges of tomorrow (such as digital-enabled open science and FAIR data management, responsible research and innovation, communication and outreach, project management).
- > **Information on their career** as MSCA researchers (rights and obligations as fellows, EU support for innovation, possibilities for worldwide collaboration).

### More flexibility for third-country researchers through a revised long-term residency rule\*:

- > **Only residence counts**, and not research activity and residence as before.
- > **Periods of absence are now allowed** during the 5 years of legal and continuous residence within EU Member States or Horizon 2020 Associated Countries.
- > **Refugees**, even though they are third-country citizens, **do not have to comply with the long-term residency rule when applying to the Reintegration Panel.**



\* In line with the Council Directive 2003/109/EC of 25 November 2003 concerning the status of third-country nationals who are long-term residents.

## 2018-2020 changes by MSCA action

### ITN



- 1 Cover costs for short secondments (up to 6 months) of researchers in ITN with the Research, Training and Networking costs
  - > Should cover at least **travel and accommodation costs**.
- 2 Revised rule on international mobility in European Industrial Doctorates (EIDs)
  - > Inter-sectoral mobility between beneficiaries **must be international**.
  - > Mobility to partner organisations is aligned with standard European Training Network (ETN) rules: **limited to 30%; can be international or not**.
- 3 European Joint Doctorates (EJDs): Researchers must take their joint degree always within Europe or with a European beneficiary

### IF



- 1 IF Career Restart Panel (CAR) and Reintegration Panel (RI) are strengthened
  - > Maximum duration of **CAR prolonged to 36 months**.
  - > **More budget** for both panels.
- 2 Part-time work for IF to pursue supplementary activities, such as creating a business, advanced studies, etc.
  - > **Agreement between supervisor and fellow** necessary.
  - > Minimum working time in MSCA: **≥50%**.
  - > **Proportional extension** of project.
- 3 Possibility to spend time at the European beneficiary before the outgoing mobility
  - > **Max. 3 months** (part of outgoing phase to ensure knowledge transfer when back).

### RISE

- 1 Less strict eligibility criteria for secondments
  - > Staff members to be linked to the sending institution **one month** before the first period of secondment.
  - > More **flexibility** and **more secondments**.

### COFUND



- 1 Indicate the minimum gross salary in **vacancy announcements** to ensure transparency

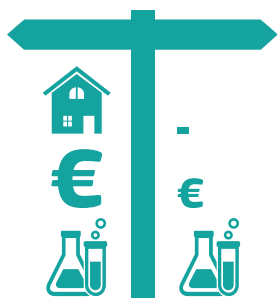
### NIGHT



- 1 Possibility to organise **pre-events during spring or summer** prior to the main event in September

## Widening Fellowships

### Context



The results from the first years of Horizon 2020 implementation reveal the existence of a **Research & Innovation gap across Europe** and **discrepancies between European countries in their ability to attract excellent researchers**.

Widening countries tend to apply less, coordinate fewer projects and have a higher share of rejected proposals.

However, all Widening countries have many proposals above quality threshold and **a majority of widening countries have excellent (very high-scoring) proposals not funded due to lack of budget**.

### What?

**Specific support to researchers to undertake their fellowship in a Widening country.** This will help spread excellence and widen participation within Horizon 2020.

### How will it be implemented?

Through the **Spreading Excellence and Widening Participation** part of the **Horizon 2020 Work Programme** in line with the high-quality standards and benefits of the MSCA Individual Fellowships.

### Who can benefit from the widening fellowship?

Researchers applying for an MSCA European Fellowship in Widening countries, be it a Standard, Society & Enterprise, Career Restart or Reintegration Fellowship. Proposals above quality threshold but not retained for funding through the MSCA Individual Fellowship call with a host institution in a Widening country will be automatically reassigned to the Widening Fellowships call (unless the applicants explicitly opted-out).

### Which countries are concerned?



**Member States:** Bulgaria, Croatia, Cyprus, Czech Republic, Estonia, Hungary, Latvia, Lithuania, Luxembourg, Malta, Poland, Portugal, Romania, Slovakia and Slovenia.

**Associated Countries:** Albania, Armenia, Bosnia and Herzegovina, Faroe Islands, Former Yugoslav Republic of Macedonia, Georgia, Moldova, Montenegro, Serbia, Tunisia, Turkey and Ukraine.

### Budget



2018: EUR 5 million  
2019: EUR 6 million  
2020: EUR 7 million

### Who will implement this action?

Research Executive Agency (REA)