



POLITISK LEIÐSLA OG SAMSKIFTI Í UNDANTAKSSTØÐU

Hvussu Føroyar loftaðu koronakreppuni

RÓGVI OLAVSON, FRÓÐSKAPARSETUR FØROYA, 6. NOVEMBER 2020

Tillukku allir føroyingar

Løgmaður ynskir í morgun øllum føroyingum tillukku, nú eingin er smittaður við korona í Føroyum

Rólant Waag Dam





The image features five dark silhouettes of business professionals standing in a row against a light background with a fine, repeating dot pattern. From left to right: a man in a suit and tie, a man in a suit and tie holding a briefcase, a woman in a suit with her hand on her hip, a man in a suit and tie, and a woman in a suit. The text is centered over the silhouettes.

DUGNALIG ELLA HEPPIN?

ELLA BÆÐI?

DATA

- ALMENT SAMSKIFTI
- SKJØL FRÁ FYRISITINGINI
- SAMRØÐUR VIÐ FYRISITINGINA



FØROYAR SUM SKIPAN



FØROYAR SUM SAMFELAG

COVID19 Í FØROYUM

STÝRING

TAÐ, SUM VIT GERA FYRI AT
BASA EINI FARSÓTT

ÖNNUR VIÐURSKIFTI

UMSTØÐUR ELLA EGINLEIKAR Í
SAMFELAGNUM, SUM VÓRU
TIL FRAMMANUNDAN OG SUM
ÁVIRKA, HVUSSU EIN FARSÓTT
TRÍVIST

SMITTUSTÝRING

- LATA AFTUR
- ALMENT SAMSKIFTI
- MARKASTÝRING
- TESTING
- SMITTUSPORING
- HEILSUVERKIÐ

The image features a dark blue background with a fine, light-colored grid pattern. Several glowing lightbulbs are scattered across the scene, with one in the upper right being particularly prominent and brightly lit. The text "ONNUR VIÐURSKIFTI" is centered in a white, sans-serif font.

ONNUR VIÐURSKIFTI



theguardian



Veterinary scientist hailed for Faroe Islands' lack of Covid-19 deaths

Debes Christiansen adapted his salmon-testing lab to test for disease among humans



LANDAFRØÐI

A halftone-style illustration of a harbor scene. In the foreground, a wooden boat with a blue and red stripe is docked at a pier. The background shows a town with various buildings, including a prominent red building on the left and a tall, thin tower in the center. The sky is blue with some clouds. The entire image has a halftone dot pattern.

LÍÐ SAMFELAG

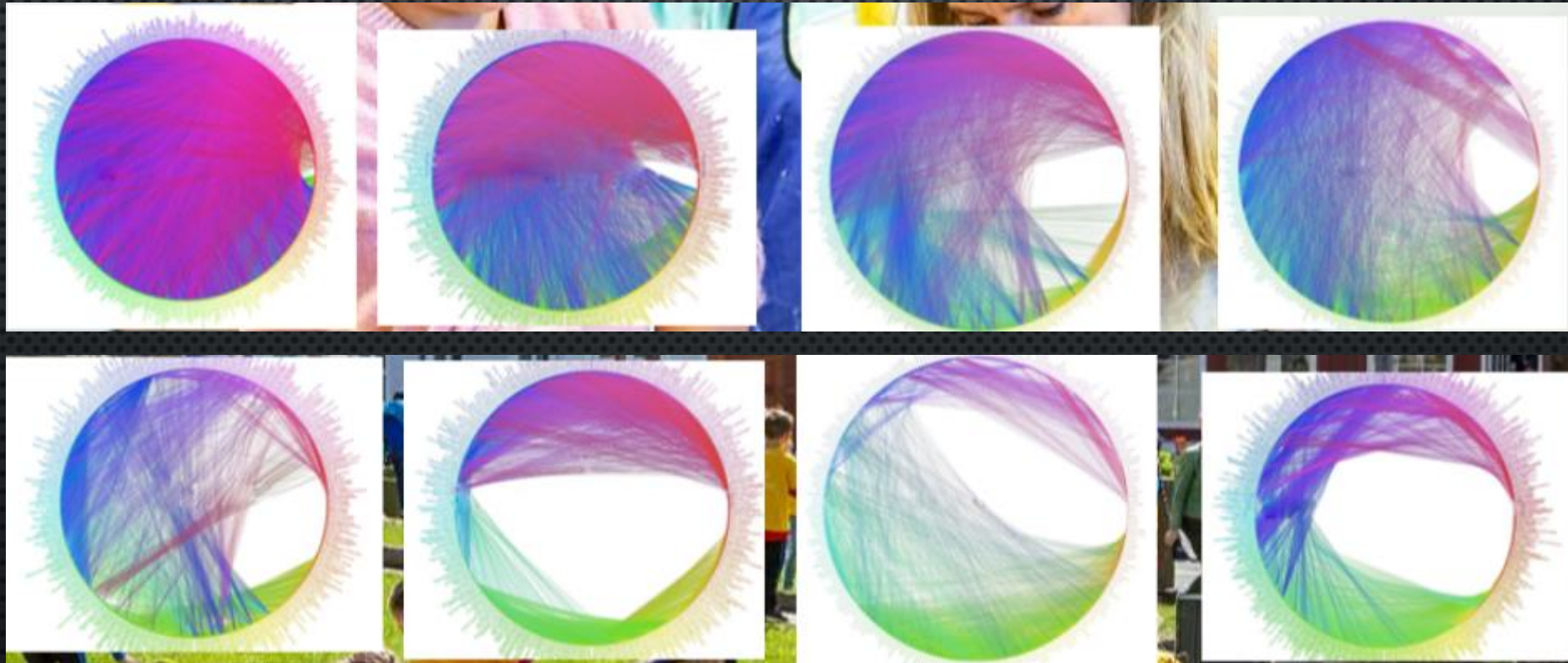
FERÐINGARVANAR

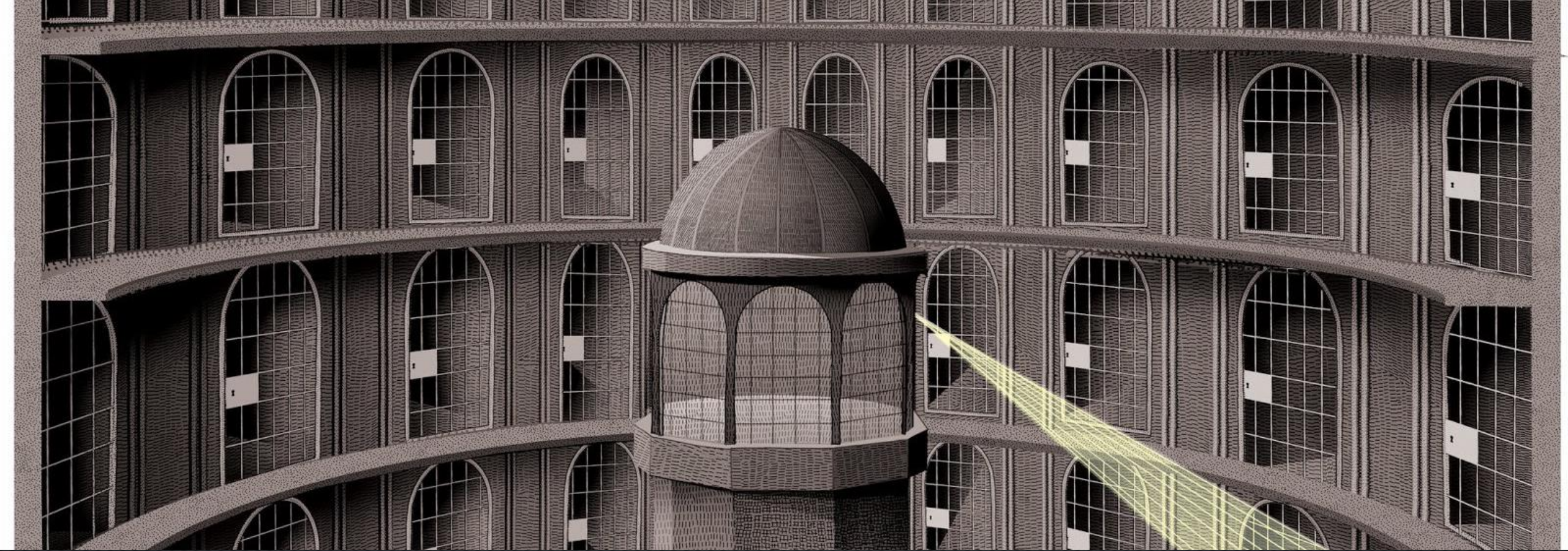


A group of people are sitting on a light-colored sofa. On the right side of the frame, a woman with long dark hair, wearing a bright blue sleeveless top, is smiling and looking towards the left. The rest of the group is mostly obscured by a dark, semi-transparent overlay. The text 'HØGUR KENDLEIKI' is centered over the image in a white, sans-serif font.

HØGUR KENDLEIKI

HØGUR KENDLEIKI





SOSIALT KONTROL

ALMENNA UPPLÝSINGIN

FØROYAR LATA MEIRA UPPI

Eingir festivolar verða í juli
ella august, og ólavsøkan
verður sárvísi enn vanligi.

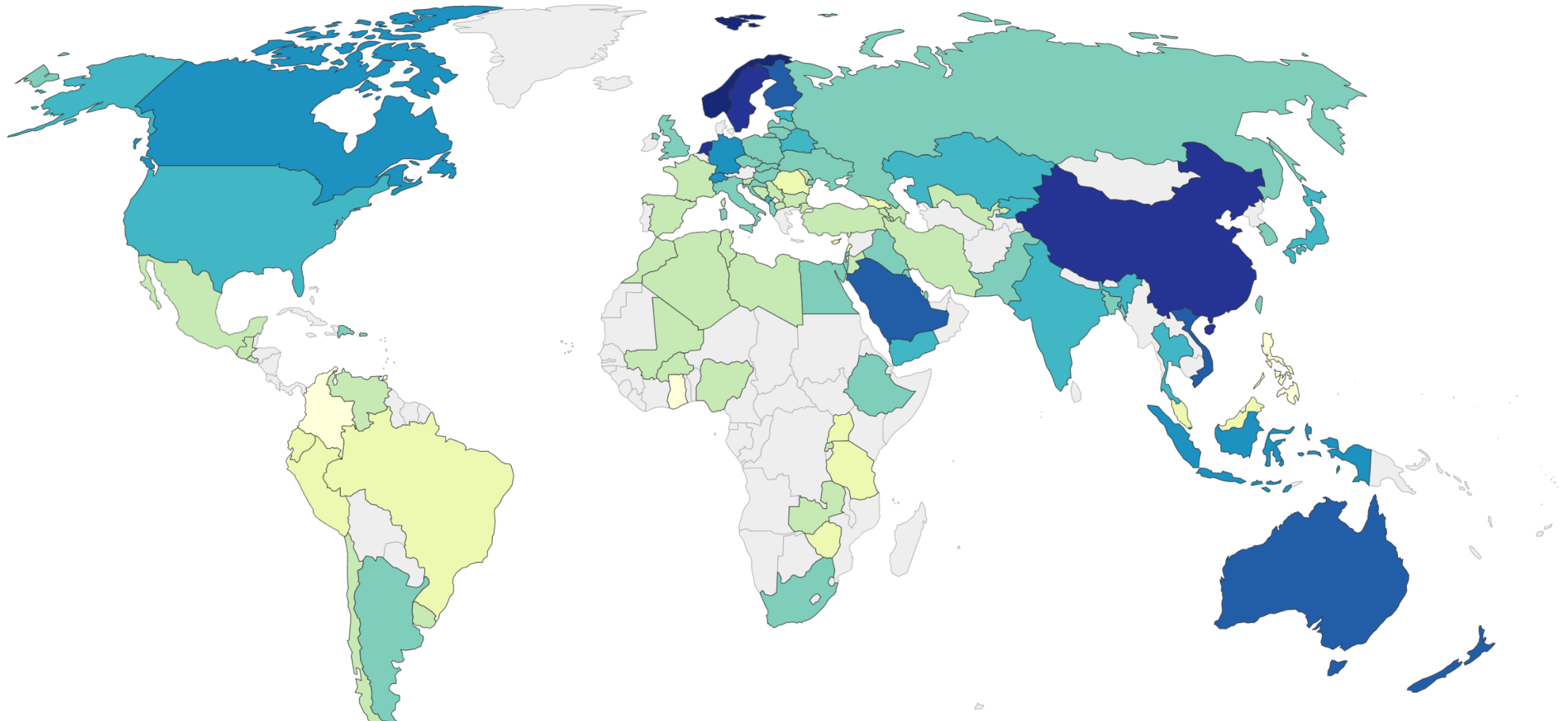
A photograph of a group of people in a social setting, overlaid with a dark grid pattern. The word "ÁLIT" is centered in white text.

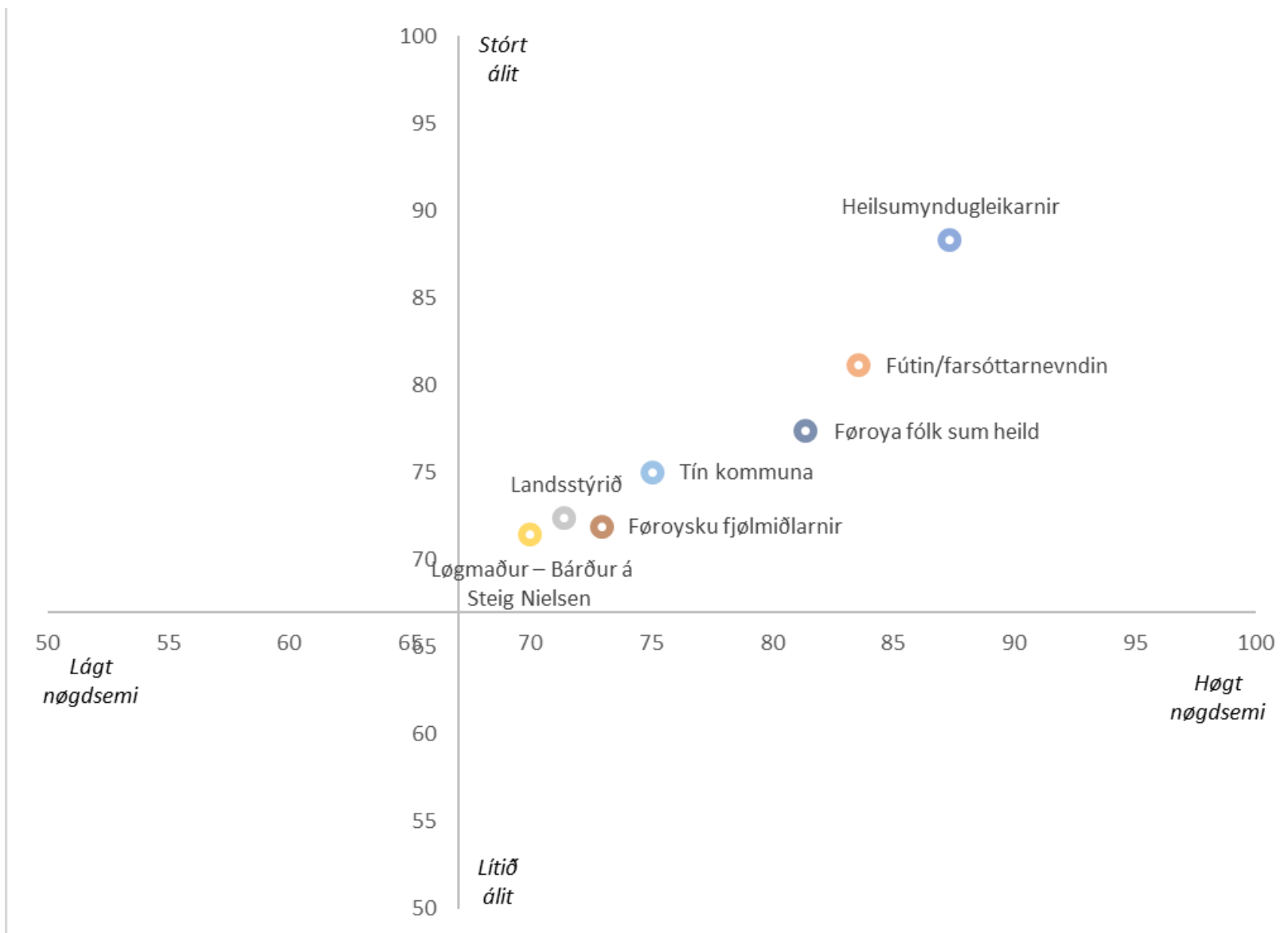
ÁLIT

Share of people agreeing with the statement "most people can be trusted", 2014

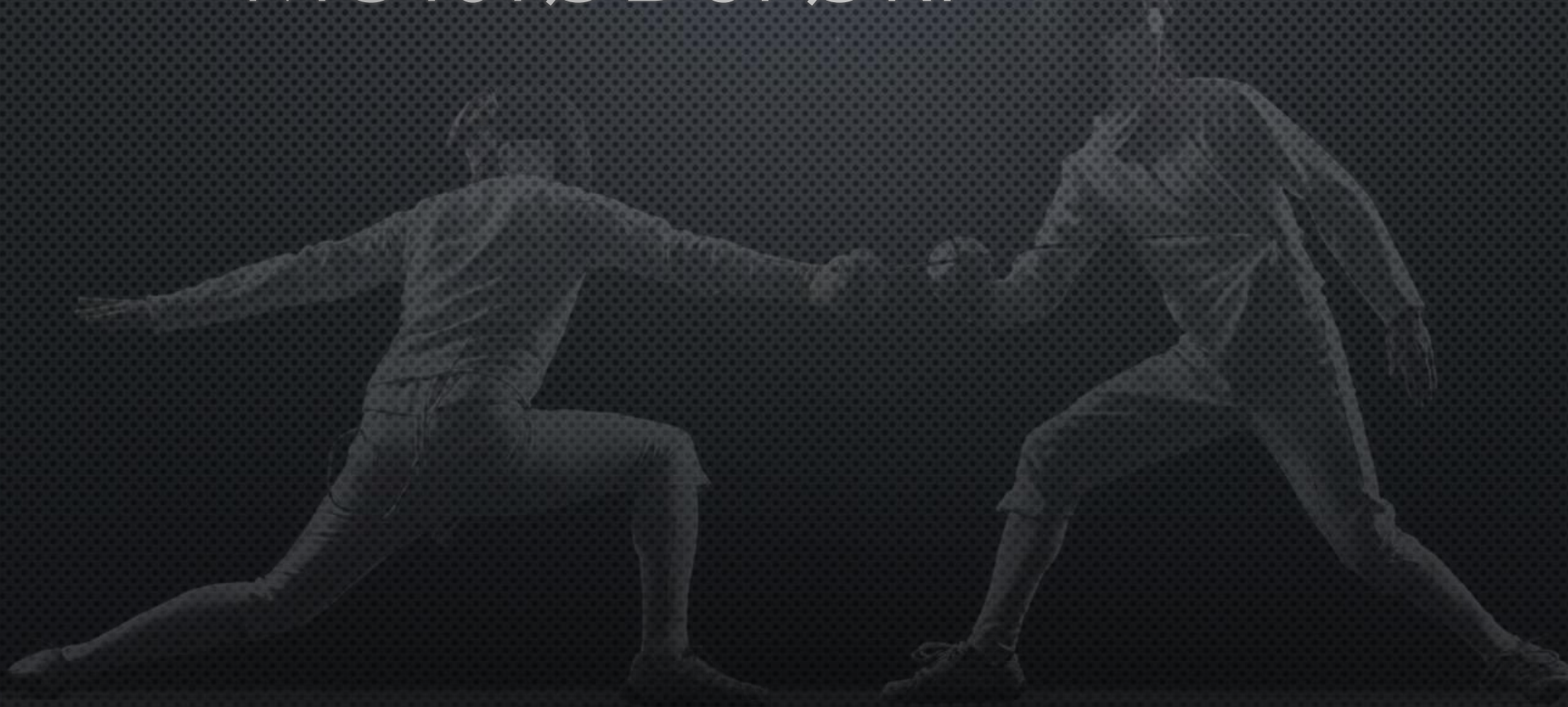
The survey question was "Generally speaking, would you say that most people can be trusted or that you need to be very careful in dealing with people?"

Possible answers were "Most people can be trusted", "Don't know" and "Can't be too careful".





SAMFELAGSLIGT MÓTSTØÐUFØRI





NIÐURSTØÐUR OG HYPOTESUR

- IKKI BARA DUGNASEMI
- EISINI SAMFELAGSLIGT MÓTSTØÐUFØRI
- SAMANSETTAR ORSØKIR TIL (HIGARTIL)
VÆLEYDNAÐU KORONASTÝRINGINA
- KUNNU VIT PLANLEGGJA OG HJÚKLA UM
SAMFELAGSLIGA MÓTSTØÐUFØRIÐ?