

# Livilíkindini hjá føroyska toskaynglinum

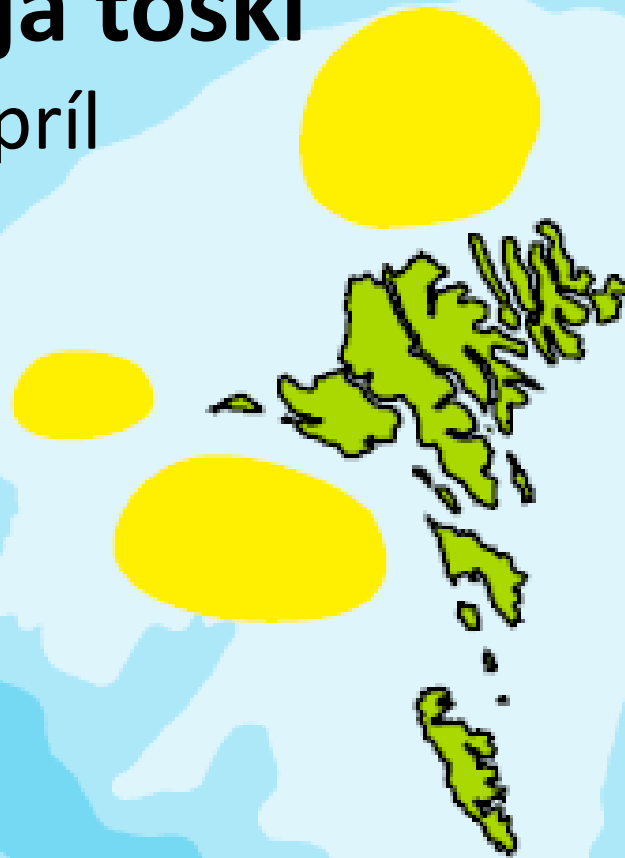
Sólvá Jacobsen



**HAVSTOVAN**  
FAROE MARINE RESEARCH INSTITUTE

# Gýtingarøki hjá toski

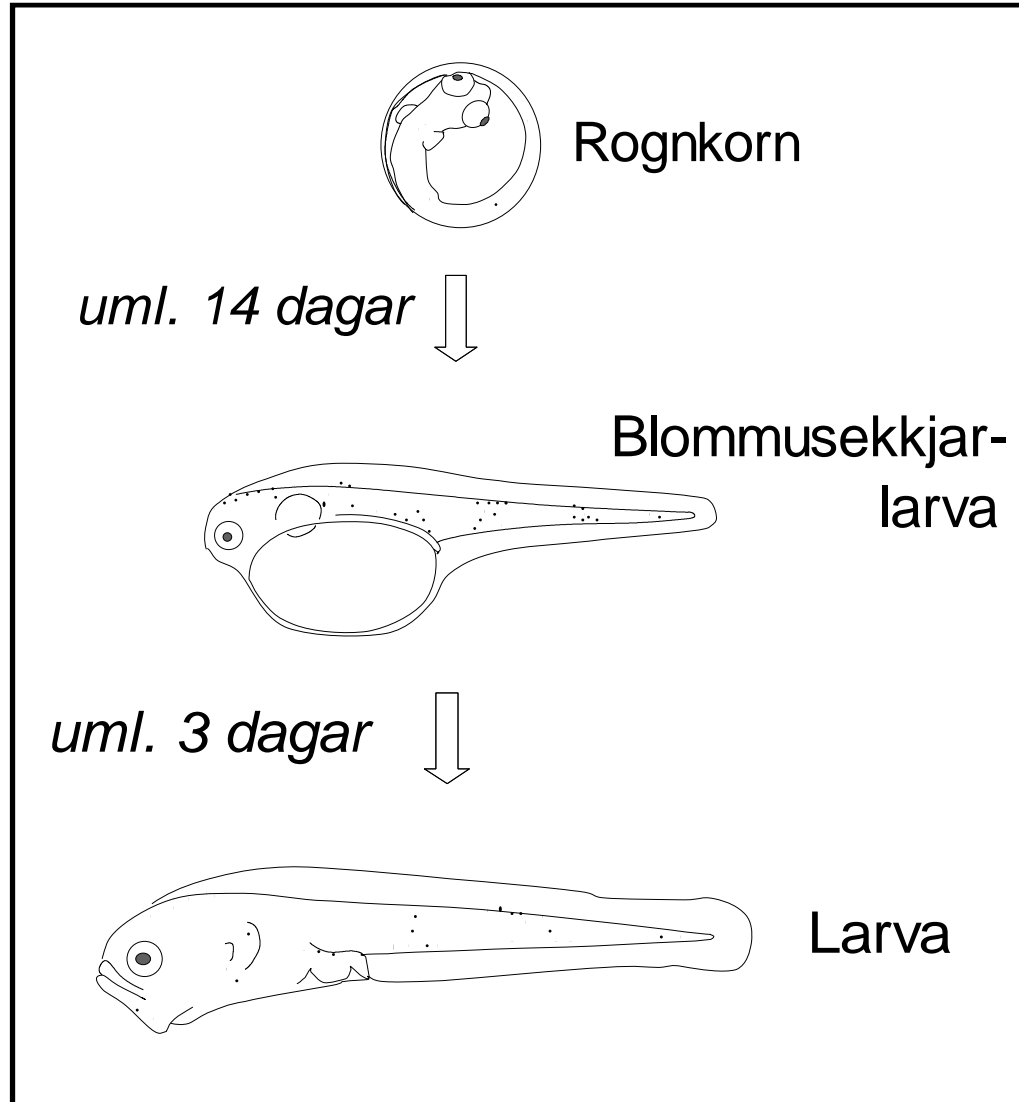
Gýting: februar-apríl



Honin gýtir:

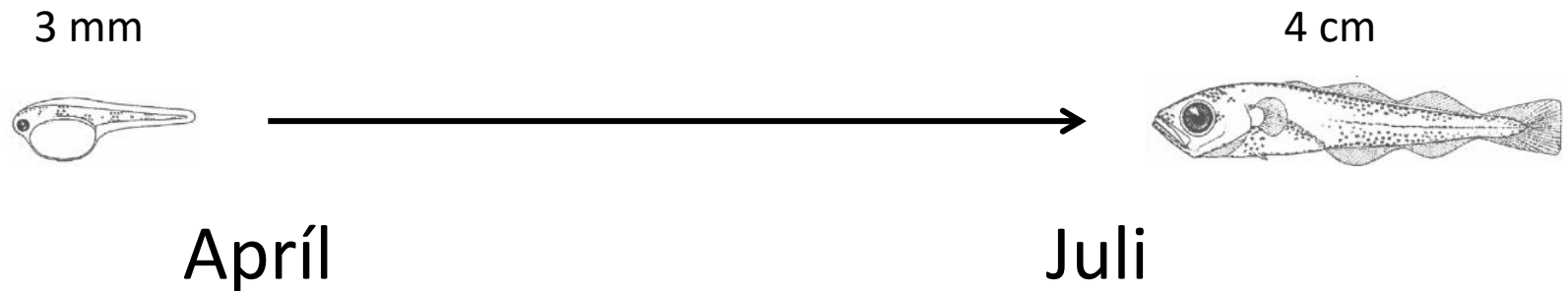
- 5-10 ferðir/sesong
- 500.000 egg/kg

# Búning frá rognkorni til fiskalarvu



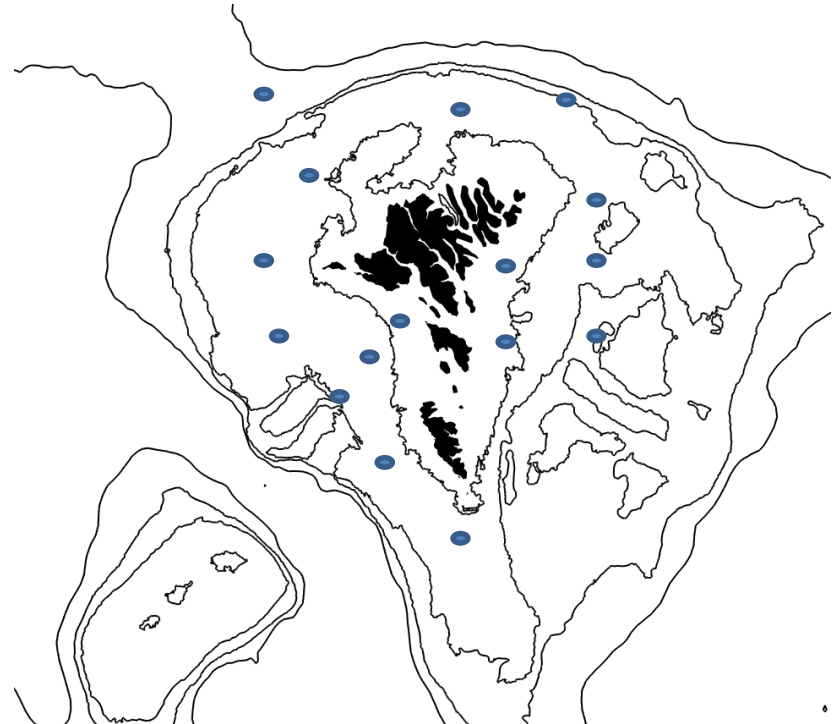
# Fyrsta livitíðin hjá toski

- Fyrstu ~3 mör. av livitíðini er toskurin ein partur av ætinum
- Hann livir uppi í sjónum, har hann etur djóraæti
- > 99% av ynglinum doyr fyrstu livitíðina



# Tilfar

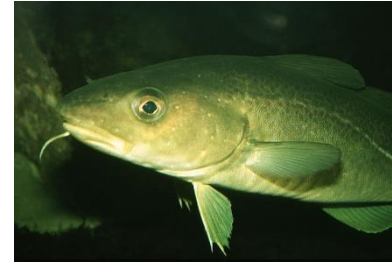
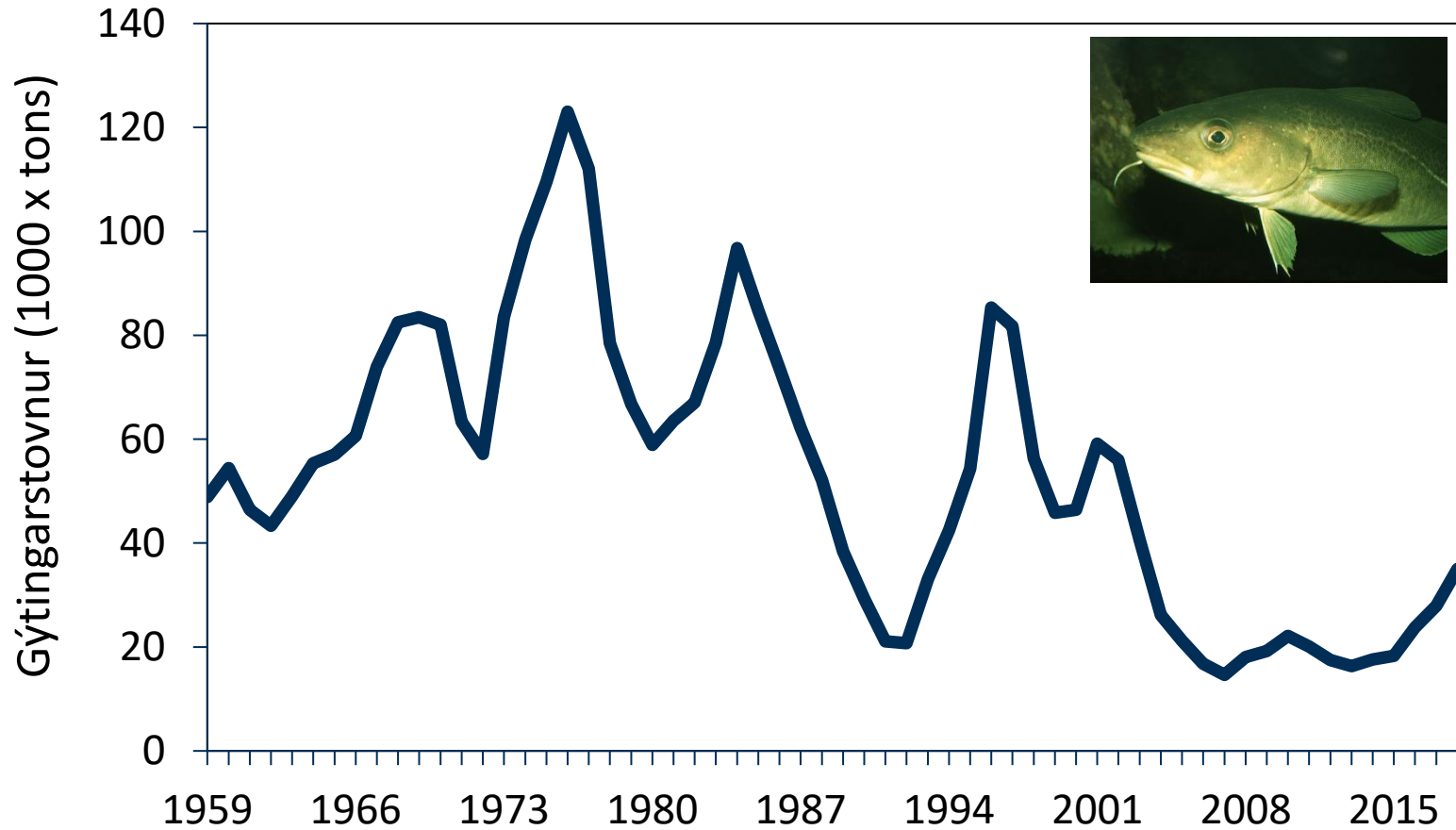
- Æti og fiskalarvur savnaðir inn síðst í apríl síðani 1997
- Æti og fiskayngul savna inn í seinnu helvt av juni síðani 1983



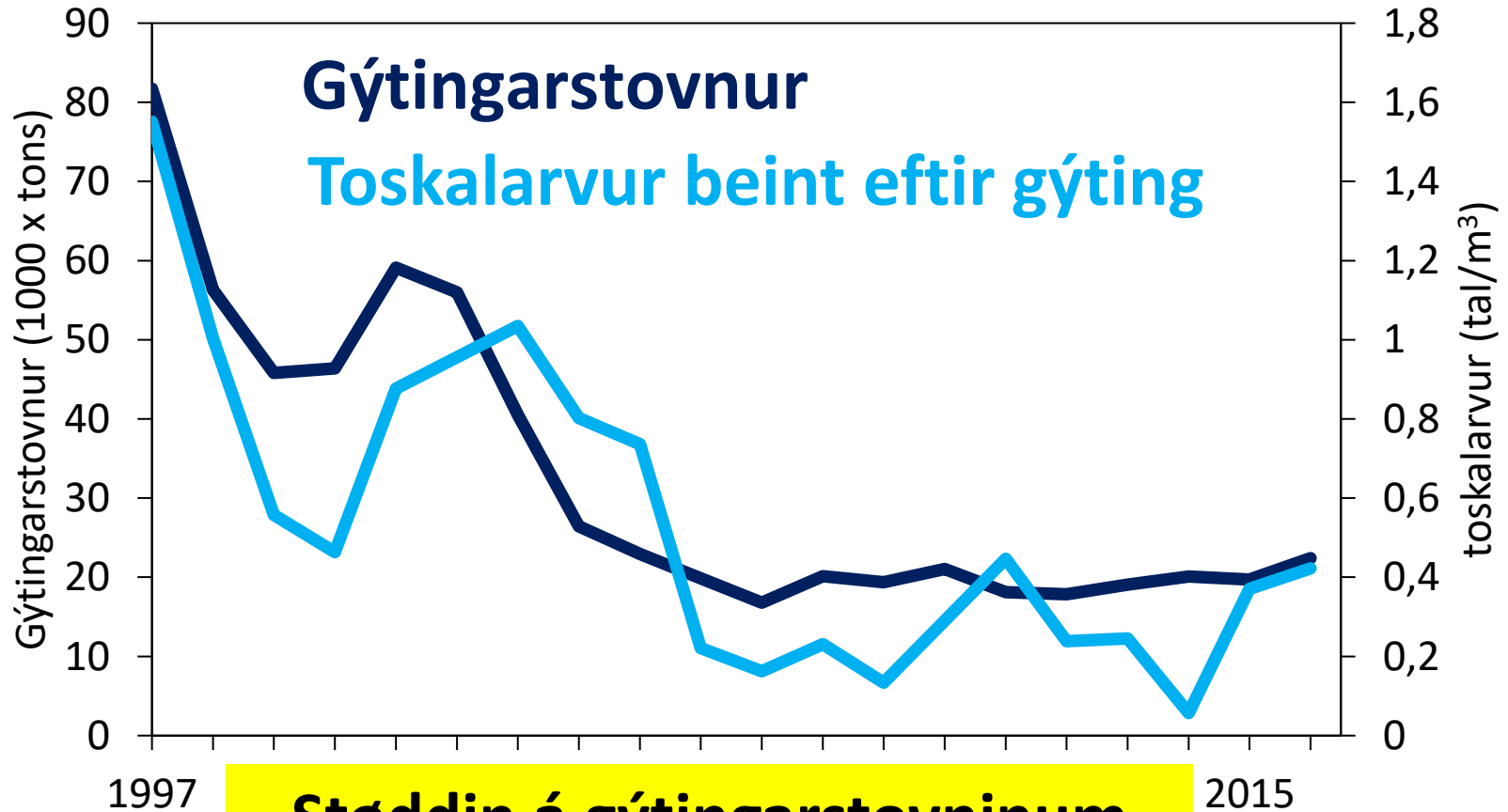
# Livilíkindini hjá toskaynglinum

- Burðardyggur gýtingarstovnur
- Føði til toskayngulin

# Gýtingarstovnurin hjá toski



# Gýtingarstovnurin og tal av larvum beint eftir gýting

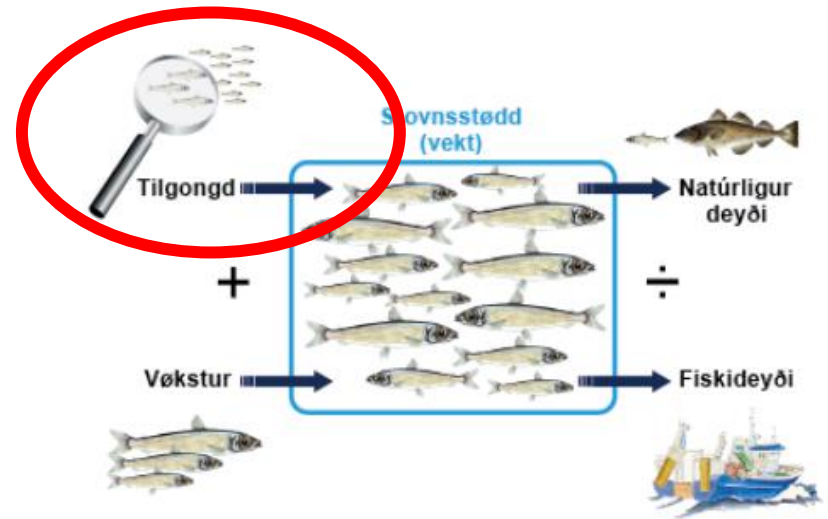
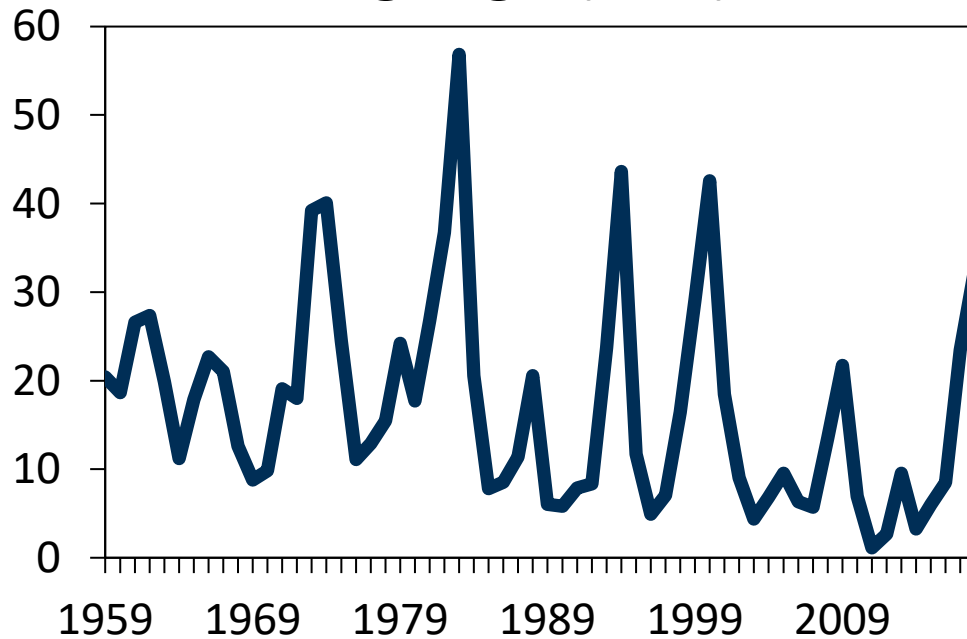


**Støddin á gýtingarstovninum  
hefur týdning fyri tilgongdina**



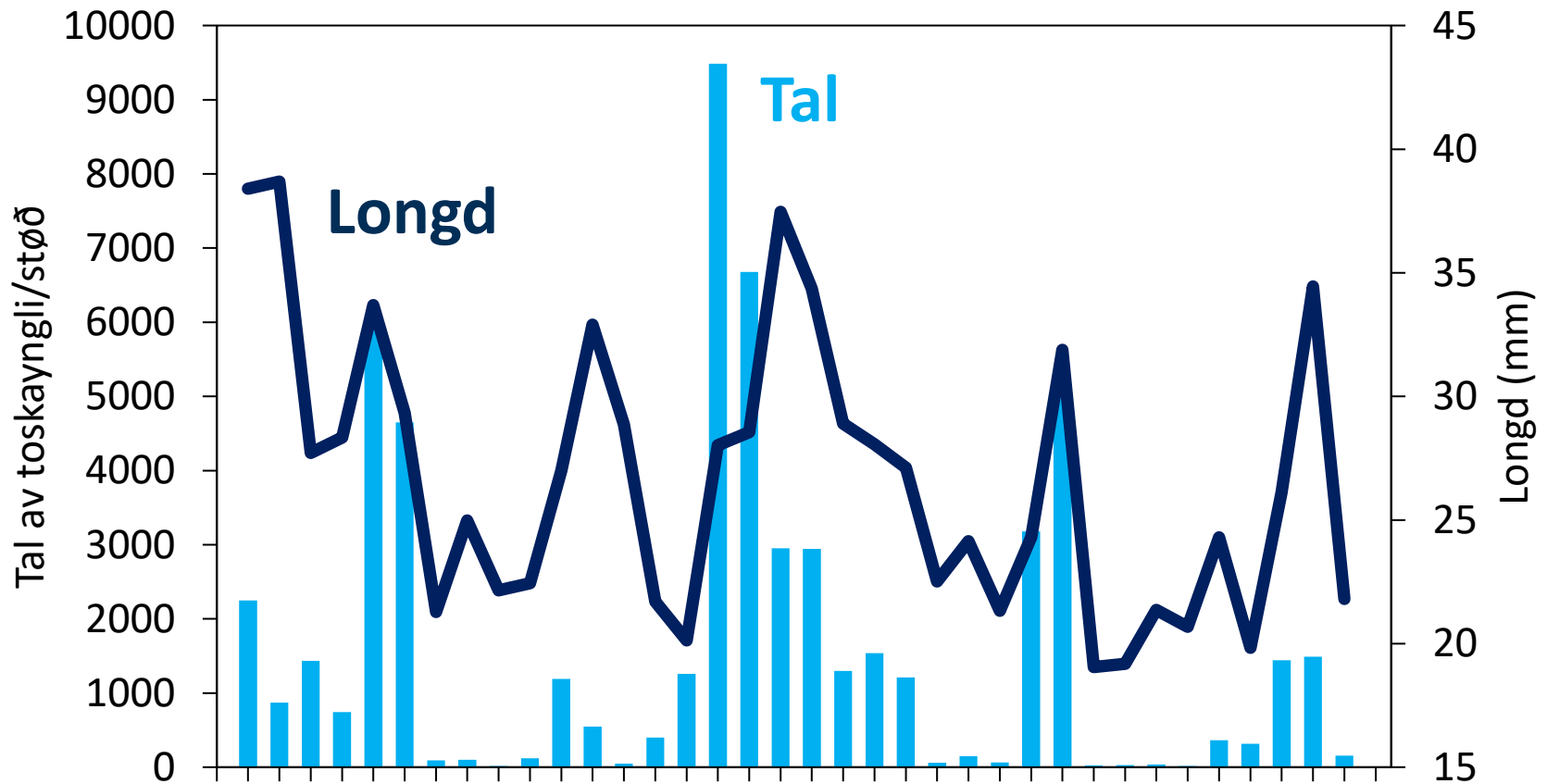
# Hví er stöðdin á toskastovninum so óstöðug?

Tilgongd (mió)



**Hvussu ávirkar gróður yngulin?**

# Nøgð og stödd á toskayngli í juni

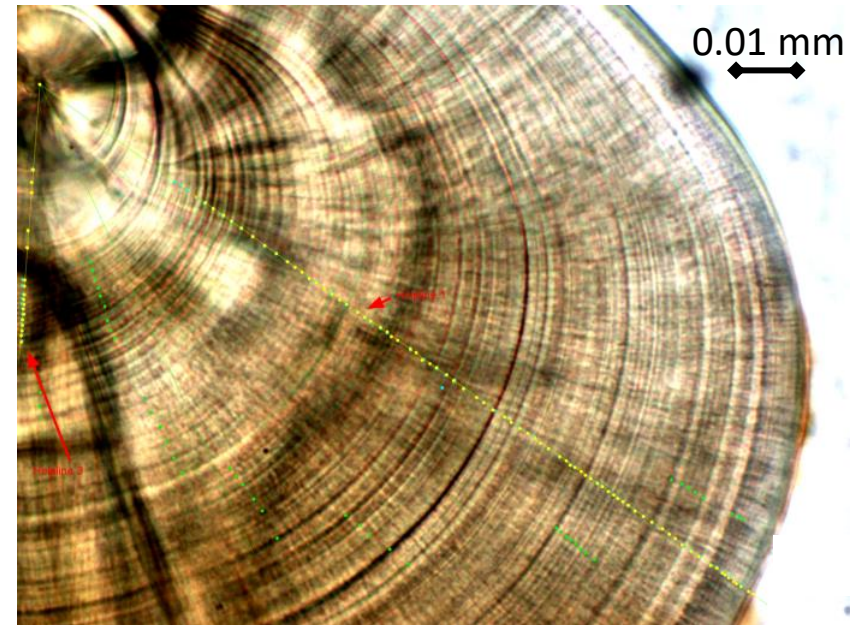


- Nøgðin og stöddin av yngli er sera skiftandi
- Tá nógv er til, er yngli ofta stórt og umvent

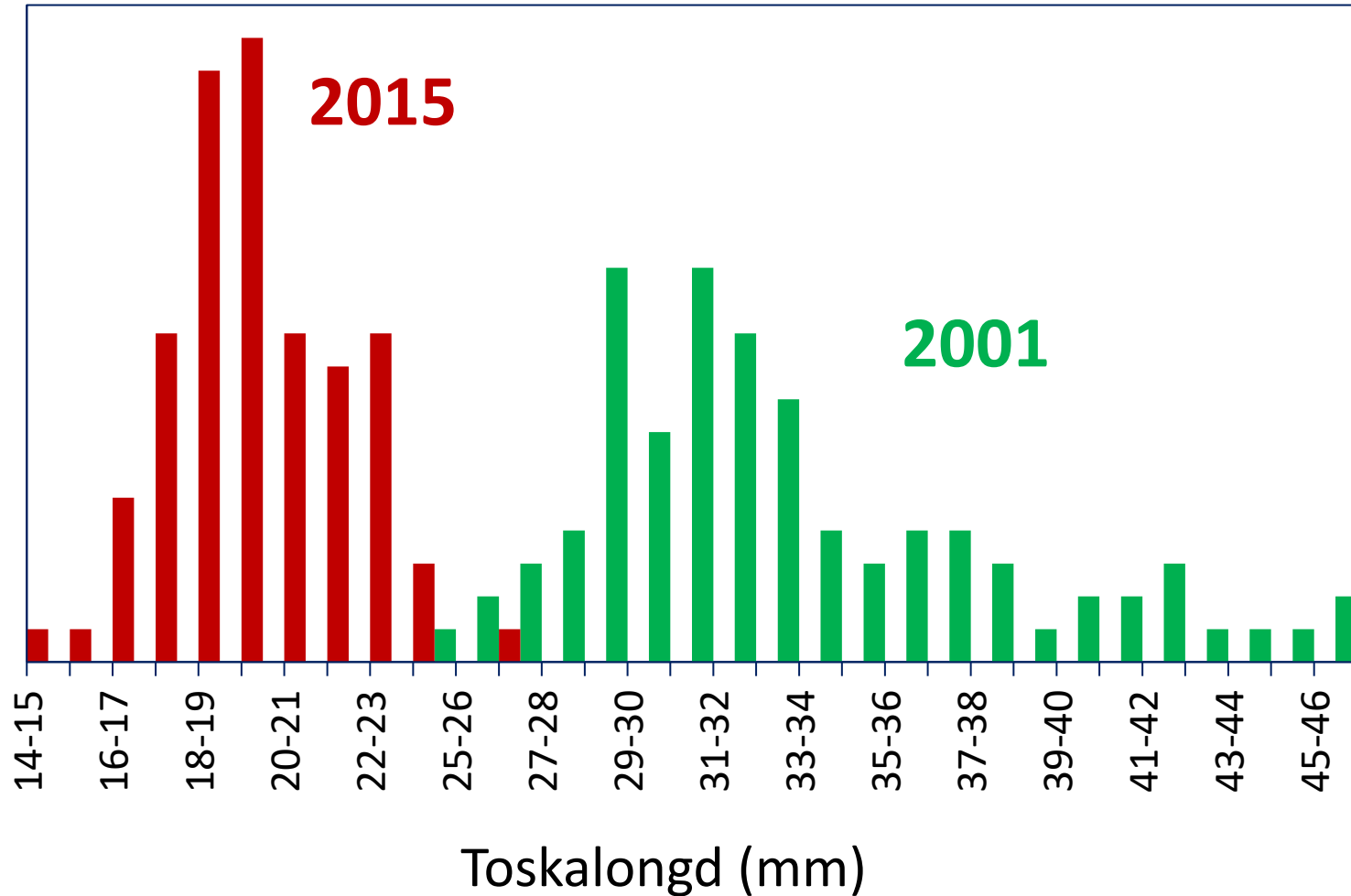
## Hví er nógdin og stöddin á yngli í juni skiftandi?

- i) vakstrarlíkindini eru betri summi ár enn onnur
- ii) aldurin á ynglinum er ymiskur frá einum ári til annað

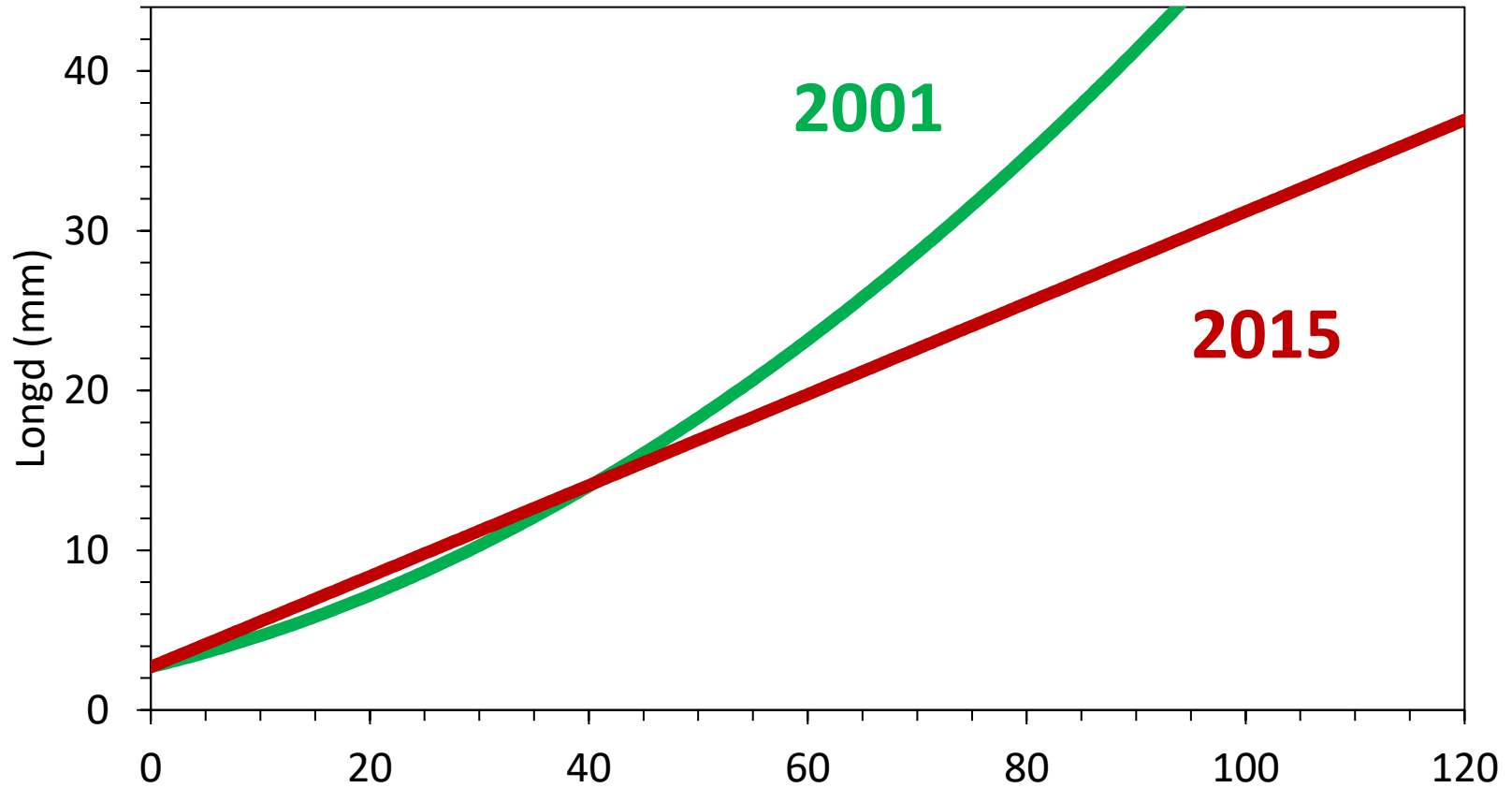
**Nytra frá toskayngli:**  
hvør ringur er 1 dagur



# Yngullongd í júní 2001 vs. 2015

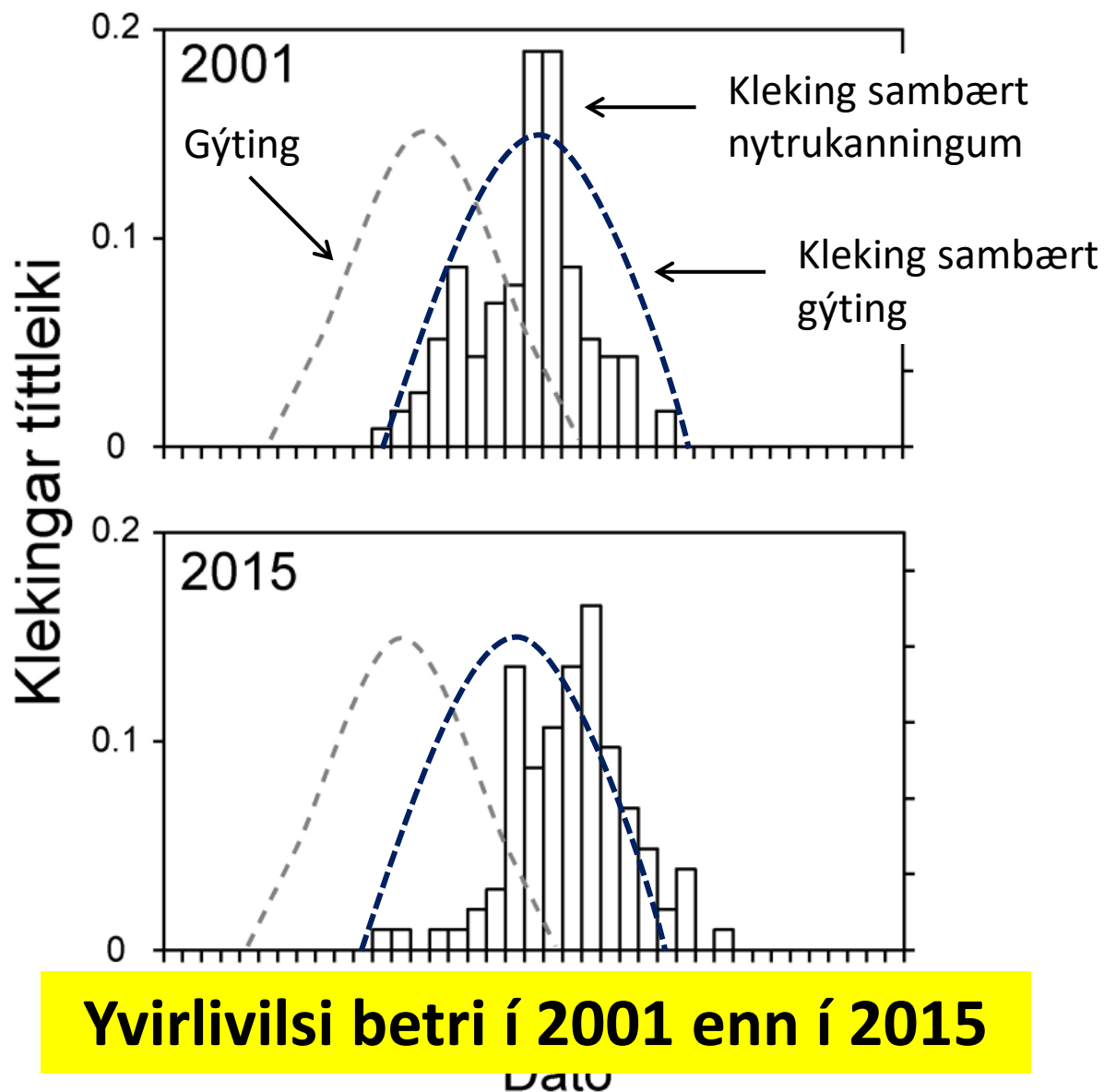


# Nytrুকanningar av toskayngli



**Væksturinn betri í 2001 enn í 2015**

# Nytrুকanningar av toskayngli

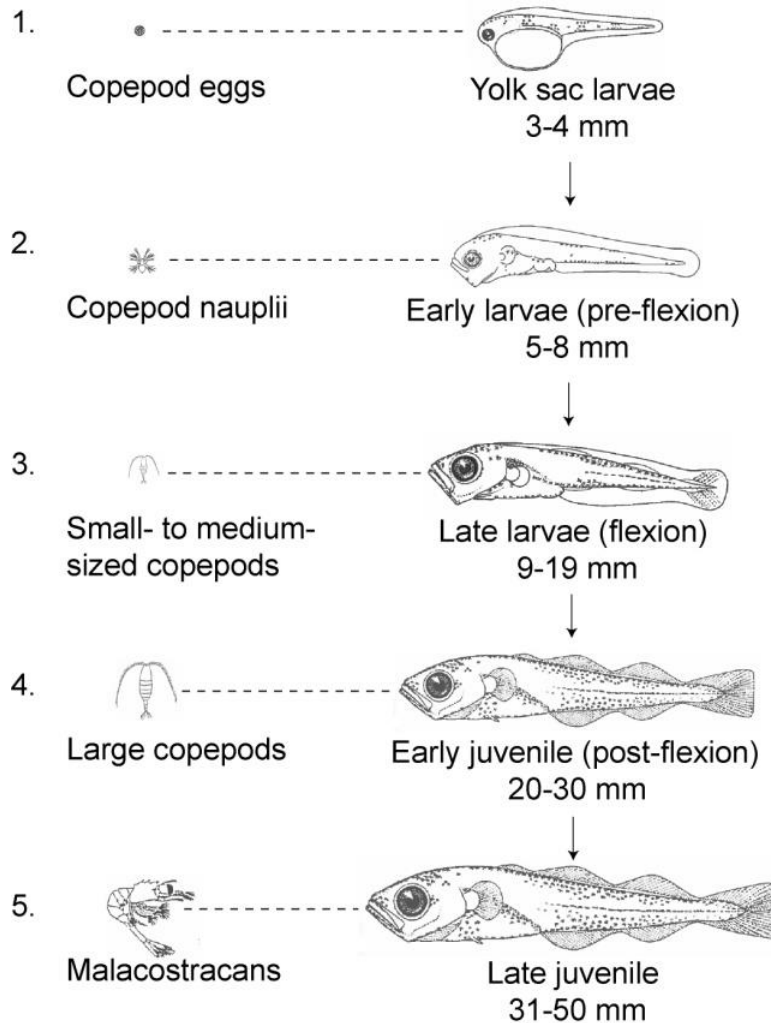


# Búning frá fiskalarvu til fiskayngul

Apríl



Juli





A microscopic view of a water sample containing various organisms. A large, translucent fish larva (Toskur) is visible in the upper left. A smaller, more developed fish larva (Nebbasild) is in the lower left. A large, segmented worm-like organism (Djóraæti frá í fjør) is in the center. Several smaller crustaceans (Ungar frá djóraæti) and numerous small, round eggs (Egg frá djóraæti) are scattered throughout the field of view. Labels with arrows point to these specific organisms.

Toskur

Ungar frá  
djóraæti

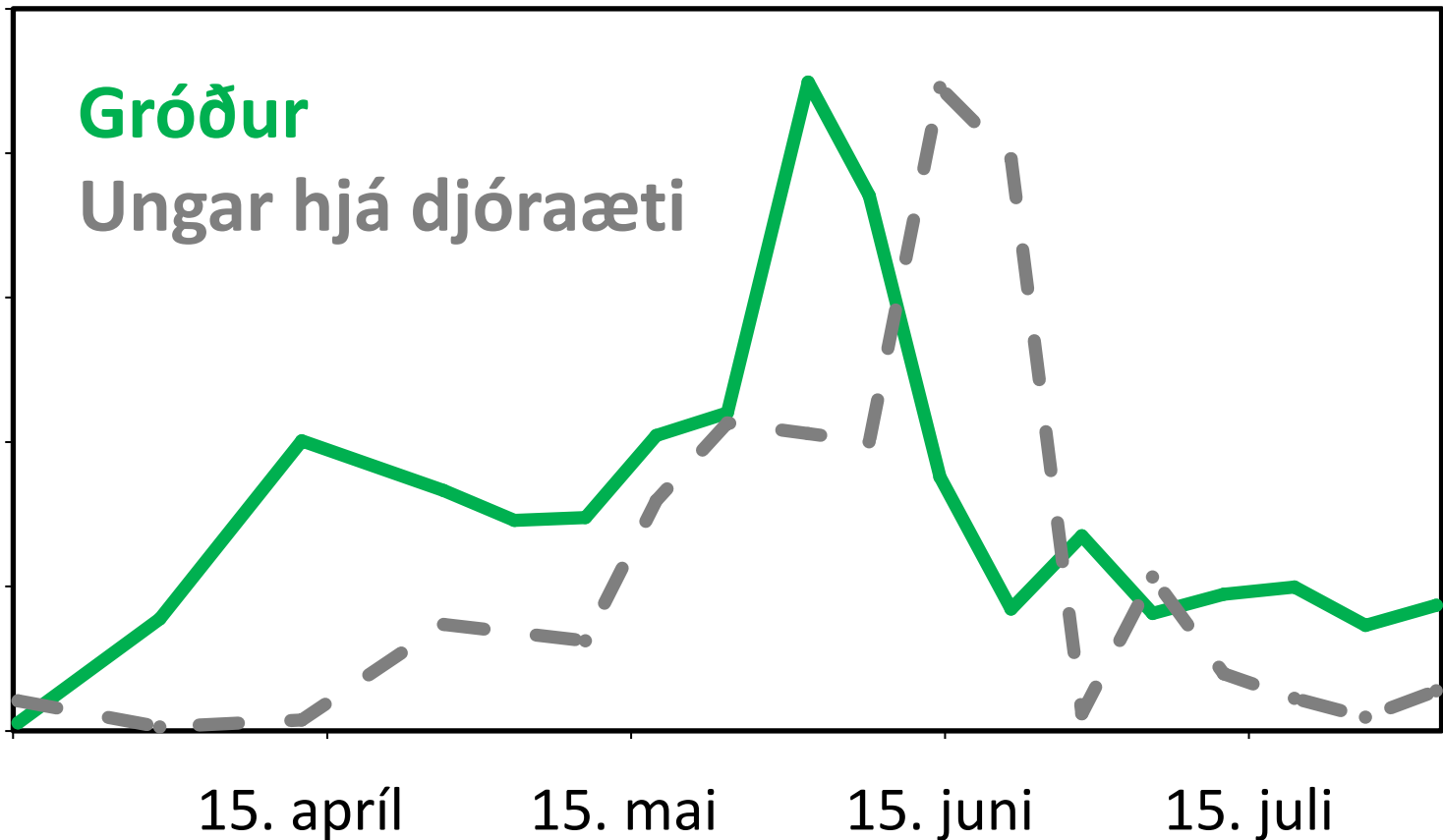
Egg frá  
djóraæti

Nebbasild

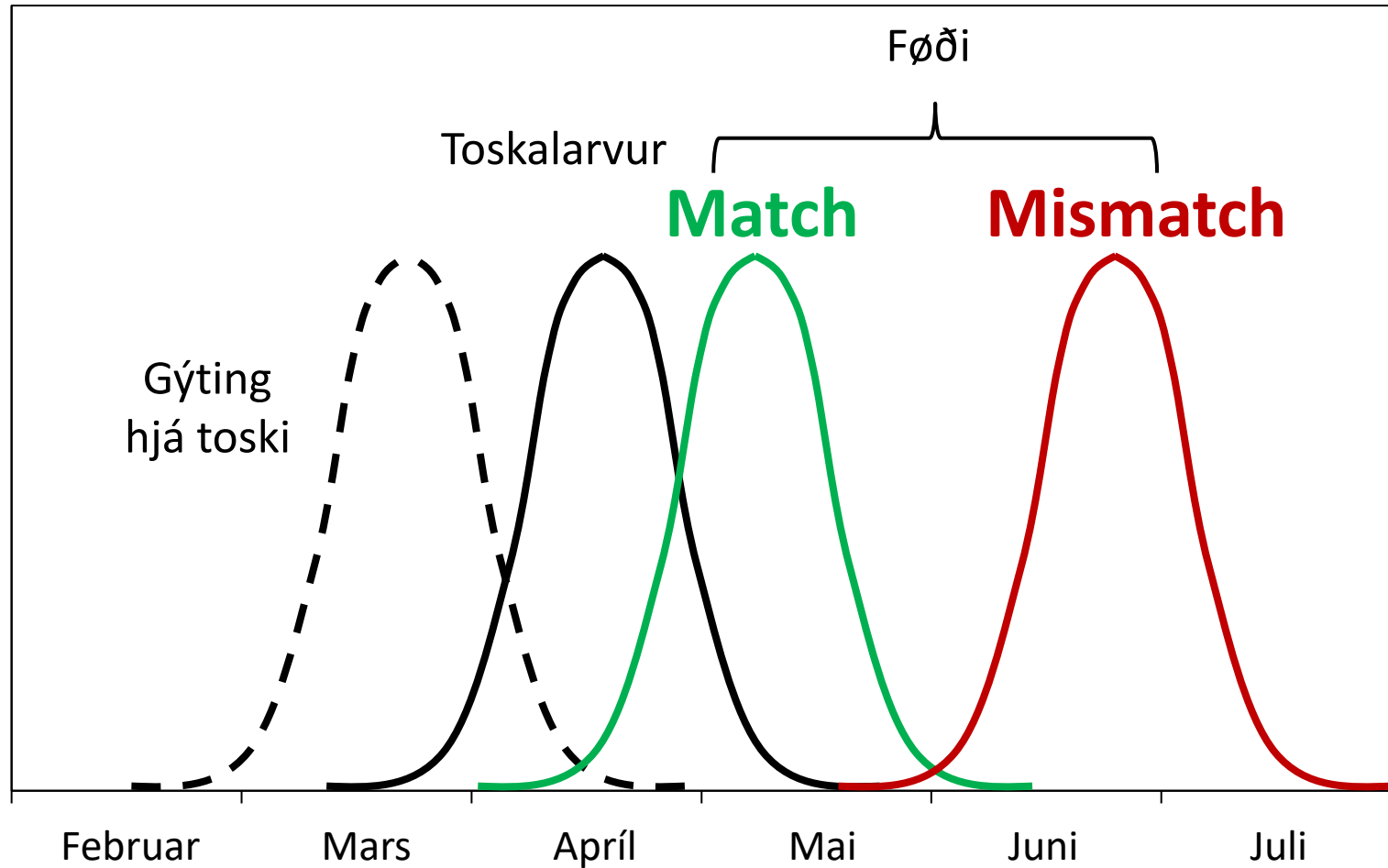
Djóraæti  
frá í fjør

**Fiskalarvur stutt eftir kleking  
og ymiskt djóraæti**

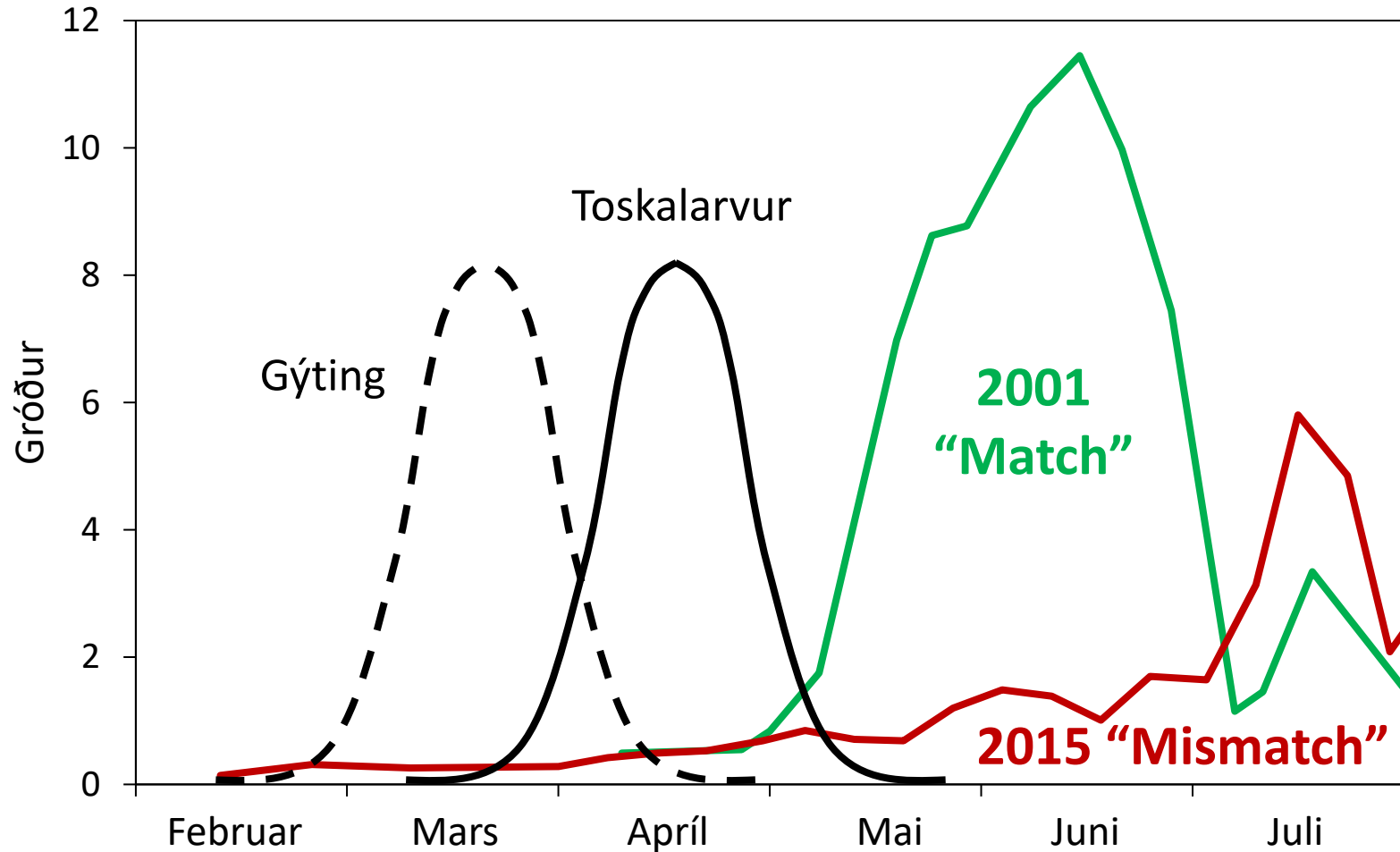
# Tá gróðurin er farin í gongd fer nøringin hjá djóraætinum í gongd



# “Match/mismatch” hypotesan

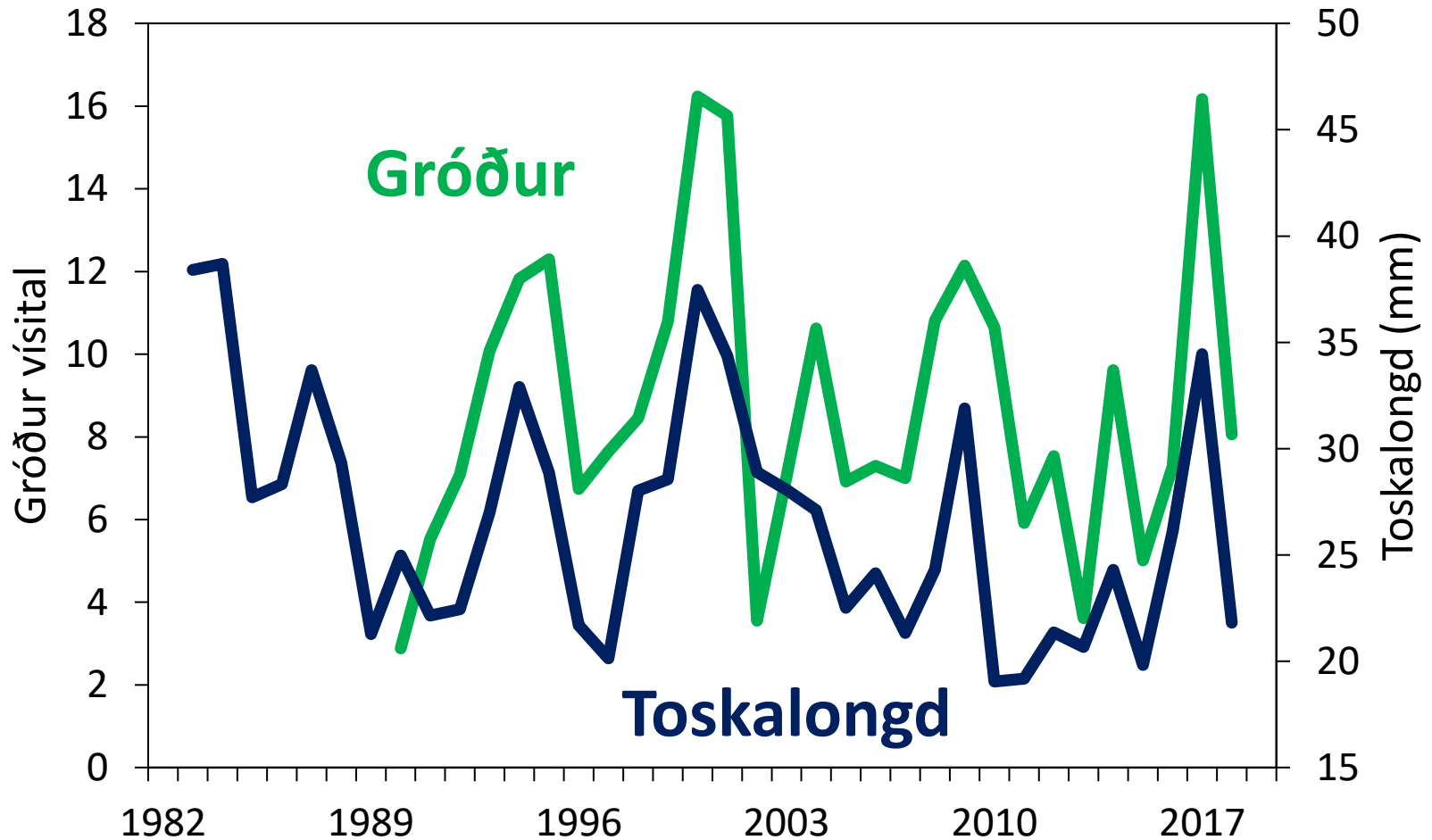


# “Match/mismatch” á Landgrunninum



“Timing” hefur týdning

# Toskayngul og gróður



**Gróðurin er avgerandi fyri góðan vøkstur og yvirlivlisi**

# Tøkk til:

