



Vísinda *vøka*
– á ferð

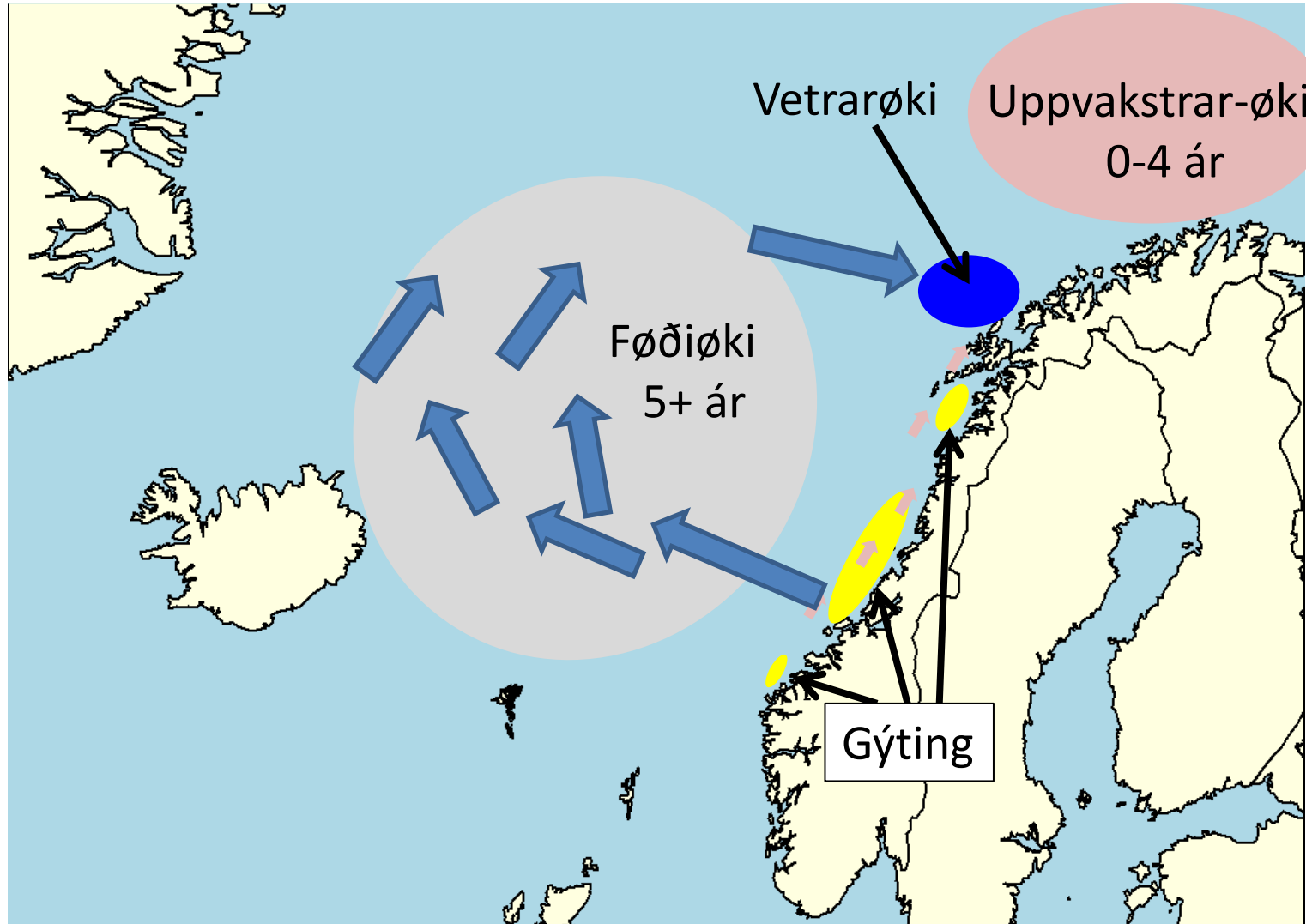
Sambandið ímillum sild, djóraæti og havfrøðiligar broytingar norðanfyri Føroyar í trý áratíggju



Inga Kristiansen
15/09/2022

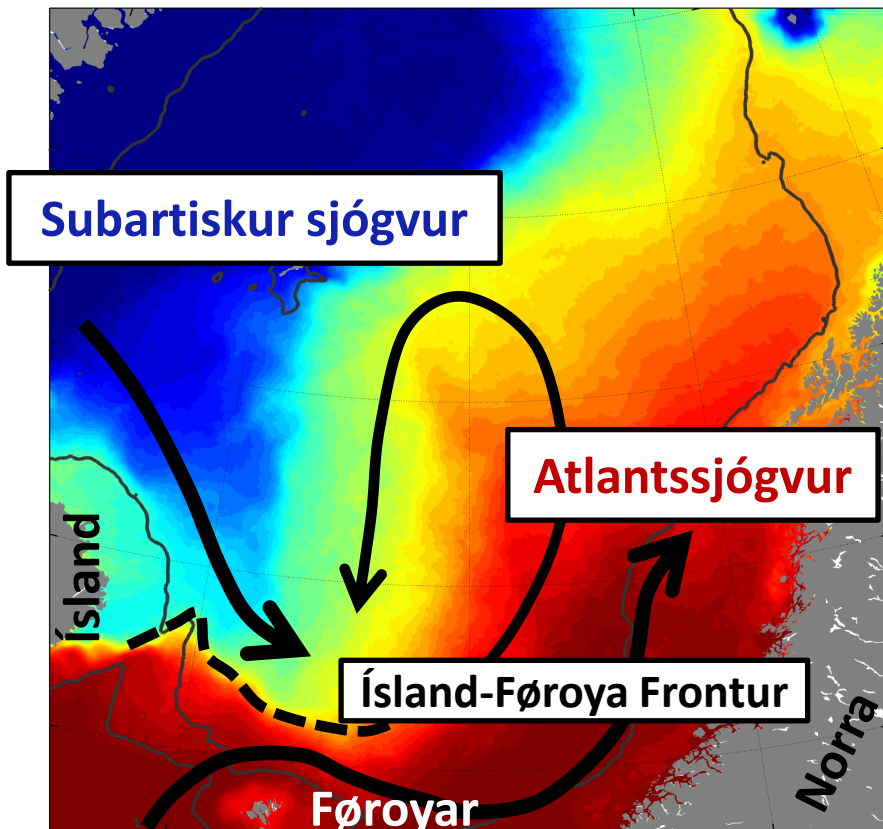


Lívsringrás og ferðingarmynstur



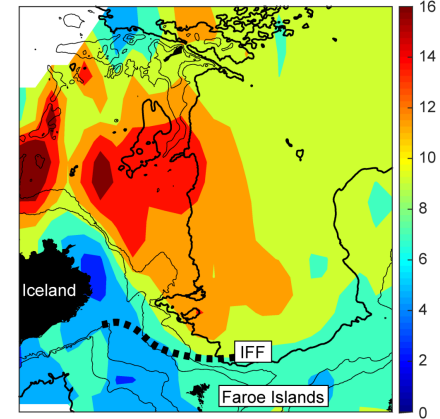
Umhvørvið

Sjóvarhiti á vatnskorpuni



Eliassen et al. (2021)

Umhvørvið



Subartiskur sjógvur

Atlantssjógvur

Skurð N

Kannað síðani 1993

Innsavnað data:

- Djóraæti
- Sjóvarhiti
- Saltinnihald

Skurð N

IFF

Føroyar

Eliassen et al. (2021)

Evni

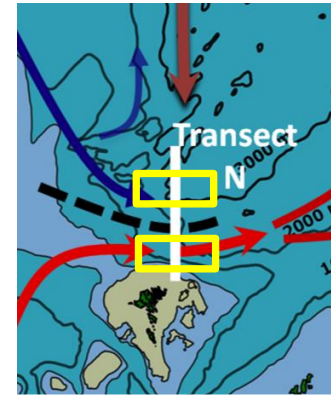
Vísinda) *vøka*



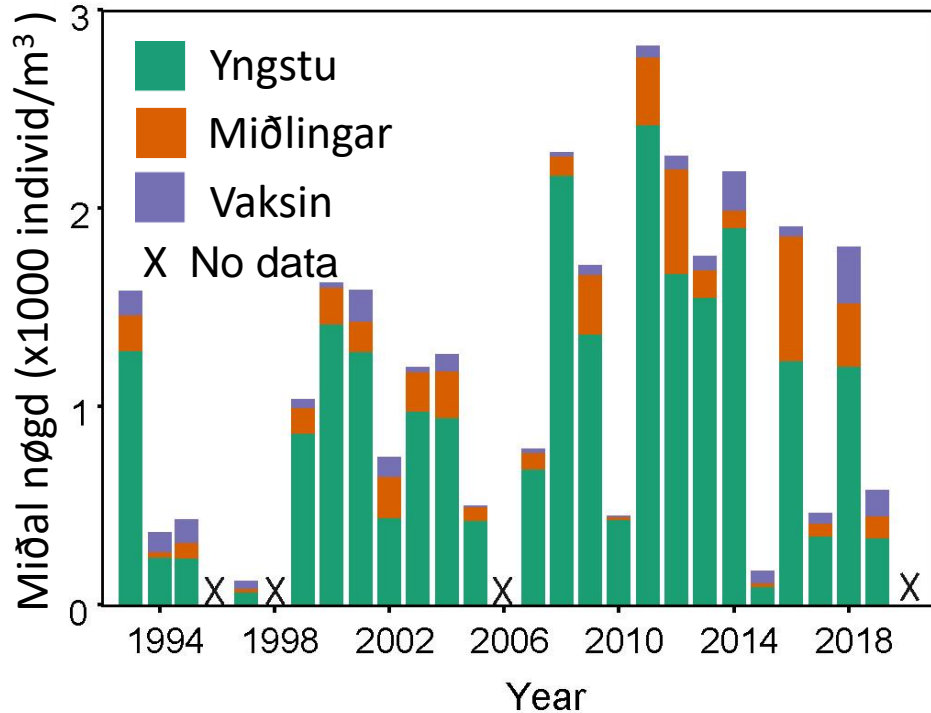
- Framløgan deild upp í 3 partar:
 - Djóraæti á Skurð N (1993-2020)
 - Havfrøðilig viðurskifti
 - Føðiviðurskifti hjá norðhavssild



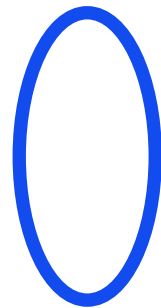
Cal fin samanseting í mai



Atlantssjógvur

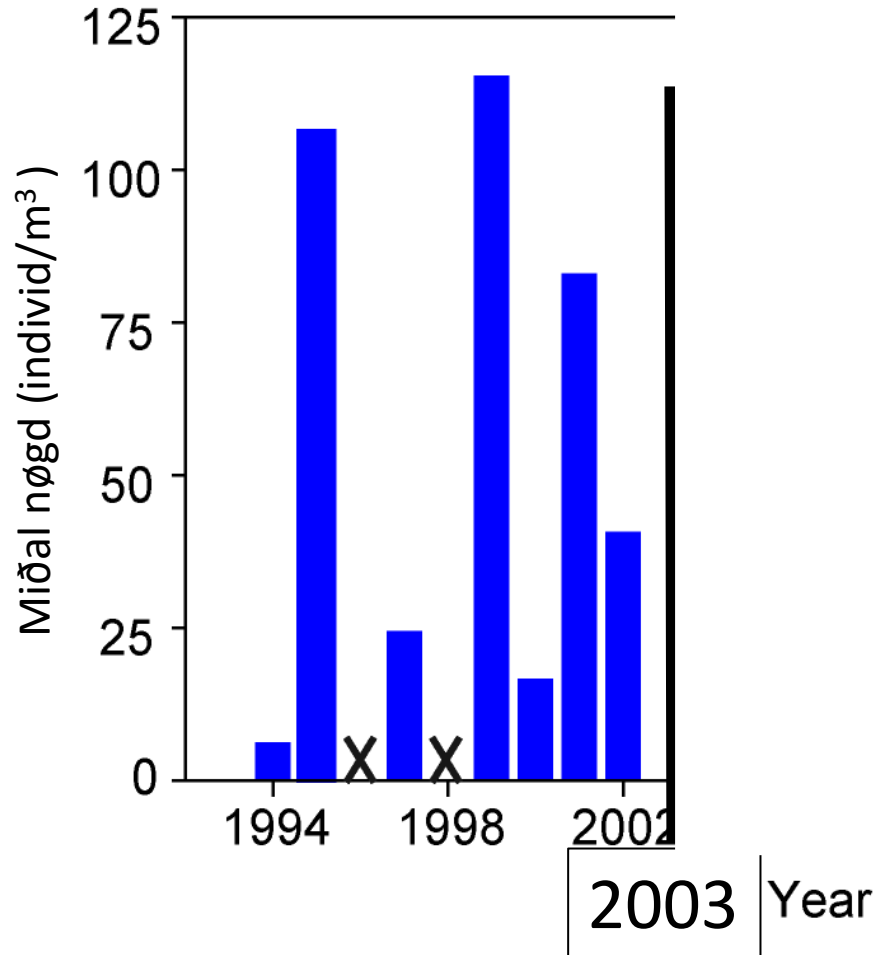
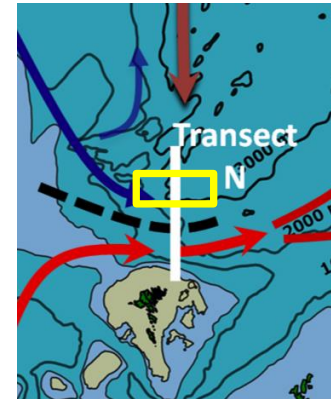


Hvat hendi?



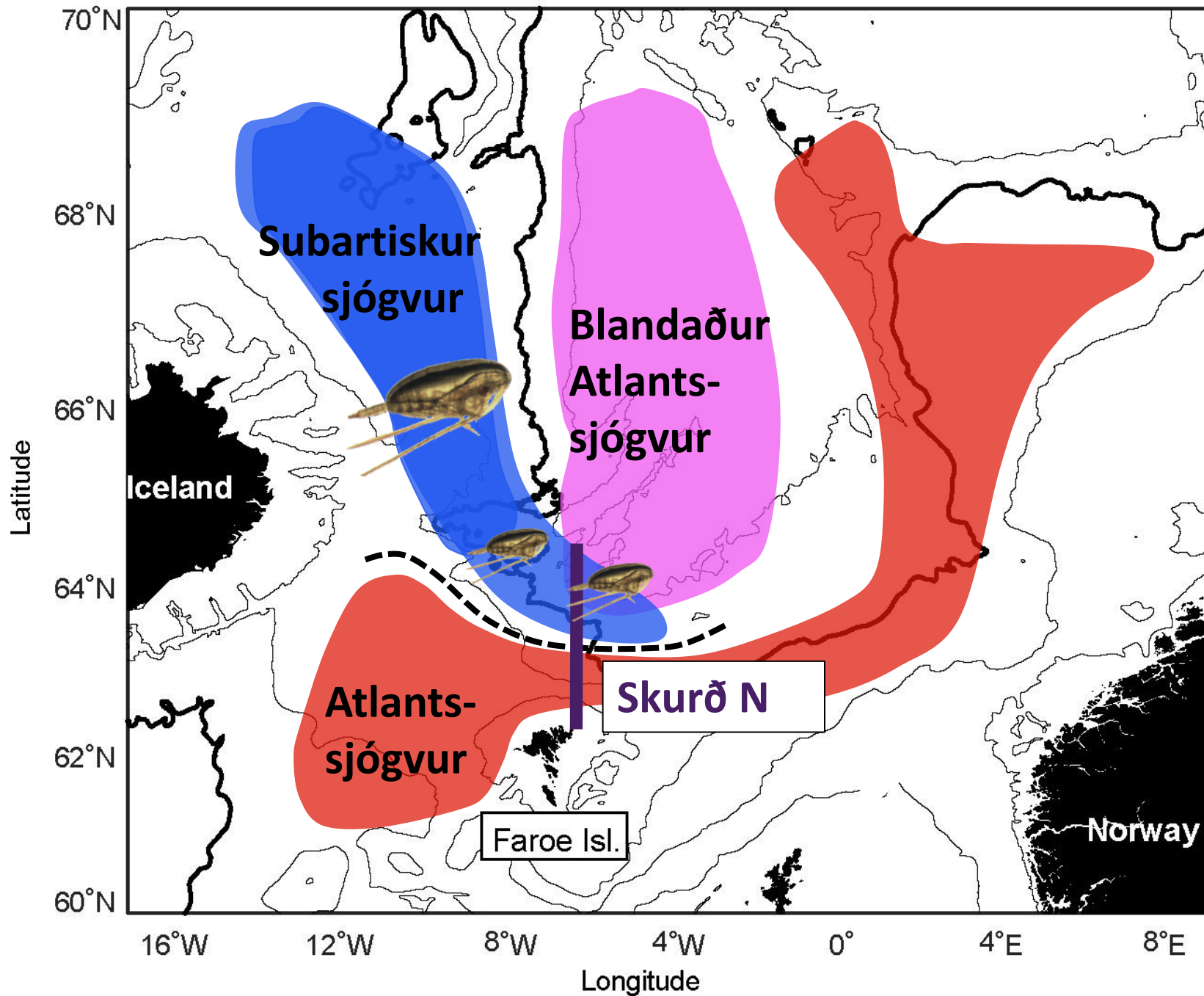


Cal hyp í mai



Hypotesa

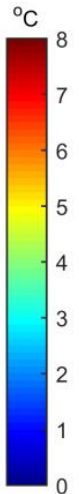
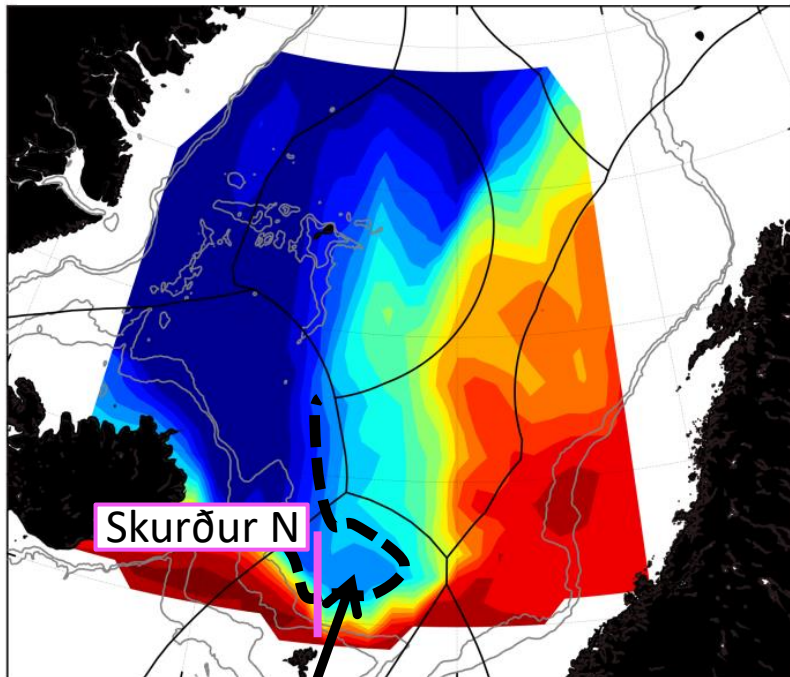
Hvurvu *Cal hyp* and tey stóru *Cal fin*
vegna **eina broyting í subartiska
sjónum?**



Variation in subarctic sea ice

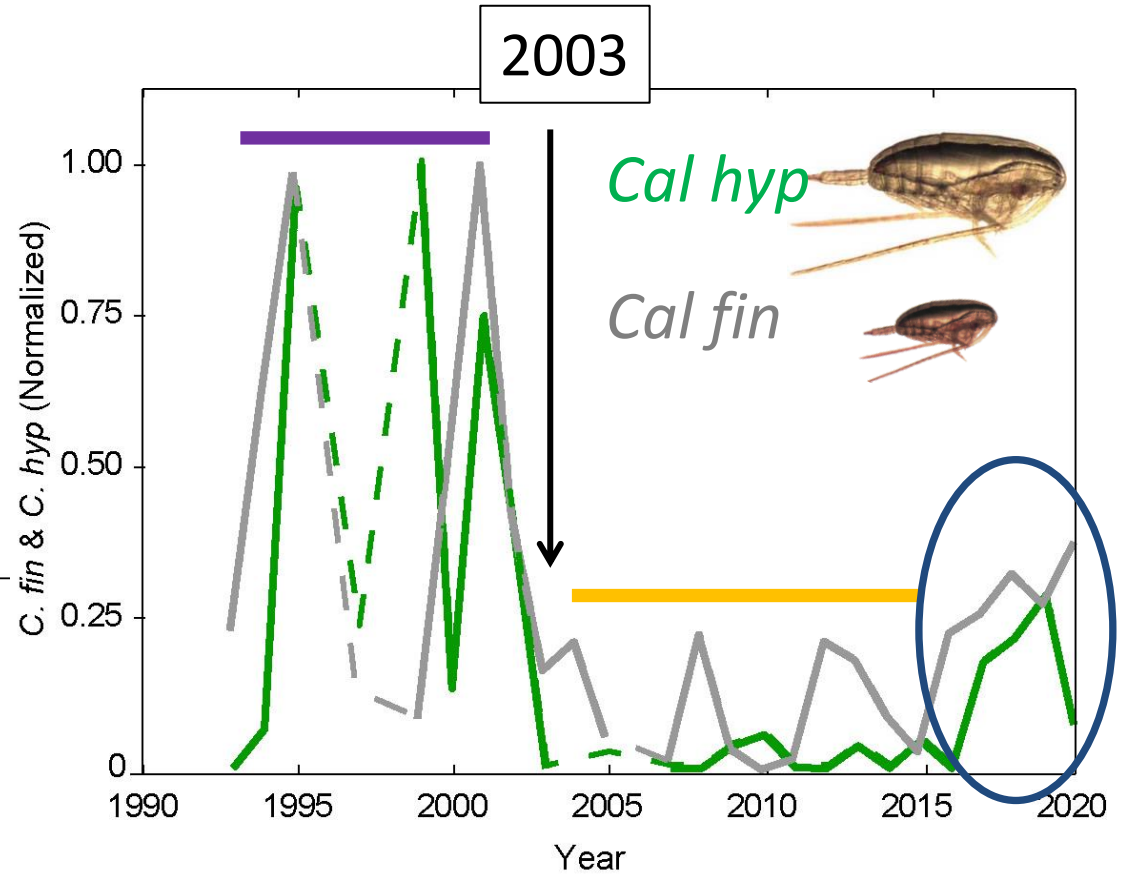
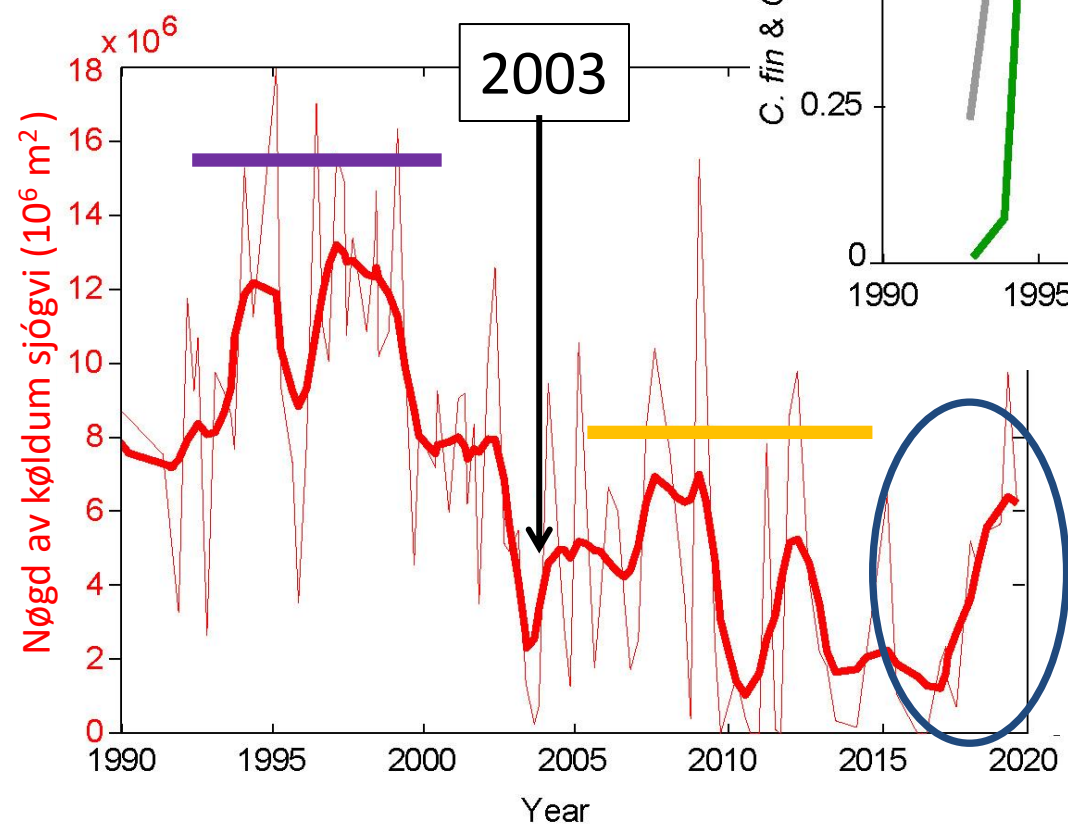
2002

Hiti á 100 m



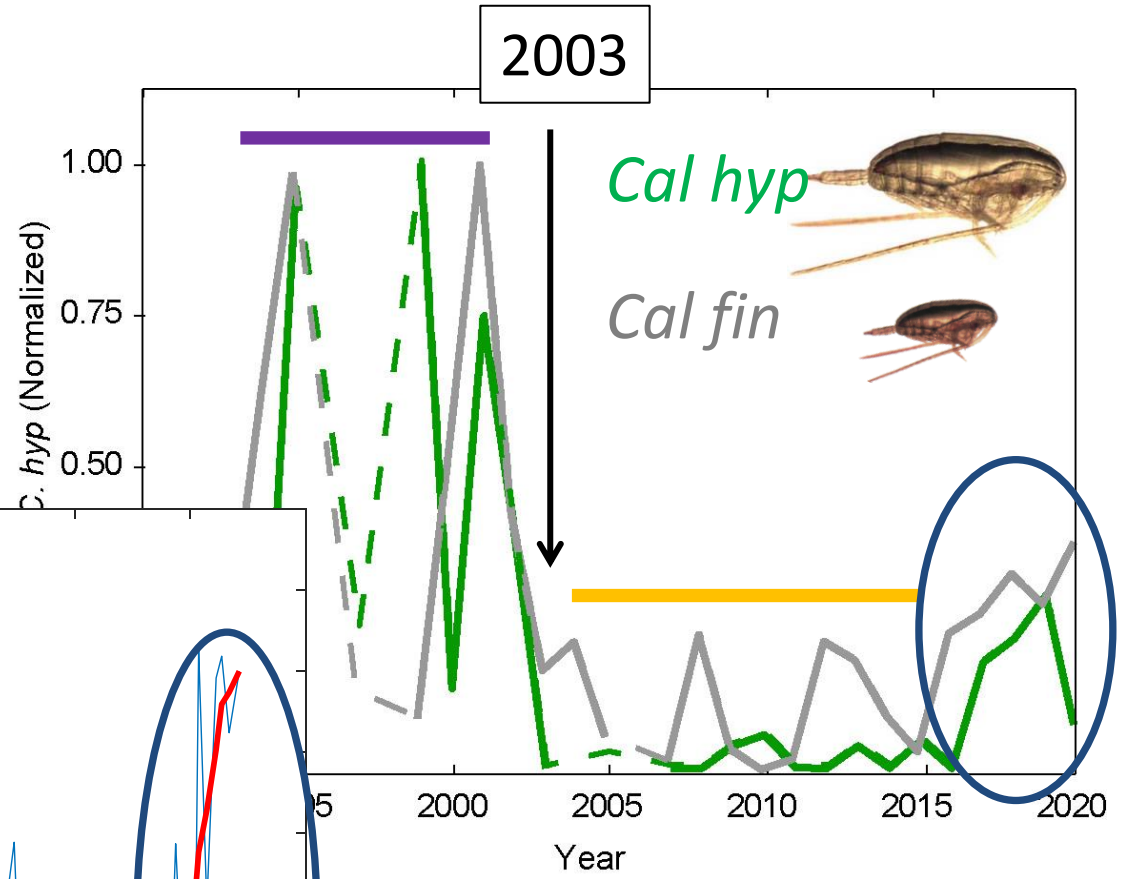
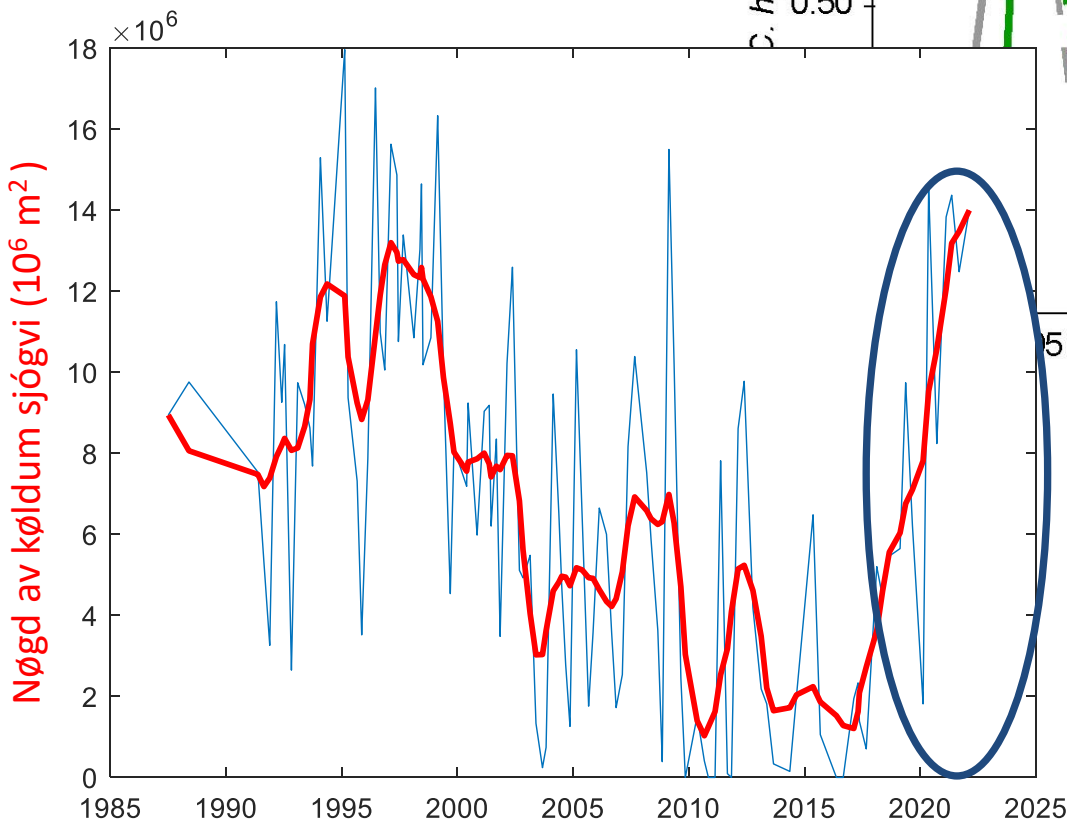
Subartiskur sjógvur

Kaldur sjógvur & reyðæti á Skurði N



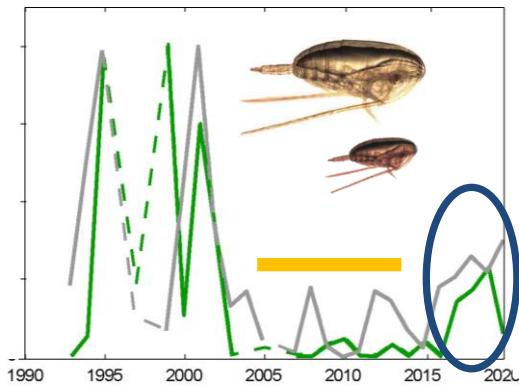
Kaldur sjógvur

Kaldur sjógvur & reyðæti á Skurði N

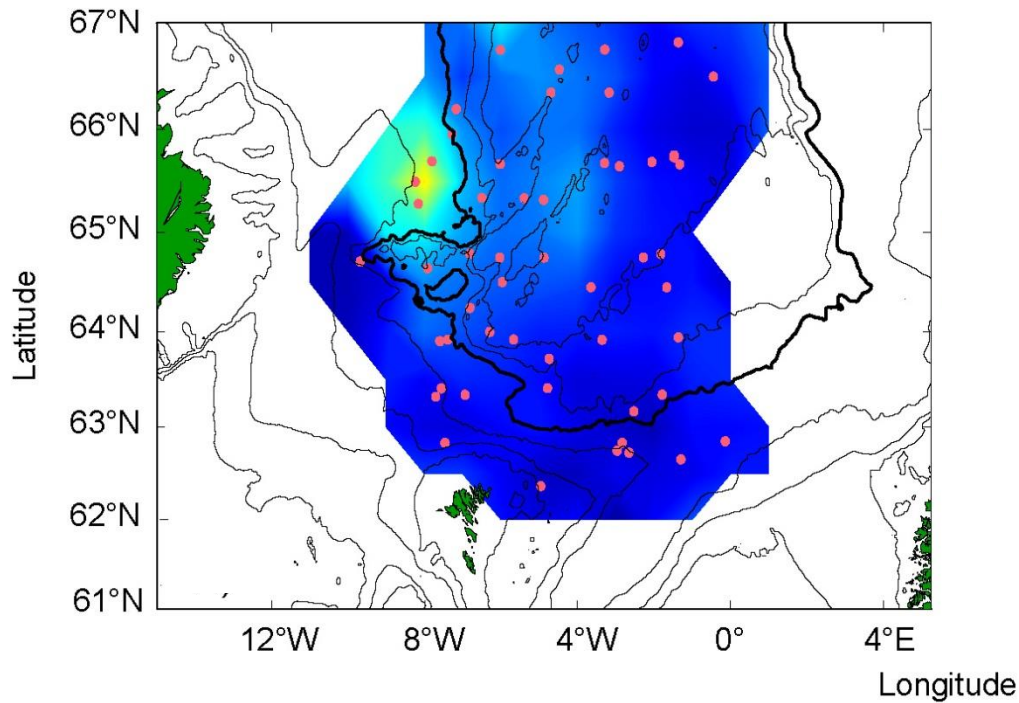


Kaldur sjógvur

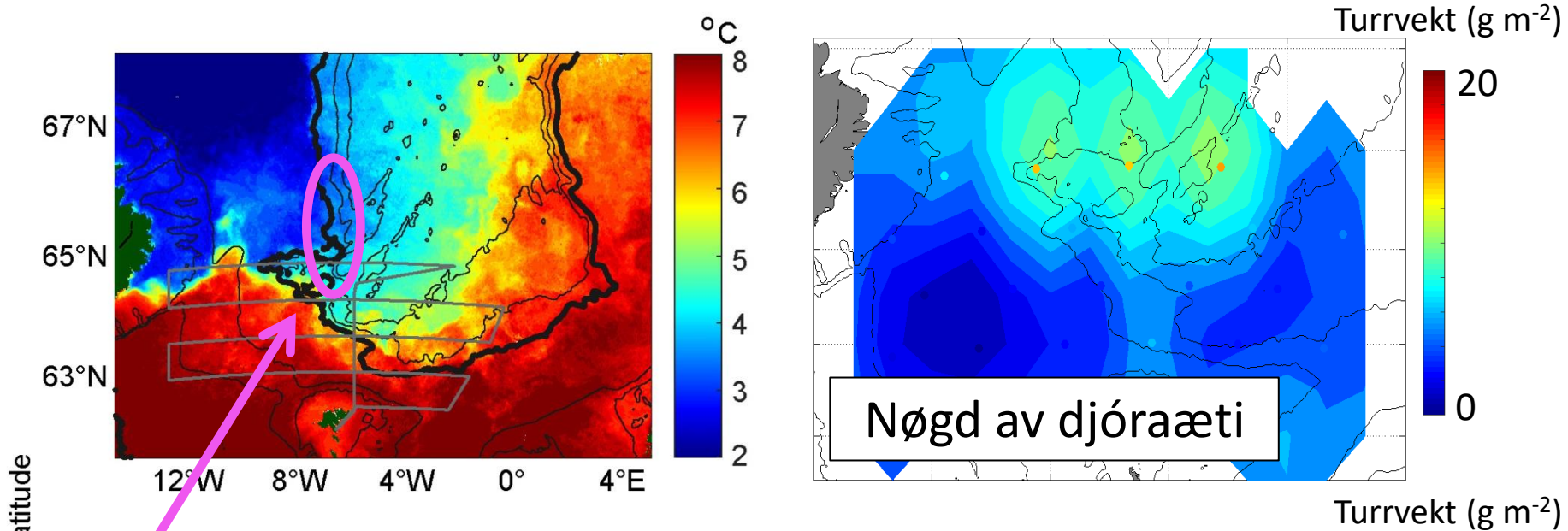
Magafylla hjá sild



2007-2011



Sildatúrur í mai 2020

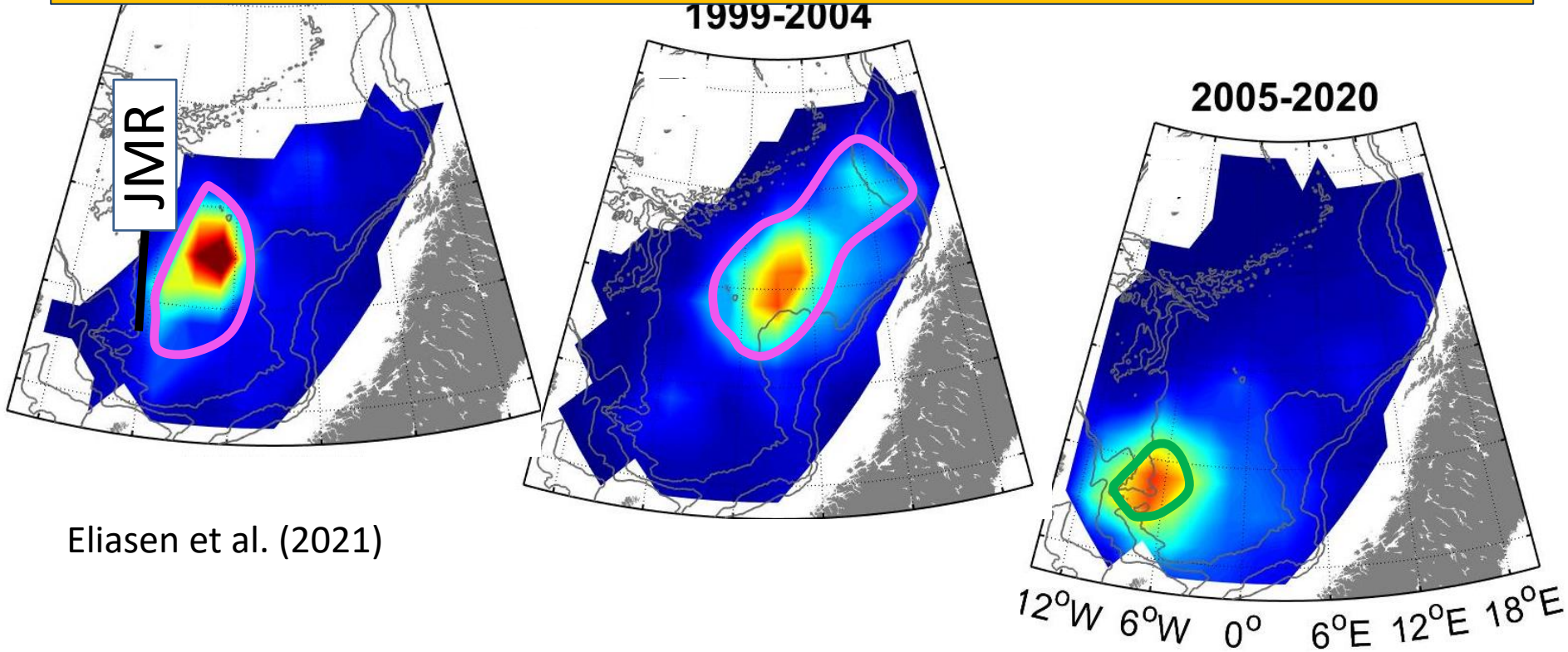


Útbreiðslumiðdepil hjá 8+ ára gomlu sild, 2005-2020

Eliassen et al. (2021)

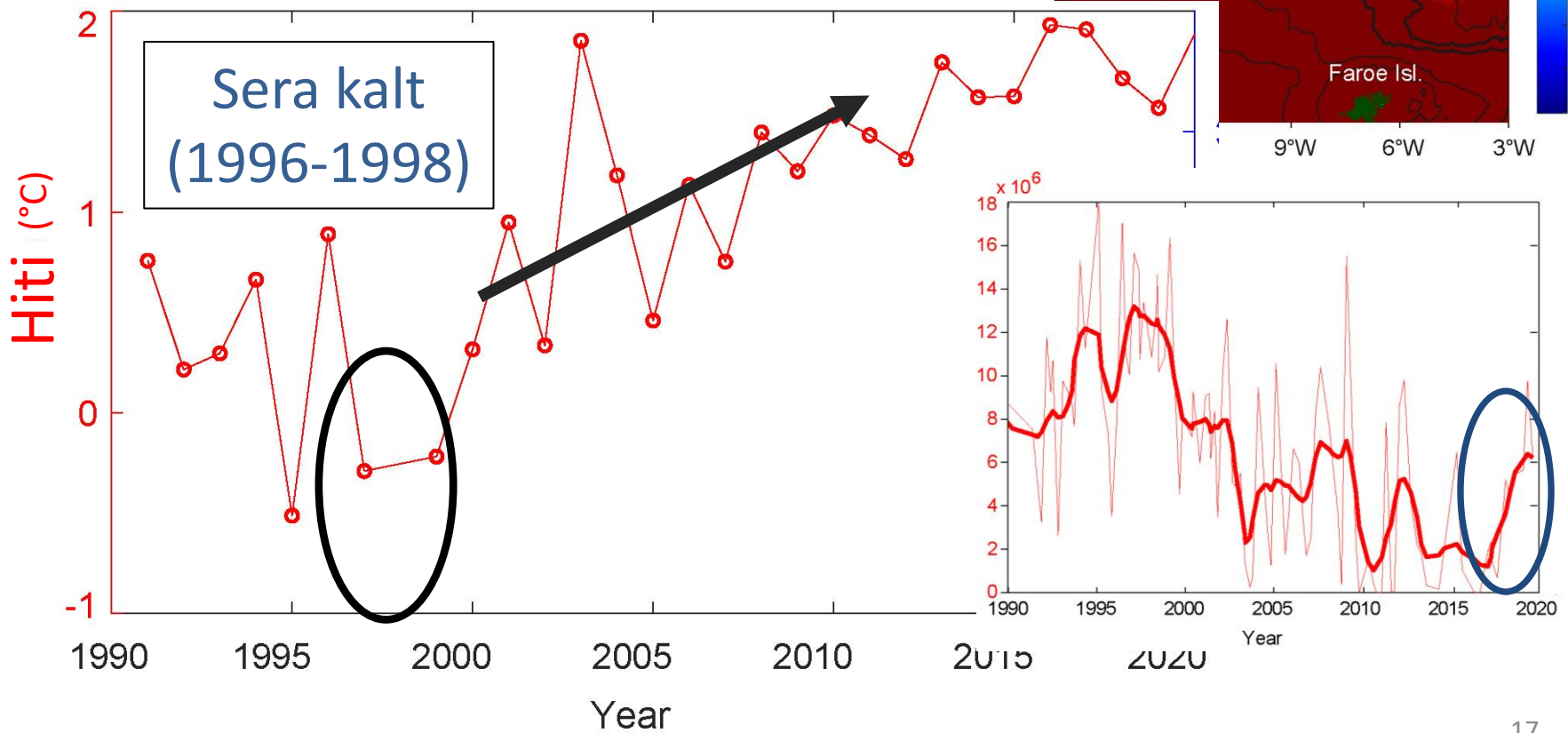
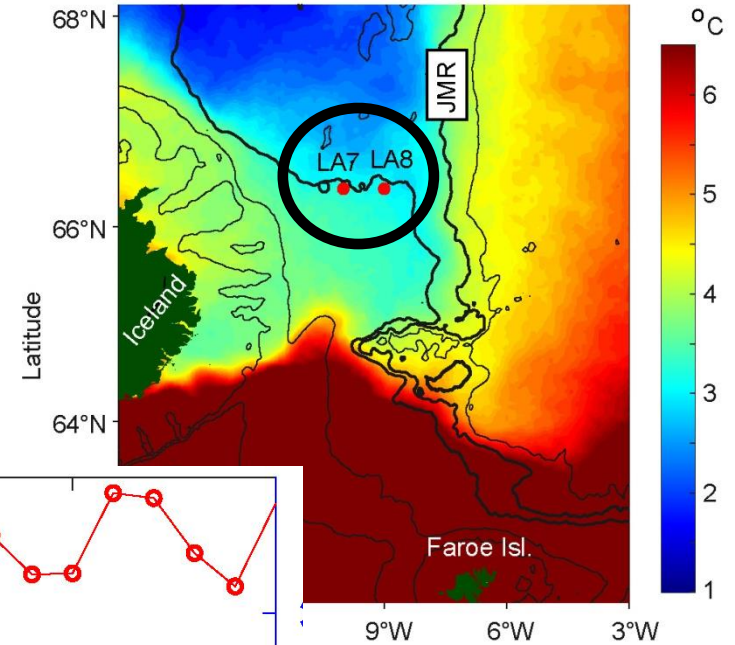
Sildaútbreiðsla í mai (miðal av 8+ ára gomlum)

Hví broytir sildin ferðingarmynstur?



Eliassen et al. (2021)

Hitin í subartiskum sjógvi



Nøgd av djóraæti í mai

Niðurstøða

Vit hava víst á at í mai:

- Broytist ætisamansetingin í mun til nøgd av køldum subartiskum sjógvi
- Stendur sildin savnað á einum øki har mest djóraæti er til staðar
- Nøgd av subartiskum sjógvi, og harvið eisini djóraæti, úr Íslandi tykjast at hava týdning fyri hvar sildin stendur í mai
- Hitin av subartiska sjónum ávirkar eisini sildina